

## SMAGP RABBIT PAB

**Cat.#:** S220948

**Product Name:** Anti-SMAGP Rabbit Polyclonal Antibody

**Synonyms:** hSMAGP

**UNIPROT ID:** Q0VAQ4 (Gene Accession - NP\_001026798 )

**Background:** SMAGP (small transmembrane and glycosylated protein) is a 97 amino acid single-pass type III membrane protein that localizes to the membrane of cytoplasmic vesicles. Existing as a murine-specific protein, SMAGP is thought to play a role in epithelial cell-cell contacts and, via its ability to control cell adhesion, may be involved in tumor formation, as well as overall tumor invasiveness and metastasis. SMAGP is subject to post-translational O-glycosylation which is thought to be modified with sialic acid residues. The gene encoding SMAGP maps to murine chromosome 15.

**Immunogen:** Synthetic peptide of human SMAGP

**Applications:** ELISA, IHC

**Recommended Dilutions:** IHC: 25-100; ELISA: 1000-2000

**Host Species:** Rabbit

**Clonality:** Rabbit Polyclonal

**Isotype:** Immunogen-specific rabbit IgG

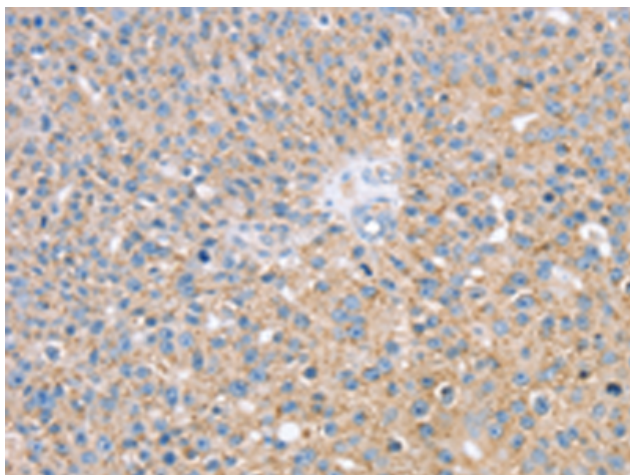
**Purification:** Antigen affinity purification

**Species Reactivity:** Human, Mouse, Rat

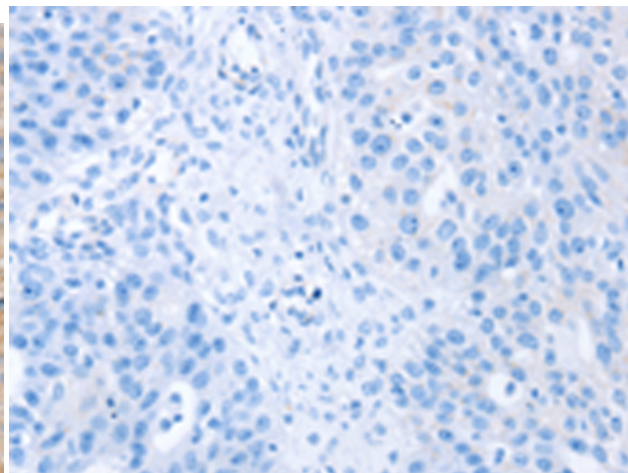
**Constituents:** PBS (without Mg<sup>2+</sup> and Ca<sup>2+</sup>), pH 7.4, 150 mM NaCl, 0.05% Sodium Azide and 40% glycerol

**Research Areas:** Signal Transduction, Cancer

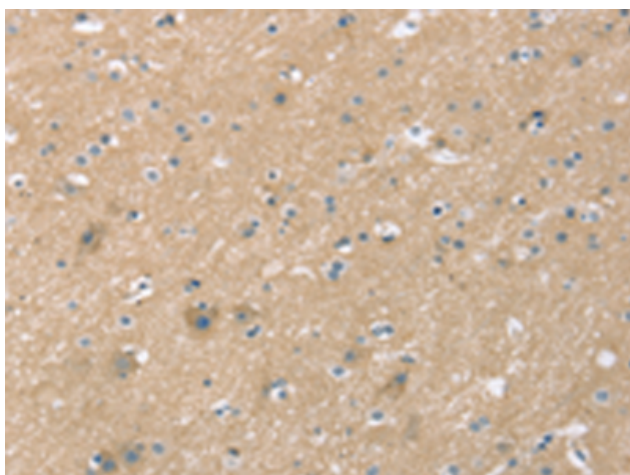
**Storage & Shipping:** Store at -20°C. Avoid repeated freezing and thawing



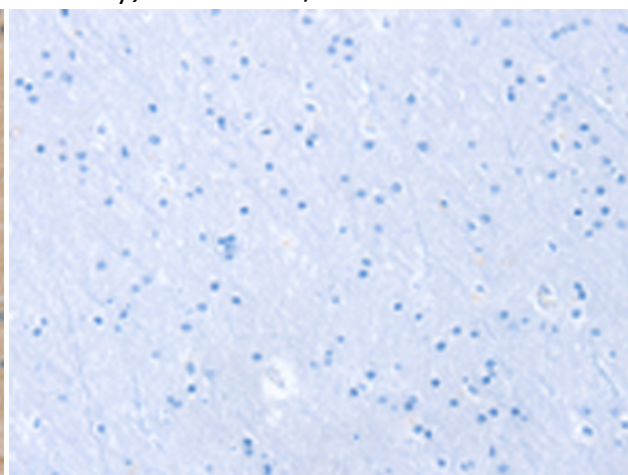
Immunohistochemistry analysis of paraffin embedded Human breast cancer tissue using 220948(SMAGP Antibody) at a dilution of 1/35(Cytoplasm and Cell membrane).



In comparison with the IHC on the left, the same paraffin-embedded Human breast cancer tissue is first treated with the synthetic peptide and then with 220948(Anti-SMAGP Antibody) at dilution 1/35.



The image on the left is immunohistochemistry of paraffin-embedded Human brain tissue using 220948(Anti-SMAGP Antibody) at a dilution of 1/35.



In comparison with the IHC on the left, the same paraffin-embedded Human brain tissue is first treated with synthetic peptide and then with D262270(Anti-SMAGP Antibody) at dilution 1/35.