

SMAD2 RABBIT MAB

Cat.#: N262910

Product Name: Anti-Smad2 Rabbit Monoclonal Antibody

Synonyms: SMAD2; MADH2; MADR2; Mothers against decapentaplegic homolog 2; MAD homolog 2; Mothers against DPP homolog 2; JVI8-1; Mad-related protein 2; hMAD-2; SMAD family member 2; SMAD 2; Smad2; hSMAD2

UNIPROT ID: Q15796

Background: The protein encoded by this gene belongs to the SMAD, a family of proteins similar to the gene products of the Drosophila gene 'mothers against decapentaplegic' (Mad) and the C. elegans gene Sma. SMAD proteins are signal transducers and transcriptional modulators that mediate multiple signaling pathways.

Immunogen: A synthetic peptide of human Smad2

Applications: WB,IHC-F,IHC-P,ICC/IF,IP

Recommended Dilutions: WB: 1/500-1/1000 IHC: 1/50-1/100 IF: 1/50-1/200 IP: 1/20

Host Species: Rabbit

Clonality: Rabbit Monoclonal

Clone ID: R03-3F8

MW: Calculated MW: 52 kDa; Observed MW: 52 kDa

Isotype: IgG

Purification: Affinity Purified

Species Reactivity: Human,Rat,Hamster

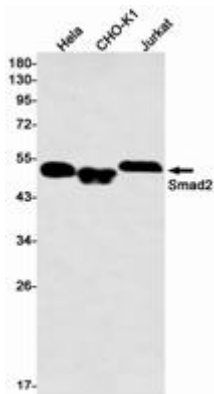
Conjugation: Unconjugated

Modification: Unmodified

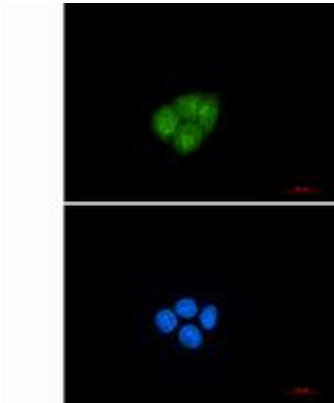
Constituents: PBS (without Mg²⁺ and Ca²⁺), pH 7.3 containing 50% glycerol, 0.5% BSA and 0.02% sodium azide

Research Areas: Signal Transduction

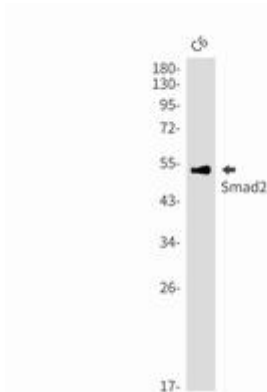
Storage & Shipping: Store at -20°C. Avoid repeated freezing and thawing



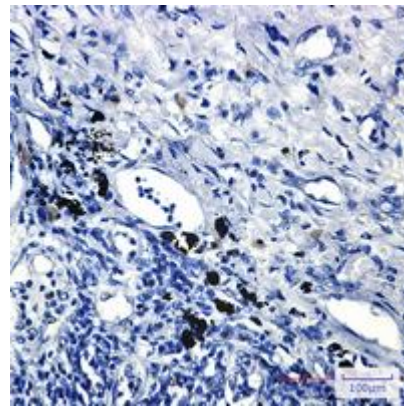
Western blot analysis of Smad2 in HeLa, CHO-K1, Jurkat lysates using Smad2 antibody



Immunocytochemistry analysis of Smad2 (green) in HeLa using Smad2 antibody, and DAPI (blue).



Western blot analysis of Smad2 in C6 lysates using Smad2 antibody.



Immunohistochemistry analysis of paraffin-embedded Human lung cancer using Smad2 antibody. High-pressure and temperature Sodium Citrate pH 6.0 was used for antigen retrieval.