

SMAD2 (6H5) MOUSE MAB

Cat.#: N261087

Product Name: Anti-Smad2 (6H5) Mouse Monoclonal Antibody

Synonyms: SMAD2; MADH2; MADR2; Mothers against decapentaplegic homolog 2; MAD homolog 2; Mothers against DPP homolog 2; JV18-1; Mad-related protein 2; hMAD-2; SMAD family member 2; SMAD 2; Smad2; hSMAD2

UNIPROT ID: Q15796

Background: The protein encoded by this gene belongs to the SMAD, a family of proteins similar to the gene products of the Drosophila gene 'mothers against decapentaplegic' (Mad) and the C. elegans gene Sma. SMAD proteins are signal transducers and transcriptional modulators that mediate multiple signaling pathways.

Immunogen: Purified recombinant human Smad2 protein fragments expressed in E.coli.

Applications: WB, ICC/IF

Recommended Dilutions: WB: 1/500-1/1000 IF: 1/50-1/200

Host Species: Mouse

Clonality: Mouse Monoclonal

Clone ID: 6H5-E3-C11

MW: Calculated MW: 52 kDa; Observed MW: 60 kDa

Isotype: IgG1

Purification: Affinity Purified

Species Reactivity: Human, Mouse

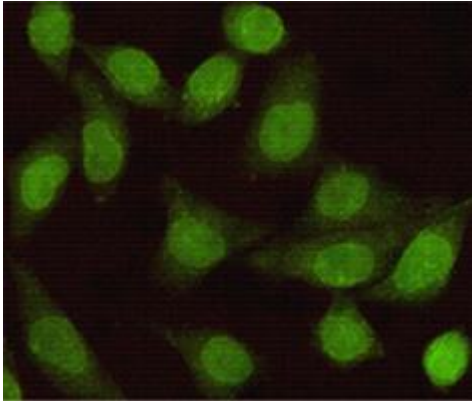
Conjugation: Unconjugated

Modification: Unmodified

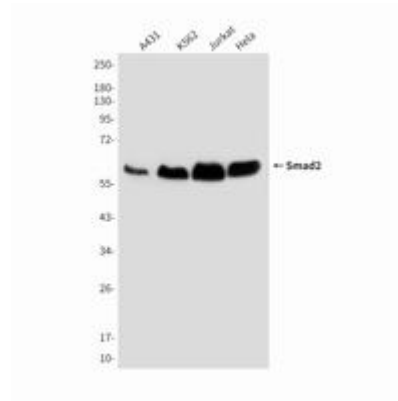
Constituents: PBS (without Mg²⁺ and Ca²⁺), pH 7.3 containing 50% glycerol, 0.5% BSA and 0.02% sodium azide

Research Areas: Signal Transduction

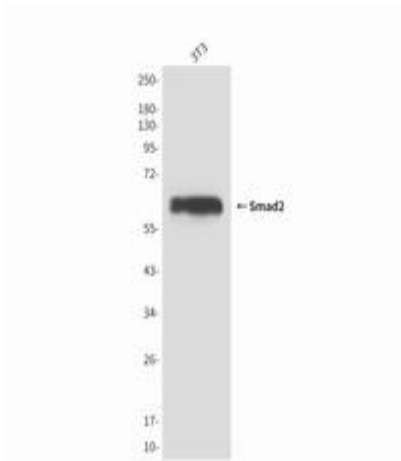
Storage & Shipping: Store at -20°C. Avoid repeated freezing and thawing



Immunocytochemistry analysis of Smad2 (6H5) in HeLa using Smad2 antibody.



Western blot analysis of Smad2 in HeLa, A431, Jurkat and K562 lysates using Smad2 antibody.



Western blot analysis of Smad2 (6H5) in 3T3 lysates using Smad2 antibody.