

SMAC RABBIT MAB

Cat.#: N262909

Product Name: Anti-SMAC Rabbit Monoclonal Antibody

Synonyms: SMAC; DFNA64; DIABLO; SMAC3

UNIPROT ID: Q9NR28

Background: Smac/Diablo is a 21 kDa mammalian mitochondrial protein that functions as a regulatory component during apoptosis. Upon mitochondrial stress, Smac/Diablo is released from mitochondria and competes with caspases for binding of IAPs (inhibitor of apoptosis proteins). The interaction of Smac/Diablo with IAPs relieves the inhibitory effect of the IAPs on caspases.

Immunogen: A synthetic peptide of human Smac/Diablo

Applications: WB,IHC-F,IHC-P,ICC/IF,IP

Recommended Dilutions: WB: 1/500-1/1000 IHC: 1/50-1/100 IF: 1/50-1/200 IP: 1/20

Host Species: Rabbit

Clonality: Rabbit Monoclonal

Clone ID: R08-6A3

MW: Calculated MW: 27 kDa; Observed MW: 21 kDa

Isotype: IgG

Purification: Affinity Purified

Species Reactivity: Human,Mouse,Rat

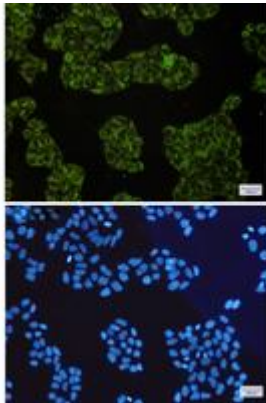
Conjugation: Unconjugated

Modification: Unmodified

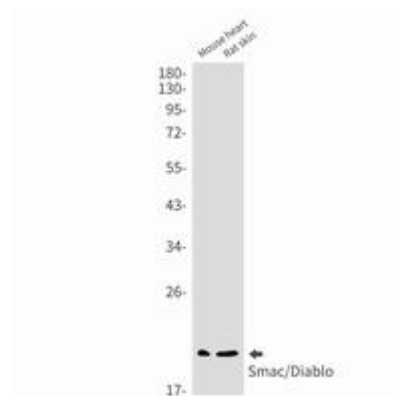
Constituents: PBS (without Mg²⁺ and Ca²⁺), pH 7.3 containing 50% glycerol, 0.5% BSA and 0.02% sodium azide

Research Areas: apoptosis - Caspase family

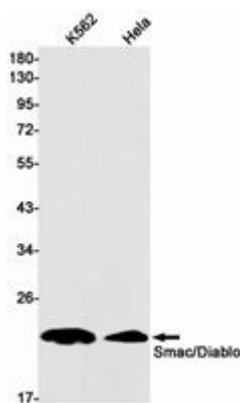
Storage & Shipping: Store at -20°C. Avoid repeated freezing and thawing



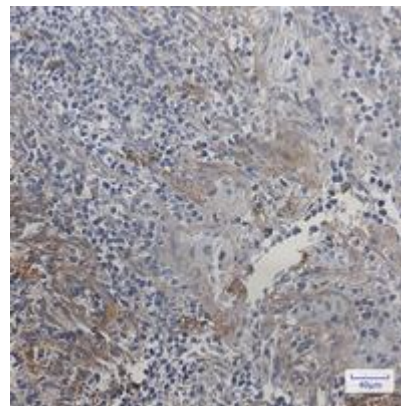
Immunocytochemistry analysis of Smac/Diablo (green) in Hela using Smac/Diablo antibody, and DAPI (blue)



Western blot analysis of Smac/Diablo in mouse heart, rat skin lysates using SMAC antibody.



Western blot analysis of Smac/Diablo in K562, Hela lysates using Smac/Diablo antibody.



Immunohistochemistry analysis of paraffin-embedded Human tonsil using Smac/Diablo antibody. High-pressure and temperature Sodium Citrate pH 6.0 was used for antigen retrieval.