

## SLP2 RABBIT MAB

**Cat.#:** N261617

**Product Name:** Anti-SLP2 Rabbit Monoclonal Antibody

**Synonyms:** stomatin like 2; SLP-2; HSPC108

**UNIPROT ID:** Q9UJZ1

**Background:** Mitochondrial protein that probably regulates the biogenesis and the activity of mitochondria.

**Immunogen:** A synthetic peptide of human STOML2

**Applications:** WB, ICC/IF, IP

**Recommended Dilutions:** WB: 1/500-1/1000 IF: 1/50-1/200 IP: 1/20

**Host Species:** Rabbit

**Clonality:** Rabbit Monoclonal

**Clone ID:** R09-6C3

**MW:** Calculated MW: 39 kDa; Observed MW: 39 kDa

**Isotype:** IgG

**Purification:** Affinity Purified

**Species Reactivity:** Human, Mouse, Rat

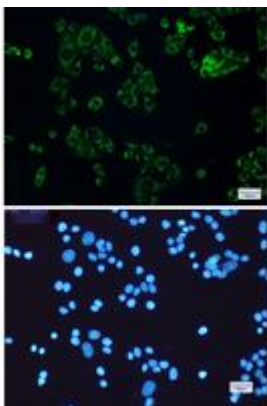
**Conjugation:** Unconjugated

**Modification:** Unmodified

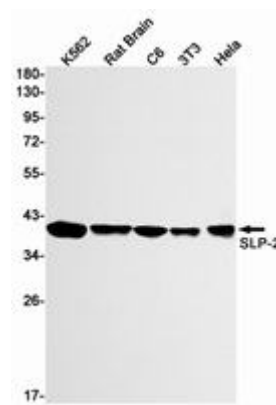
**Constituents:** PBS (without Mg<sup>2+</sup> and Ca<sup>2+</sup>), pH 7.3 containing 50% glycerol, 0.5% BSA and 0.02% sodium azide

**Research Areas:** Cancer

**Storage & Shipping:** Store at -20°C. Avoid repeated freezing and thawing



Immunocytochemistry analysis of SLP2 (green) in HeLa using SLP2 antibody, and DAPI (blue)



Western blot analysis of SLP2 in K562, rat Brain, C6, 3T3, HeLa lysates using SLP2 antibody.



# Product Description

Pioneering GTPase and Oncogene Product Development since 2010

---