

SLIT2 RABBIT PAB

Cat.#: N225873

Product Name: Anti-Slit2 Rabbit pAb

Synonyms: slit guidance ligand 2; SLIL3; Slit-2

UNIPROT ID: O94813

Background: Thought to act as molecular guidance cue in cellular migration, and function appears to be mediated by interaction with roundabout homolog receptors.

Immunogen: A synthesized peptide derived from human Slit2

Applications: WB,IHC-P,IP

Recommended Dilutions: WB: 1/500-1/1000 IHC: 1/50-1/100 IP: 1/20

Host Species: Rabbit

Clonality: Rabbit Polyclonal

Clone ID: -

MW: Calculated MW: 170 kDa; Observed MW: 58 kDa

Isotype: IgG

Purification: Affinity Chromatography

Species Reactivity: Human,Mouse,Rat

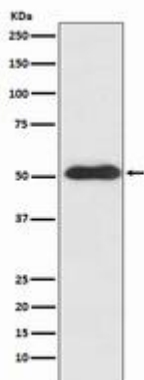
Conjugation: Unconjugated

Modification: Unmodified

Constituents: PBS (without Mg²⁺ and Ca²⁺), pH 7.3 containing 50% glycerol, 0.5% BSA and 0.02% sodium azide

Research Areas: Neuroscience

Storage & Shipping: Store at -20°C. Avoid repeated freezing and thawing



Western blot analysis of Slit2 in SH-SY5Y lysates using Slit2 antibody.



Product Description

Pioneering GTPase and Oncogene Product Development since 2010
