

## SLC9A7 RABBIT PAB

**Cat.#:** S220205

**Product Name:** Anti-SLC9A7 Rabbit Polyclonal Antibody

**Synonyms:** NHE7; NHE-7; SLC9A6

**UNIPROT ID:** Q96T83 (Gene Accession - NP\_115980.1)

**Background:** This gene encodes a sodium and potassium/ proton antiporter that is a member of the solute carrier family 9 protein family. The encoded protein is primarily localized to the trans-Golgi network and is involved in maintaining pH homeostasis in organelles along the secretory and endocytic pathways. This protein may enhance cell growth of certain breast tumors. This gene is part of a gene cluster on chromosome Xp11.23. A pseudogene of this gene is found on chromosome 12. Alternate splicing results in multiple transcript variants.

**Immunogen:** Synthetic peptide of human SLC9A7

**Applications:** ELISA, IHC

**Recommended Dilutions:** IHC: 50-200; ELISA: 2000-5000

**Host Species:** Rabbit

**Clonality:** Rabbit Polyclonal

**Isotype:** Immunogen-specific rabbit IgG

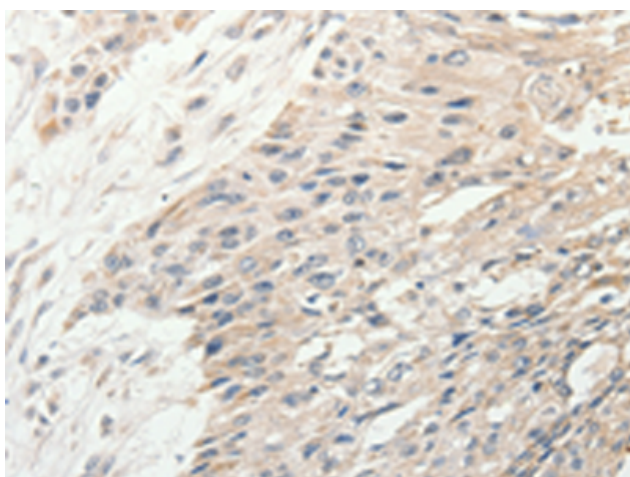
**Purification:** Antigen affinity purification

**Species Reactivity:** Human, Mouse

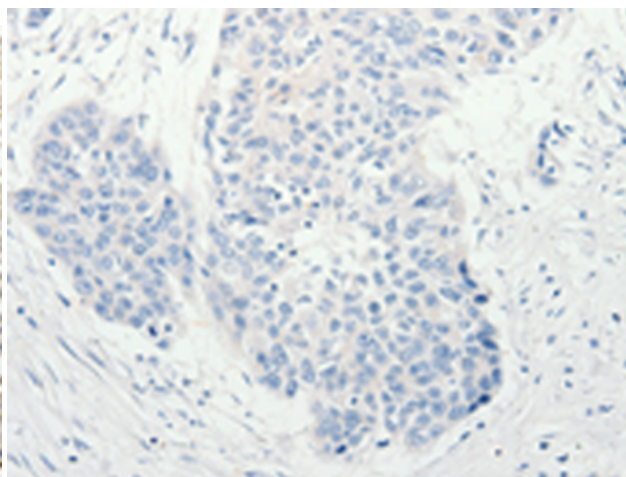
**Constituents:** PBS (without Mg<sup>2+</sup> and Ca<sup>2+</sup>), pH 7.4, 150 mM NaCl, 0.05% Sodium Azide and 40% glycerol

**Research Areas:** Metabolism

**Storage & Shipping:** Store at -20°C. Avoid repeated freezing and thawing



Immunohistochemistry analysis of paraffin embedded Human esophagus cancer tissue using 220205(SLC9A7 Antibody) at a dilution of 1/50(Cytoplasm).



In comparison with the IHC on the left, the same paraffin-embedded Human esophagus cancer tissue is first treated with the synthetic peptide and then with 220205(Anti-SLC9A7 Antibody) at dilution 1/50.