

## SLC9A3R2 RABBIT PAB

**Cat.#:** S219988

**Product Name:** Anti-SLC9A3R2 Rabbit Polyclonal Antibody

**Synonyms:** SIP1; OCTS2; SIP-1; TKA-1; E3KARP; NHERF2; NHE3RF2; NHERF-2

**UNIPROT ID:** Q15599 (Gene Accession - NP\_001123484.1)

**Background:** This gene encodes a member of the NHERF family of PDZ scaffolding proteins. These proteins mediate many cellular processes by binding to and regulating the membrane expression and protein-protein interactions of membrane receptors and transport proteins. The encoded protein plays a role in intestinal sodium absorption by regulating the activity of the sodium/hydrogen exchanger 3, and may also regulate the cystic fibrosis transmembrane regulator (CFTR) ion channel. Alternatively spliced transcript variants encoding multiple isoforms have been observed for this gene.

**Immunogen:** Synthetic peptide of human SLC9A3R2

**Applications:** ELISA, IHC

**Recommended Dilutions:** IHC: 50-200; ELISA: 2000-5000

**Host Species:** Rabbit

**Clonality:** Rabbit Polyclonal

**Isotype:** Immunogen-specific rabbit IgG

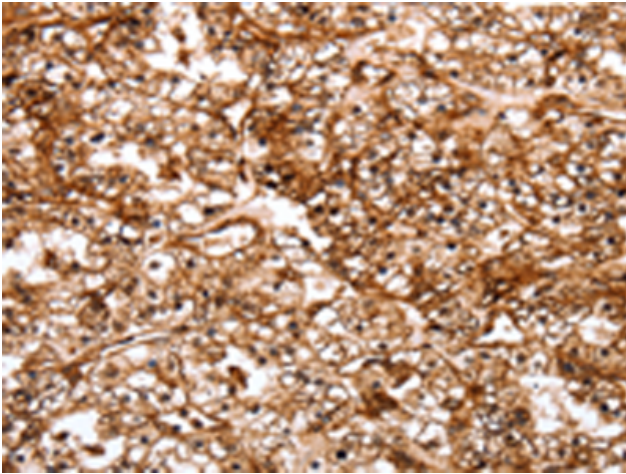
**Purification:** Antigen affinity purification

**Species Reactivity:** Human, Mouse, Rat

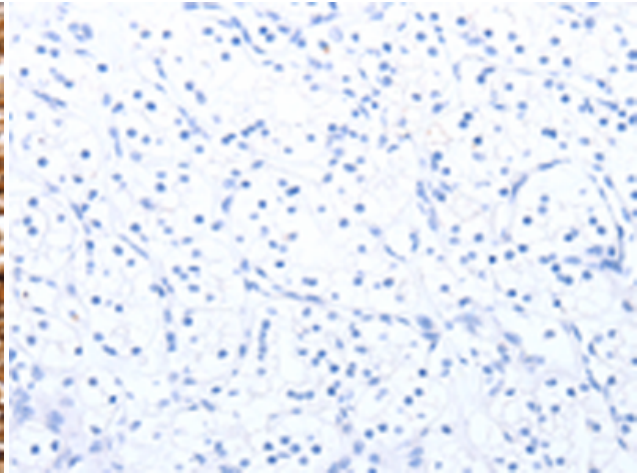
**Constituents:** PBS (without Mg<sup>2+</sup> and Ca<sup>2+</sup>), pH 7.4, 150 mM NaCl, 0.05% Sodium Azide and 40% glycerol

**Research Areas:** Metabolism, Signal Transduction

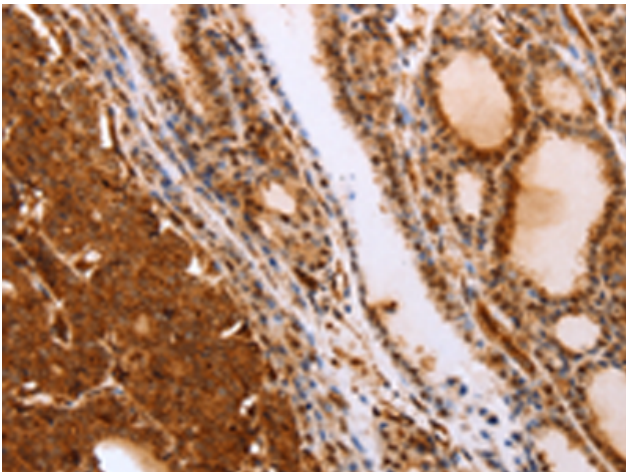
**Storage & Shipping:** Store at -20°C. Avoid repeated freezing and thawing



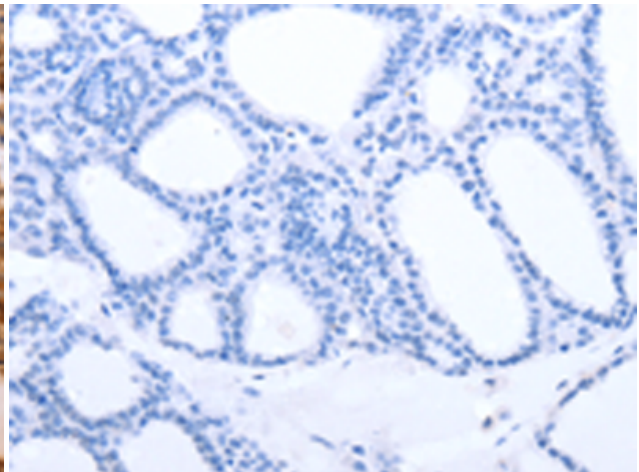
Immunohistochemistry analysis of paraffin embedded Human renal cancer tissue using 219988 (SLC9A3R2 Antibody) at a dilution of 1/40 (Cytoplasm, Endomembrane system, Peripheral membrane protein).



In comparison with the IHC on the left, the same paraffin-embedded Human renal cancer tissue is first treated with the synthetic peptide and then with 219988 (Anti-SLC9A3R2 Antibody) at dilution 1/40.



The image on the left is immunohistochemistry of paraffin-embedded Human thyroid cancer tissue using 219988 (Anti-SLC9A3R2 Antibody) at a dilution of 1/40.



In comparison with the IHC on the left, the same paraffin-embedded Human thyroid cancer tissue is first treated with synthetic peptide and then with D260737 (Anti-SLC9A3R2 Antibody) at dilution 1/40.