

## SLC8B1 RABBIT PAB

**Cat.#:** S220923

**Product Name:** Anti-SLC8B1 Rabbit Polyclonal Antibody

**Synonyms:** NCLX; NCKX6; SLC24A6

**UNIPROT ID:** Q6J4K2 (Gene Accession - NP\_079235 )

**Background:** SLC24A6 belongs to a family of potassium-dependent sodium/calcium exchangers that maintain cellular calcium homeostasis through the electrogenic countertransport of 4 sodium ions for 1 calcium ion and 1 potassium ion (Cai and Lytton, 2004 [PubMed 14625281]).[supplied by OMIM, Mar 2008]

**Immunogen:** Synthetic peptide of human SLC8B1

**Applications:** ELISA, IHC

**Recommended Dilutions:** IHC: 50-200; ELISA: 1000-2000

**Host Species:** Rabbit

**Clonality:** Rabbit Polyclonal

**Isotype:** Immunogen-specific rabbit IgG

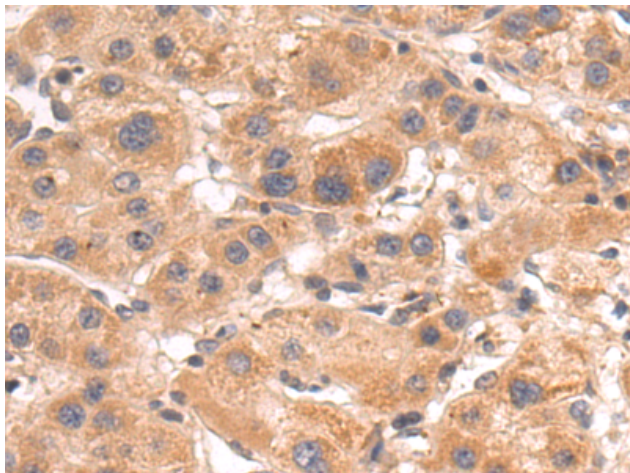
**Purification:** Antigen affinity purification

**Species Reactivity:** Human, Mouse, Rat

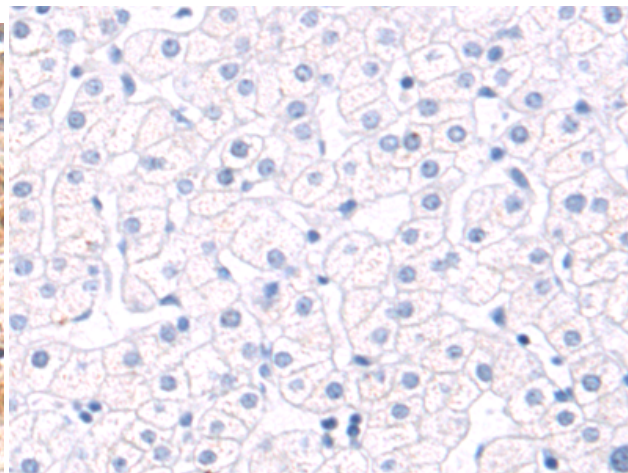
**Constituents:** PBS (without Mg<sup>2+</sup> and Ca<sup>2+</sup>), pH 7.4, 150 mM NaCl, 0.05% Sodium Azide and 40% glycerol

**Research Areas:** Metabolism

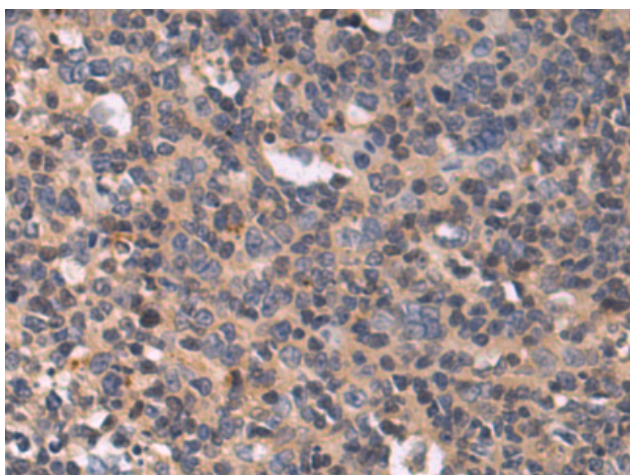
**Storage & Shipping:** Store at -20°C. Avoid repeated freezing and thawing



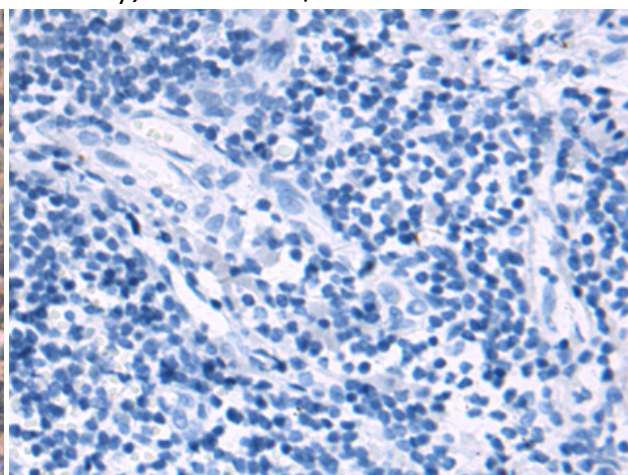
Immunohistochemistry analysis of paraffin embedded Human liver cancer tissue using 220923(SLC8B1 Antibody) at a dilution of 1/50(Cytoplasm).



In comparison with the IHC on the left, the same paraffin-embedded Human liver cancer tissue is first treated with the synthetic peptide and then with 220923(Anti-SLC8B1 Antibody) at dilution 1/50.



The image on the left is immunohistochemistry of paraffin-embedded Human tonsil tissue using 220923(Anti-SLC8B1 Antibody) at a dilution of 1/50.



In comparison with the IHC on the left, the same paraffin-embedded Human tonsil tissue is first treated with synthetic peptide and then with D262221(Anti-SLC8B1 Antibody) at dilution 1/50.