

## SLC7A1 RABBIT PAB

**Cat.#:** S215441

**Product Name:** Anti-SLC7A1 Rabbit Polyclonal Antibody

**Synonyms:** ERR; ATRC1; CAT-1; HCAT1; REC1L

**UNIPROT ID:** P30825 (Gene Accession - NP\_003036 )

**Background:** High-affinity, low capacity permease involved in the transport of the cationic amino acids (arginine, lysine and ornithine) in non-hepatic tissues. May also function as an ecotropic retroviral leukemia receptor.

**Immunogen:** Synthetic peptide of human SLC7A1

**Applications:** ELISA, IHC

**Recommended Dilutions:** IHC: 25-100; ELISA: 5000-10000

**Host Species:** Rabbit

**Clonality:** Rabbit Polyclonal

**Isotype:** Immunogen-specific rabbit IgG

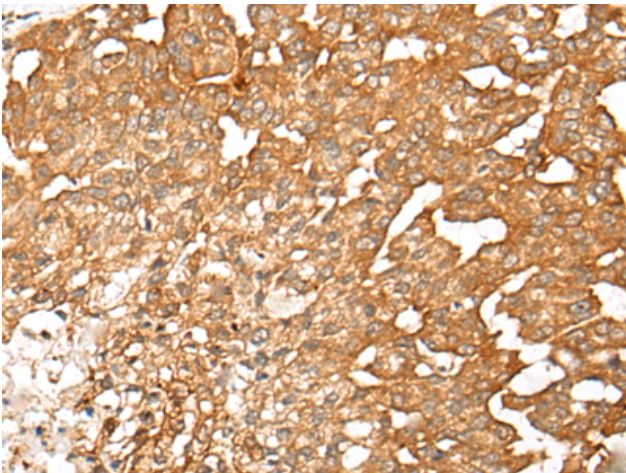
**Purification:** Antigen affinity purification

**Species Reactivity:** Human

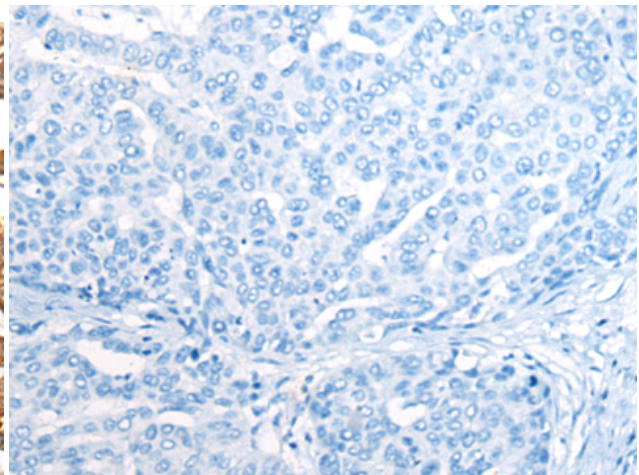
**Constituents:** PBS (without Mg<sup>2+</sup> and Ca<sup>2+</sup>), pH 7.4, 150 mM NaCl, 0.05% Sodium Azide and 40% glycerol

**Research Areas:** Metabolism, Neuroscience

**Storage & Shipping:** Store at -20°C. Avoid repeated freezing and thawing



Immunohistochemistry analysis of paraffin embedded Human liver cancer tissue using 215441(SLC7A1 Antibody) at a dilution of 1/25(Cell membrane).



In comparison with the IHC on the left, the same paraffin-embedded Human liver cancer tissue is first treated with the synthetic peptide and then with 215441(Anti-SLC7A1 Antibody) at dilution 1/25.