

SLC5A5 RABBIT PAB

Cat.#: S220142

Product Name: Anti-SLC5A5 Rabbit Polyclonal Antibody

Synonyms: NIS, TDHI

UNIPROT ID: Q92911 (Gene Accession - NP_000444)

Background: This gene encodes a member of the sodium glucose cotransporter family. The encoded protein is responsible for the uptake of iodine in tissues such as the thyroid and lactating breast tissue. The iodine taken up by the thyroid is incorporated into the metabolic regulators triiodothyronine (T3) and tetraiodothyronine (T4). Mutations in this gene are associated with thyroid dysmorphogenesis 1.

Immunogen: Synthetic peptide of human SLC5A5

Applications: ELISA, WB, IHC

Recommended Dilutions: IHC: 15-50;WB: 500-2000;ELISA: 1000-2000

Host Species: Rabbit

Clonality: Rabbit Polyclonal

Isotype: Immunogen-specific rabbit IgG

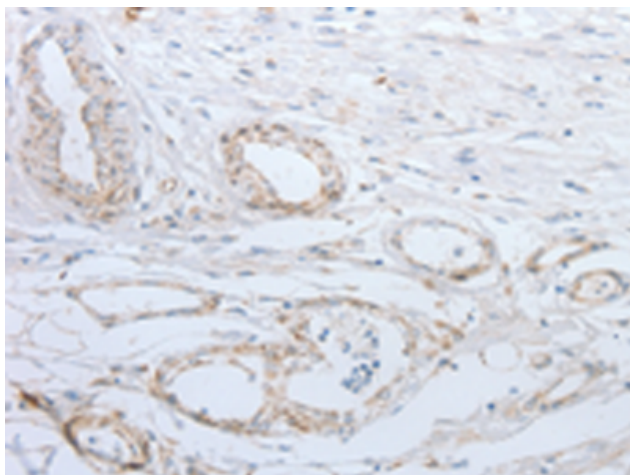
Purification: Antigen affinity purification

Species Reactivity: Human

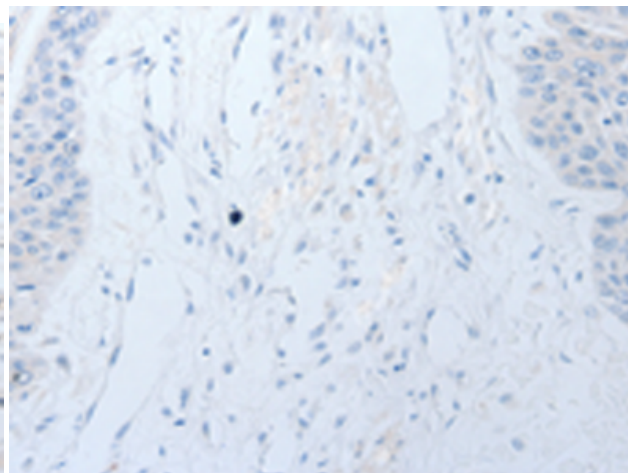
Constituents: PBS (without Mg²⁺ and Ca²⁺), pH 7.4, 150 mM NaCl, 0.05% Sodium Azide and 40% glycerol

Research Areas: Metabolism, Cancer

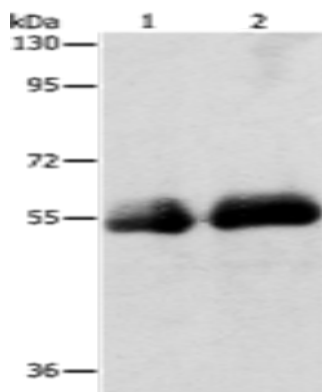
Storage & Shipping: Store at -20°C. Avoid repeated freezing and thawing



Immunohistochemistry analysis of paraffin embedded Human esophagus cancer tissue using 220142 (SLC5A5 Antibody) at a dilution of 1/25 (Cytoplasm).



In comparison with the IHC on the left, the same paraffin-embedded Human esophagus cancer tissue is first treated with the synthetic peptide and then with 220142 (Anti-SLC5A5 Antibody) at dilution 1/25.



Gel: 8% SDS-PAGE, Lysate: 40 μ g;
Lane 1-2: Human colon tissue, Human ovarian cancer tissue;
Primary antibody: 220142 (SLC5A5 Antibody) at dilution 1/400;
Secondary antibody: Goat anti rabbit IgG at 1/8000 dilution;
Exposure time: 2 seconds