

SLC5A3 RABBIT PAB

Cat.#: S220936

Product Name: Anti-SLC5A3 Rabbit Polyclonal Antibody

Synonyms: BCW2; SMIT; SMIT1; SMIT2

UNIPROT ID: P53794 (Gene Accession - NP_008864)

Background: Prevents intracellular accumulation of high concentrations of myo-inositol (an osmolyte) that result in impairment of cellular function.

Immunogen: Synthetic peptide of human SLC5A3

Applications: ELISA, IHC

Recommended Dilutions: IHC: 25-100; ELISA: 5000-10000

Host Species: Rabbit

Clonality: Rabbit Polyclonal

Isotype: Immunogen-specific rabbit IgG

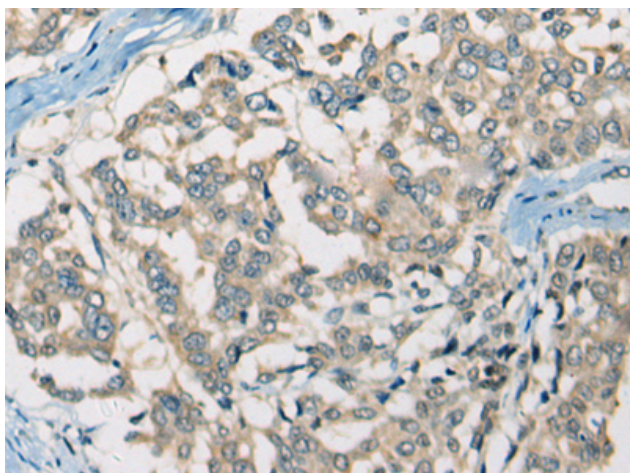
Purification: Antigen affinity purification

Species Reactivity: Human, Mouse

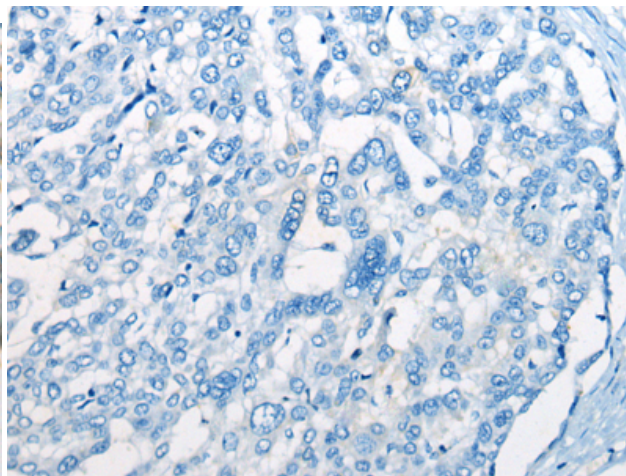
Constituents: PBS (without Mg²⁺ and Ca²⁺), pH 7.4, 150 mM NaCl, 0.05% Sodium Azide and 40% glycerol

Research Areas: Metabolism, Neuroscience

Storage & Shipping: Store at -20°C. Avoid repeated freezing and thawing



Immunohistochemistry analysis of paraffin embedded Human liver cancer tissue using 220936(SLC5A3 Antibody) at a dilution of 1/25(Cell membrane).



In comparison with the IHC on the left, the same paraffin-embedded Human liver cancer tissue is first treated with the synthetic peptide and then with 220936(Anti-SLC5A3 Antibody) at dilution 1/25.