

SLC4A4 RABBIT PAB

Cat.#: S216780

Product Name: Anti-SLC4A4 Rabbit Polyclonal Antibody

Synonyms: KNBC; NBC1; NBC2; pNBC; HNBC1; hhNMC; SLC4A5; NBCe1-A

UNIPROT ID: Q9Y6R1 (Gene Accession - BC030977)

Background: This gene encodes a sodium bicarbonate cotransporter (NBC) involved in the regulation of bicarbonate secretion and absorption and intracellular pH. Mutations in this gene are associated with proximal renal tubular acidosis. Multiple transcript variants encoding different isoforms have been found for this gene. Sodium bicarbonate cotransporters (NBCs) mediate the coupled movement of sodium and bicarbonate ions across the plasma membrane of many cells. This is an electrogenic process with an apparent stoichiometry of 3 bicarbonate ions per sodium ion. Sodium bicarbonate cotransport is involved in bicarbonate secretion/absorption and intracellular pH regulation. Romero and Boron (1999) reviewed NBCs. Soleimani and Burnham (2000) reviewed NBCs and their regulation in physiologic and pathophysiologic states.

Immunogen: Fusion protein of human SLC4A4

Applications: ELISA, IHC

Recommended Dilutions: IHC: 50–200; ELISA: 2000–5000

Host Species: Rabbit

Clonality: Rabbit Polyclonal

Isotype: Immunogen-specific rabbit IgG

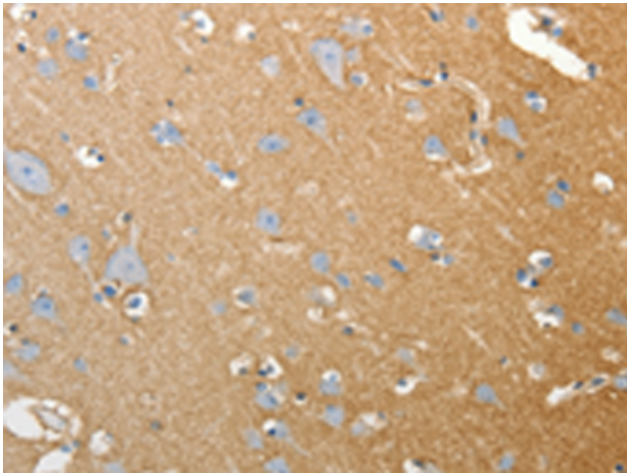
Purification: Antigen affinity purification

Species Reactivity: Human, Mouse, Rat

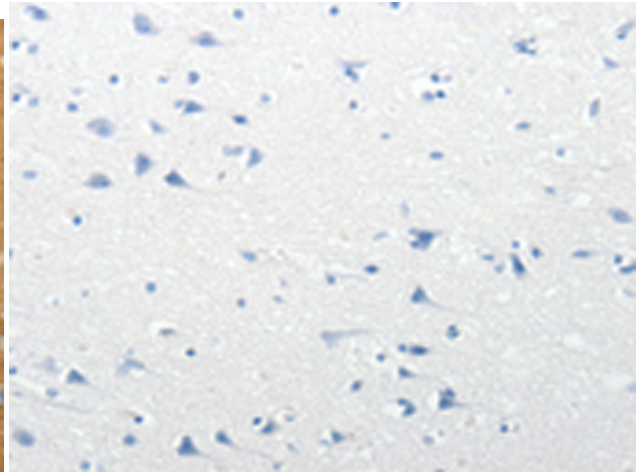
Constituents: PBS (without Mg²⁺ and Ca²⁺), pH 7.4, 150 mM NaCl, 0.05% Sodium Azide and 40% glycerol

Research Areas: Metabolism, Neuroscience

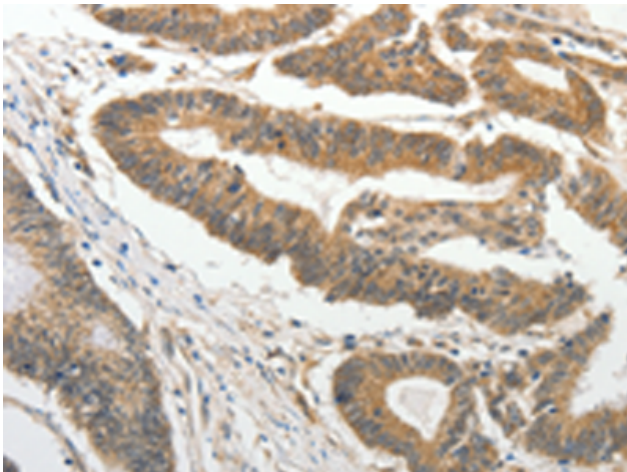
Storage & Shipping: Store at -20°C. Avoid repeated freezing and thawing



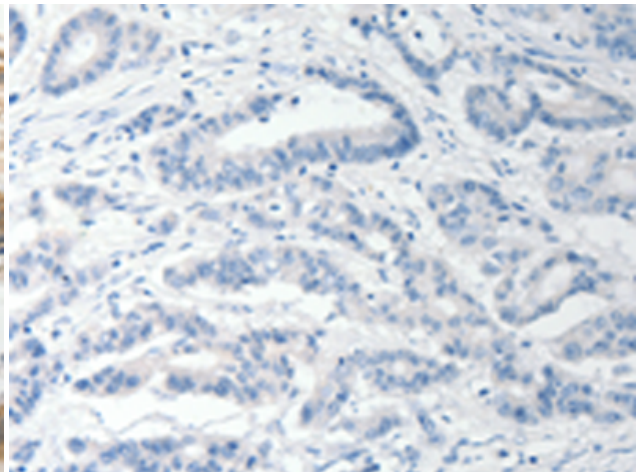
Immunohistochemistry analysis of paraffin-embedded Human brain tissue using 216780(SLC4A4 Antibody) at a dilution of 1/50(Cytoplasm).



In comparison with the IHC on the left, the same paraffin-embedded Human brain tissue is first treated with the fusion protein and then with 216780(Anti-SLC4A4 Antibody) at dilution 1/50.



The image on the left is immunohistochemistry of paraffin-embedded Human colon cancer tissue using 216780(Anti-SLC4A4 Antibody) at a dilution of 1/50.



In comparison with the IHC on the left, the same paraffin-embedded Human colon cancer tissue is first treated with fusion protein and then with D221226(Anti-SLC4A4 Antibody) at dilution 1/50.