

SLC4A3 RABBIT PAB

Cat.#: S221309

Product Name: Anti-SLC4A3 Rabbit Polyclonal Antibody

Synonyms: AE3; SLC2C; CAE3/BAE3

UNIPROT ID: P48751 (Gene Accession - NP_005061)

Background: The protein encoded by this gene is a plasma membrane anion exchange protein. The encoded protein has been found in brain, heart, kidney, small intestine, and lung.

Immunogen: Synthetic peptide of human SLC4A3

Applications: ELISA, WB, IHC

Recommended Dilutions: IHC: 25-50;WB: 1000-5000;ELISA: 5000-10000

Host Species: Rabbit

Clonality: Rabbit Polyclonal

Isotype: Immunogen-specific rabbit IgG

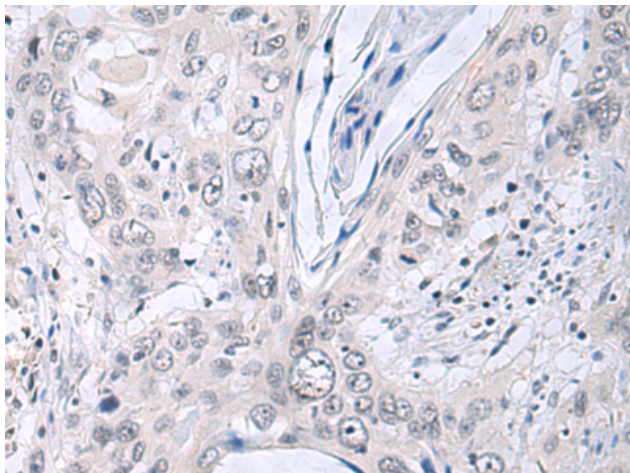
Purification: Antigen affinity purification

Species Reactivity: Human, Mouse, Rat

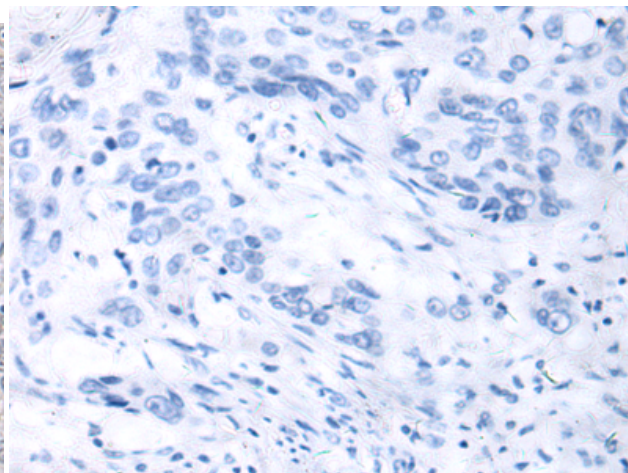
Constituents: PBS (without Mg²⁺ and Ca²⁺), pH 7.4, 150 mM NaCl, 0.05% Sodium Azide and 40% glycerol

Research Areas: Metabolism, Neuroscience

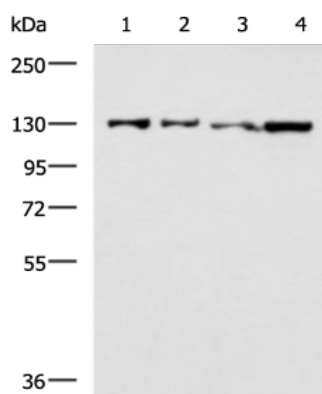
Storage & Shipping: Store at -20°C. Avoid repeated freezing and thawing



Immunohistochemistry analysis of paraffin embedded Human esophagus cancer tissue using 221309(SLC4A3 Antibody) at a dilution of 1/50(Cell membrane).



In comparison with the IHC on the left, the same paraffin-embedded Human esophagus cancer tissue is first treated with the synthetic peptide and then with 221309(Anti-SLC4A3 Antibody) at dilution 1/50.



Gel: 6%SDS-PAGE, Lysate: 40 μ g;
Lane 1-4: PC3, 231, A172 and A375 cell lysates;
Primary antibody: 221309(SLC4A3 Antibody) at dilution 1/1150;
Secondary antibody: HRP-conjugated Goat anti rabbit IgG at 1/5000 dilution;
Exposure time: 1 minute