

SLC44A2 RABBIT PAB

Cat.#: S220933

Product Name: Anti-SLC44A2 Rabbit Polyclonal Antibody

Synonyms: CTL2; PPI292

UNIPROT ID: Q8IWA5 (Gene Accession - NP_065161)

Background: CTL2, also called SLC44A2 (solute carrier family 44 member 2), is a multi-pass membrane protein expressed in cells of the inner ear. CTL2 is a possible candidate for autoimmune hearing loss in humans. Present in supporting cells of the inner ear (at protein level). Only isoform 3 is expressed in inner ear vestibular tissue.

Immunogen: Synthetic peptide of human SLC44A2

Applications: ELISA, IHC

Recommended Dilutions: IHC: 25-100; ELISA: 1000-2000

Host Species: Rabbit

Clonality: Rabbit Polyclonal

Isotype: Immunogen-specific rabbit IgG

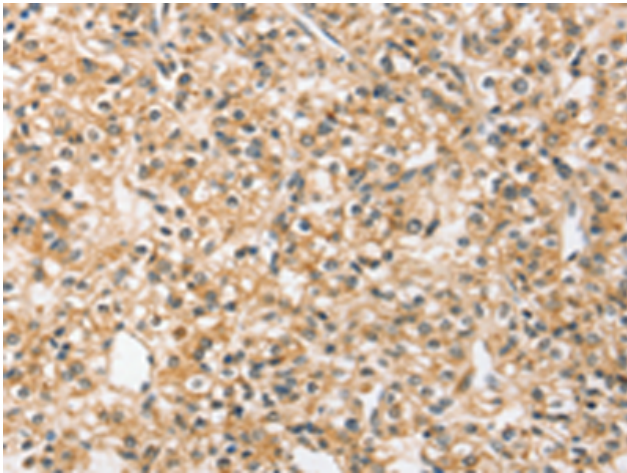
Purification: Antigen affinity purification

Species Reactivity: Human

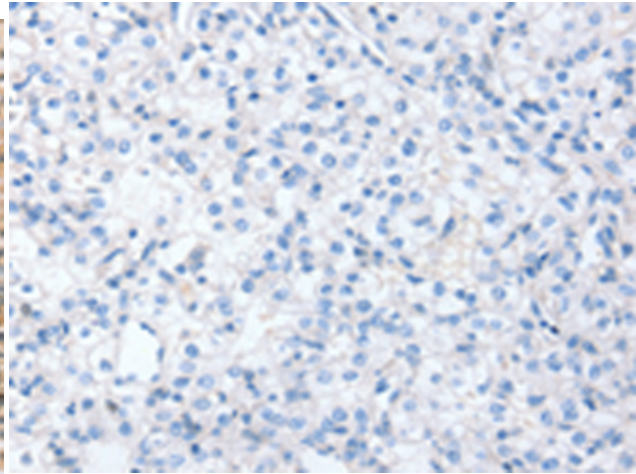
Constituents: PBS (without Mg²⁺ and Ca²⁺), pH 7.4, 150 mM NaCl, 0.05% Sodium Azide and 40% glycerol

Research Areas: Metabolism

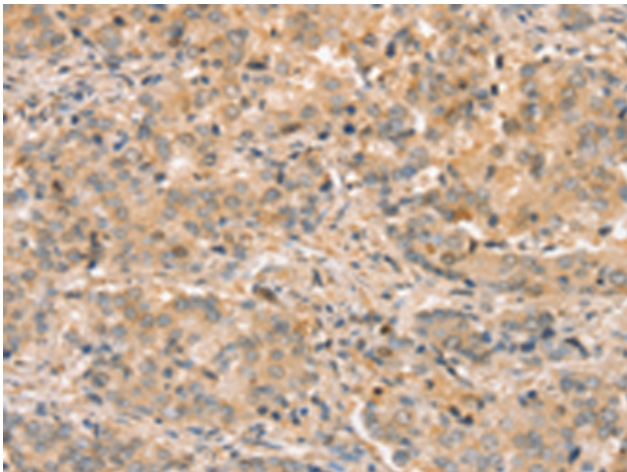
Storage & Shipping: Store at -20°C. Avoid repeated freezing and thawing



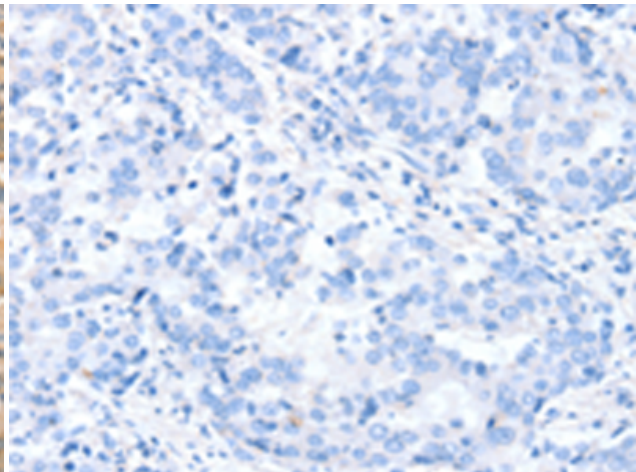
Immunohistochemistry analysis of paraffin embedded Human prostate cancer tissue using 220933 (SLC44A2 Antibody) at a dilution of 1/20 (Cytoplasm or Cell membrane).



In comparison with the IHC on the left, the same paraffin-embedded Human prostate cancer tissue is first treated with the synthetic peptide and then with 220933 (Anti-SLC44A2 Antibody) at dilution 1/20.



The image on the left is immunohistochemistry of paraffin-embedded Human liver cancer tissue using 220933 (Anti-SLC44A2 Antibody) at a dilution of 1/20.



In comparison with the IHC on the left, the same paraffin-embedded Human liver cancer tissue is first treated with synthetic peptide and then with D262245 (Anti-SLC44A2 Antibody) at dilution 1/20.