

SLC44A1 RABBIT PAB

Cat.#: S214704

Product Name: Anti-SLC44A1 Rabbit Polyclonal Antibody

Synonyms: CD92; CTL1; CDW92; CHTL1

UNIPROT ID: Q8WWI5 (Gene Accession - NP_536856)

Background: CD92, also known as SLC44A1 (solute carrier family 44, member 1), CDW92 or CTL1 (choline transporter-like protein 1), is a 657 amino acid multi-pass membrane protein that belongs to the choline transporter-like family of solute carrier proteins. Expressed in cells that are associated with the hematopoietic system, CD92 functions as a choline transporter that may be involved in myelin production, as well as in membrane synthesis. Human CD92 shares 96% sequence homology with its mouse counterpart, suggesting a conserved role between species. Three isoforms of CD92 exist due to alternative splicing events.

Immunogen: Synthetic peptide of human SLC44A1

Applications: ELISA, IHC

Recommended Dilutions: IHC: 25-100; ELISA: 1000-2000

Host Species: Rabbit

Clonality: Rabbit Polyclonal

Isotype: Immunogen-specific rabbit IgG

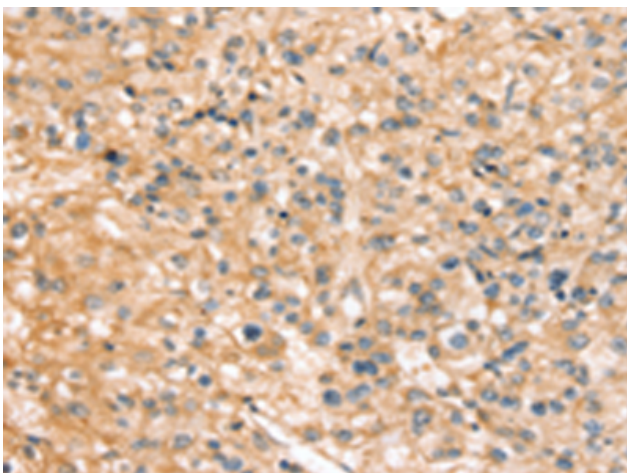
Purification: Antigen affinity purification

Species Reactivity: Human, Mouse, Rat

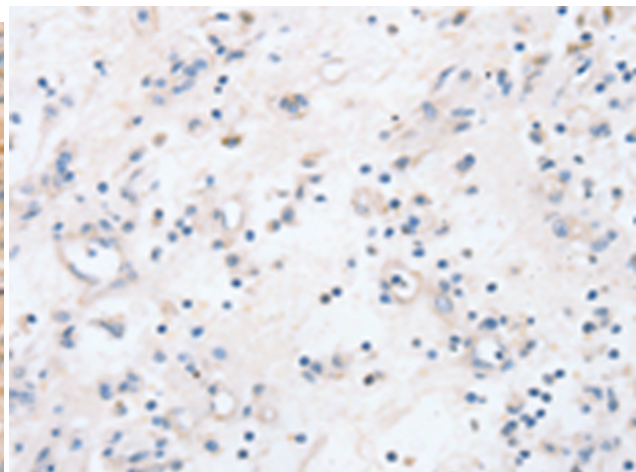
Constituents: PBS (without Mg²⁺ and Ca²⁺), pH 7.4, 150 mM NaCl, 0.05% Sodium Azide and 40% glycerol

Research Areas: Metabolism

Storage & Shipping: Store at -20°C. Avoid repeated freezing and thawing



Immunohistochemistry analysis of paraffin embedded Human prostate cancer tissue using 214704(SLC44A1 Antibody) at a dilution of 1/20(Cytoplasm or Cell membrane).



In comparison with the IHC on the left, the same paraffin-embedded Human prostate cancer tissue is first treated with the synthetic peptide and then with 214704(Anti-SLC44A1 Antibody) at dilution 1/20.