

SLC40A1 RABBIT PAB

Cat.#: S214701

Product Name: Anti-SLC40A1 Rabbit Polyclonal Antibody

Synonyms: FPN1; HFE4; MTP1; IREG1; MST079; MSTP079; SLC11A3

UNIPROT ID: Q9NP59 (Gene Accession - NP_055400)

Background: The protein encoded by this gene is a cell membrane protein that may be involved in iron export from duodenal epithelial cells. Defects in this gene are a cause of hemochromatosis type 4 (HFE4).

Immunogen: Synthetic peptide of human SLC40A1

Applications: ELISA, IHC

Recommended Dilutions: IHC: 25-100; ELISA: 1000-2000

Host Species: Rabbit

Clonality: Rabbit Polyclonal

Isotype: Immunogen-specific rabbit IgG

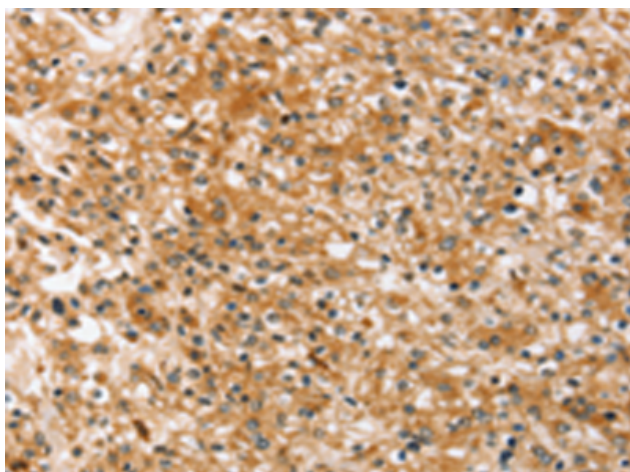
Purification: Antigen affinity purification

Species Reactivity: Human

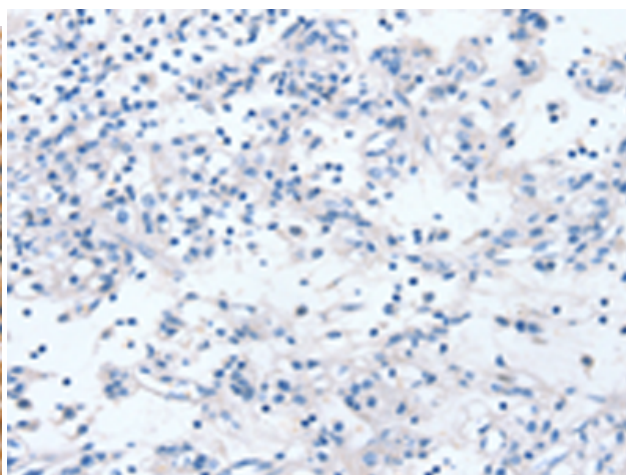
Constituents: PBS (without Mg²⁺ and Ca²⁺), pH 7.4, 150 mM NaCl, 0.05% Sodium Azide and 40% glycerol

Research Areas: Metabolism

Storage & Shipping: Store at -20°C. Avoid repeated freezing and thawing



Immunohistochemistry analysis of paraffin embedded Human prostate cancer tissue using 214701(SLC40A1 Antibody) at a dilution of 1/20(Cytoplasm or Cell membrane).



In comparison with the IHC on the left, the same paraffin-embedded Human prostate cancer tissue is first treated with the synthetic peptide and then with 214701(Anti-SLC40A1 Antibody) at dilution 1/20.