

## SLC3A2 RABBIT PAB

**Cat.#:** S212185

**Product Name:** Anti-SLC3A2 Rabbit Polyclonal Antibody

**Synonyms:** 4F2; CD98; MDU1; 4F2HC; 4T2HC; NACAE; CD98HC

**UNIPROT ID:** P08195 (Gene Accession - BC001061)

**Background:** This gene is a member of the solute carrier family and encodes a cell surface, transmembrane protein. The protein exists as the heavy chain of a heterodimer, covalently bound through di-sulfide bonds to one of several possible light chains. The encoded transporter plays a role in regulation of intracellular calcium levels and transports L-type amino acids. Alternatively spliced transcript variants, encoding different isoforms, have been characterized.

**Immunogen:** Fusion protein of human SLC3A2

**Applications:** ELISA, WB, IHC

**Recommended Dilutions:** IHC: 30-150;WB: 500-2000;ELISA: 5000-10000

**Host Species:** Rabbit

**Clonality:** Rabbit Polyclonal

**Isotype:** Immunogen-specific rabbit IgG

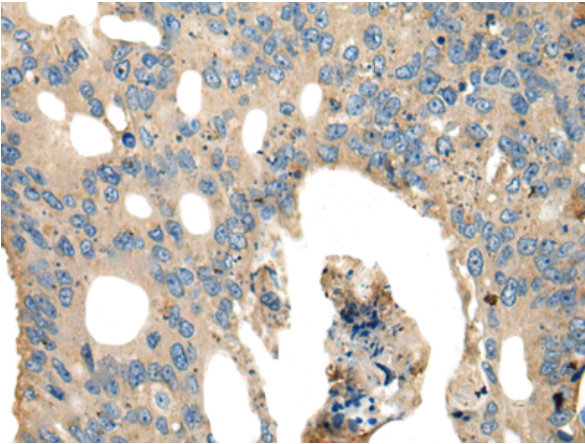
**Purification:** Antigen affinity purification

**Species Reactivity:** Human

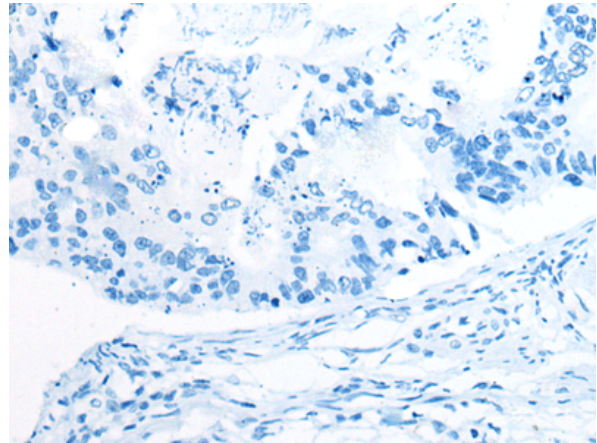
**Constituents:** PBS (without Mg<sup>2+</sup> and Ca<sup>2+</sup>), pH 7.4, 150 mM NaCl, 0.05% Sodium Azide and 40% glycerol

**Research Areas:** Metabolism, Signal Transduction, Immunology, Stem Cells

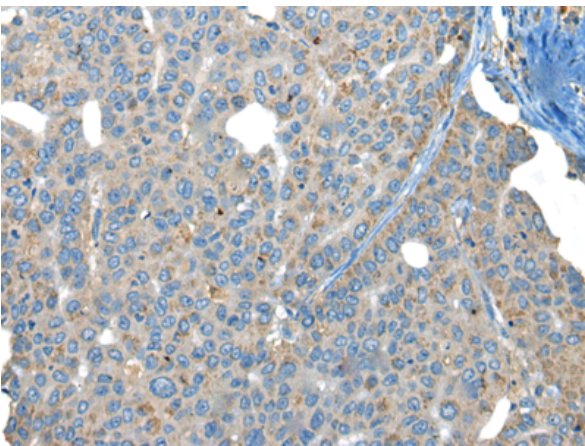
**Storage & Shipping:** Store at -20°C. Avoid repeated freezing and thawing



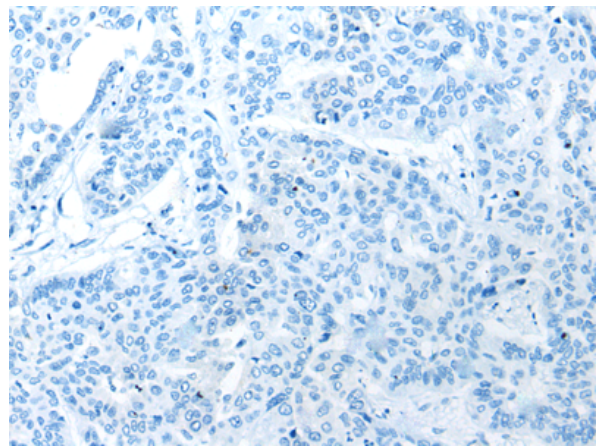
Immunohistochemistry analysis of paraffin embedded Human colorectal cancer tissue using 212185 (SLC3A2 Antibody) at a dilution of 1/40 (Cytoplasm).



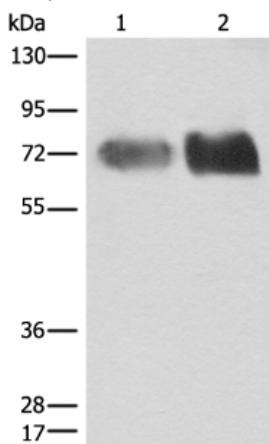
In comparison with the IHC on the left, the same paraffin-embedded Human colorectal cancer tissue is first treated with the fusion protein and then with 212185 (Anti-SLC3A2 Antibody) at dilution 1/40.



The image on the left is immunohistochemistry of paraffin-embedded Human liver cancer tissue using 212185 (Anti-SLC3A2 Antibody) at a dilution of 1/40.



In comparison with the IHC on the left, the same paraffin-embedded Human liver cancer tissue is first treated with fusion protein and then with D124480 (Anti-SLC3A2 Antibody) at dilution 1/40.



Gel: 8% SDS-PAGE, Lysate: 40 µg;  
Lane 1-2: A375 and Jurkat cell lysates;  
Primary antibody: 212185 (SLC3A2 Antibody) at dilution 1/200;  
Secondary antibody: Goat anti rabbit IgG at 1/8000 dilution;  
Exposure time: 3 seconds



# Product Description

Pioneering GTPase and Oncogene Product Development since 2010

---