

SLC39A7 RABBIT PAB

Cat.#: S220855

Product Name: Anti-SLC39A7 Rabbit Polyclonal Antibody

Synonyms: KE4; HKE4; ZIP7; RING5; H2-KE4; D6S115E; D6S2244E

UNIPROT ID: Q92504 (Gene Accession - NP_001070984)

Background: The protein encoded by this gene transports zinc from the Golgi and endoplasmic reticulum to the cytoplasm. This transport may be important for activation of tyrosine kinases, some of which could be involved in cancer progression. Therefore, modulation of the encoded protein could be useful as a therapeutic agent against cancer. Alternative splicing results in multiple transcript variants.

Immunogen: Synthetic peptide of human SLC39A7

Applications: ELISA, WB, IHC

Recommended Dilutions: IHC: 25-100;WB: 200-1000;ELISA: 1000-2000

Host Species: Rabbit

Clonality: Rabbit Polyclonal

Isotype: Immunogen-specific rabbit IgG

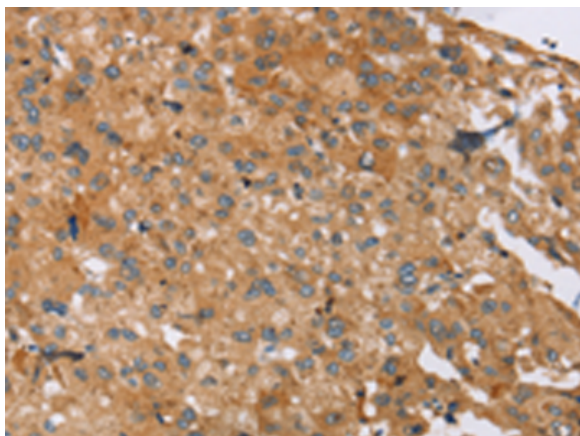
Purification: Antigen affinity purification

Species Reactivity: Human, Mouse

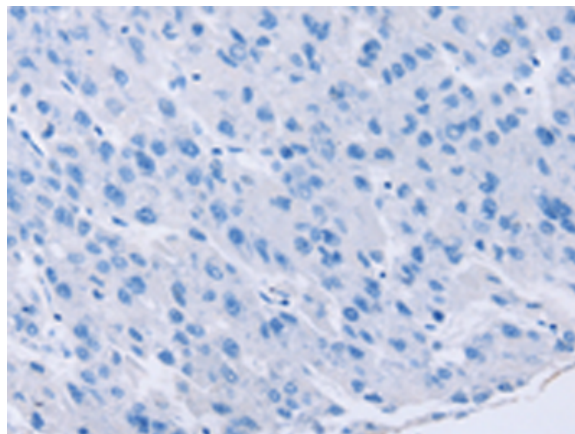
Constituents: PBS (without Mg²⁺ and Ca²⁺), pH 7.4, 150 mM NaCl, 0.05% Sodium Azide and 40% glycerol

Research Areas: Metabolism

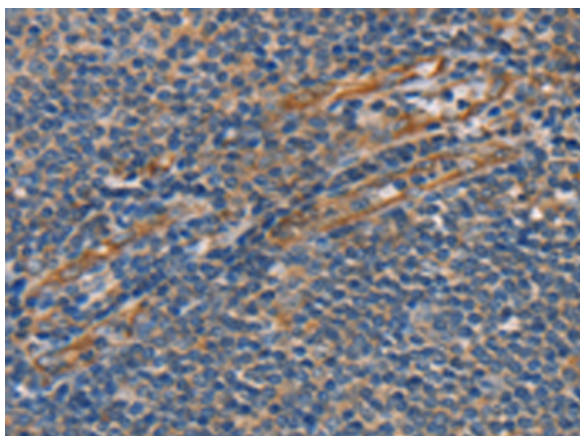
Storage & Shipping: Store at -20°C. Avoid repeated freezing and thawing



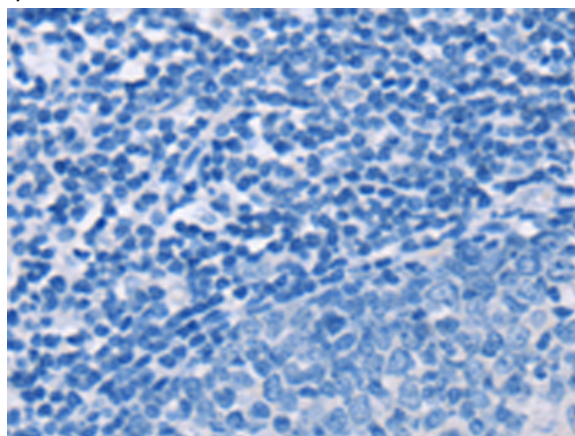
Immunohistochemistry analysis of paraffin embedded Human liver cancer tissue using 220855(SLC39A7 Antibody) at a dilution of 1/25(Cytoplasm).



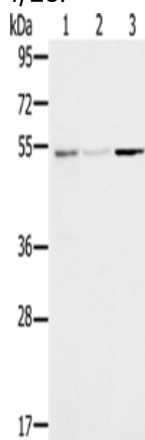
In comparison with the IHC on the left, the same paraffin-embedded Human liver cancer tissue is first treated with the synthetic peptide and then with 220855(Anti-SLC39A7 Antibody) at dilution 1/25.



The image on the left is immunohistochemistry of paraffin-embedded Human tonsil tissue using 220855(Anti-SLC39A7 Antibody) at a dilution of 1/25.



In comparison with the IHC on the left, the same paraffin-embedded Human tonsil tissue is first treated with synthetic peptide and then with D262129(Anti-SLC39A7 Antibody) at dilution 1/25.



Gel: 8%SDS-PAGE, Lysate: 40 µg;
 Lane 1-3: Human placenta tissue, huvec cells, mouse brain tissue;
 Primary antibody: 220855(SLC39A7 Antibody) at dilution 1/200;
 Secondary antibody: Goat anti rabbit IgG at 1/8000 dilution;
 Exposure time: 30 seconds



Product Description

Pioneering GTPase and Oncogene Product Development since 2010
