

## SLC39A6 RABBIT PAB

**Cat.#:** S219991

**Product Name:** Anti-SLC39A6 Rabbit Polyclonal Antibody

**Synonyms:** LIV-1

**UNIPROT ID:** Q13433 (Gene Accession - NP\_001092876 )

**Background:** Zinc is an essential cofactor for hundreds of enzymes. It is involved in protein, nucleic acid, carbohydrate, and lipid metabolism, as well as in the control of gene transcription, growth, development, and differentiation. SLC39A6 belongs to a subfamily of proteins that show structural characteristics of zinc transporters.

**Immunogen:** Synthetic peptide of human SLC39A6

**Applications:** ELISA, WB, IHC

**Recommended Dilutions:** IHC: 25-100;WB: 500-2000;ELISA: 1000-5000

**Host Species:** Rabbit

**Clonality:** Rabbit Polyclonal

**Isotype:** Immunogen-specific rabbit IgG

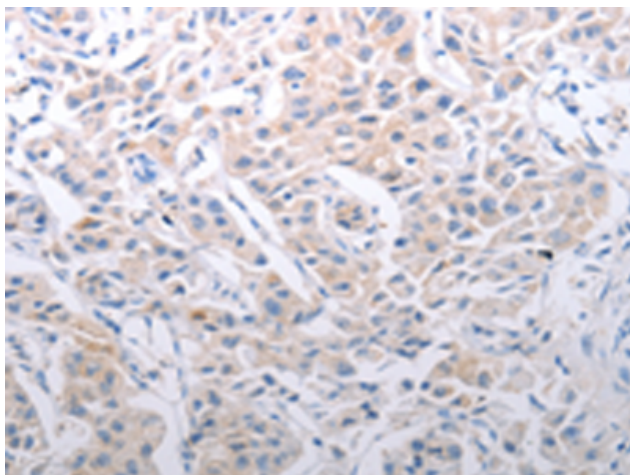
**Purification:** Antigen affinity purification

**Species Reactivity:** Human, Mouse, Rat

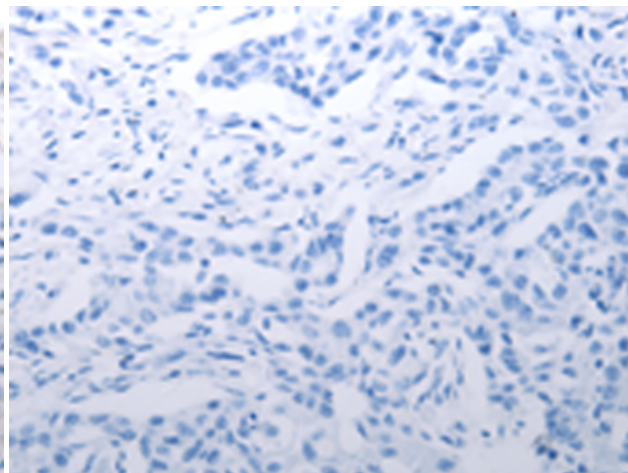
**Constituents:** PBS (without Mg<sup>2+</sup> and Ca<sup>2+</sup>), pH 7.4, 150 mM NaCl, 0.05% Sodium Azide and 40% glycerol

**Research Areas:** Metabolism

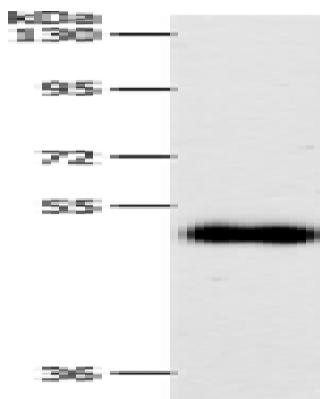
**Storage & Shipping:** Store at -20°C. Avoid repeated freezing and thawing



Immunohistochemistry analysis of paraffin embedded Human lung cancer tissue using 219991(SLC39A6 Antibody) at a dilution of 1/30(Cytoplasm).



In comparison with the IHC on the left, the same paraffin-embedded Human lung cancer tissue is first treated with the synthetic peptide and then with 219991(Anti-SLC39A6 Antibody) at dilution 1/30.



Gel: 10%SDS-PAGE, Lysate: 60 µg;  
Lane: Human colon cancer tissue;  
Primary antibody: 219991(SLC39A6 Antibody)  
at dilution 1/500;  
Secondary antibody: Goat anti rabbit IgG at  
1/8000 dilution;  
Exposure time: 5 minutes