

SLC39A3 RABBIT PAB

Cat.#: S220929

Product Name: Anti-SLC39A3 Rabbit Polyclonal Antibody

Synonyms: ZIP3; ZIP-3

UNIPROT ID: Q9BRY0 (Gene Accession - NP_653165)

Background: SLC39A3 (solute carrier family 39, member 2), is a 314 amino acid acid multi-pass membrane protein that localizes to the cell membrane and belongs to the ZIP family of zinc transporters. Two isoforms of ZIP3 exist as a result of alternative splicing events. ZIP3 is involved in translocation of extracellular zinc into a variety of cell types. Tumorigenic prostate epithelial cells contain less intracellular zinc than non-tumorigenic prostate epithelial cells. Loss of the ability to maintain zinc accumulation may be caused by the decrease in the ZIP1 protein expression and the intracellular redistribution of ZIP3.

Immunogen: Synthetic peptide of human SLC39A3

Applications: ELISA, IHC

Recommended Dilutions: IHC: 25-100; ELISA: 1000-2000

Host Species: Rabbit

Clonality: Rabbit Polyclonal

Isotype: Immunogen-specific rabbit IgG

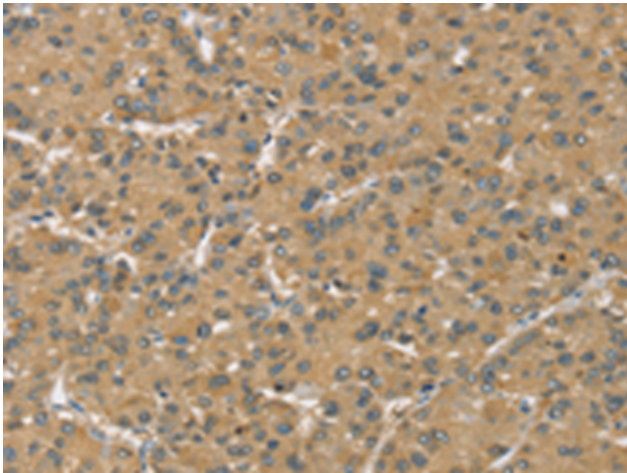
Purification: Antigen affinity purification

Species Reactivity: Human, Mouse, Rat

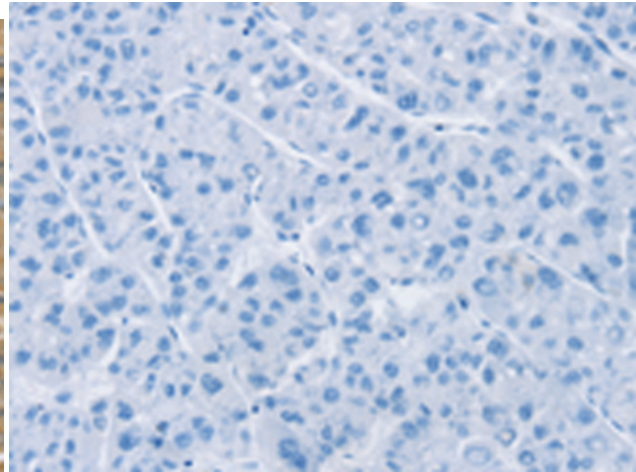
Constituents: PBS (without Mg²⁺ and Ca²⁺), pH 7.4, 150 mM NaCl, 0.05% Sodium Azide and 40% glycerol

Research Areas: Metabolism

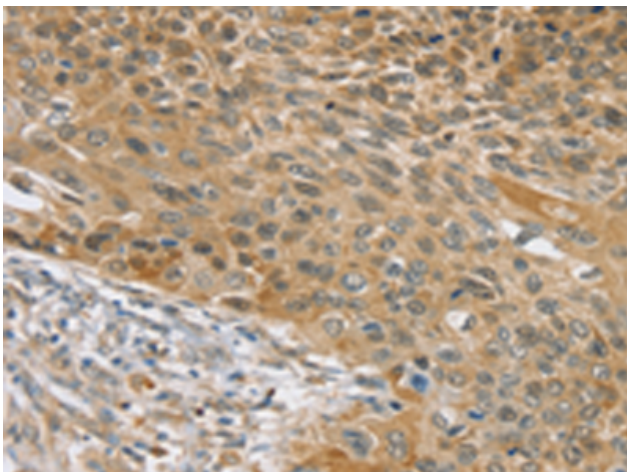
Storage & Shipping: Store at -20°C. Avoid repeated freezing and thawing



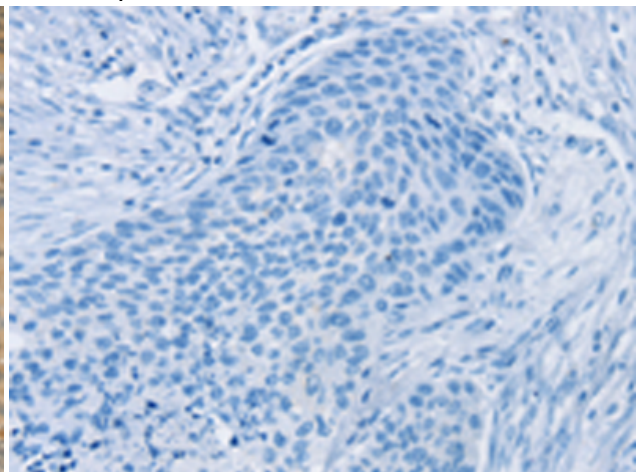
Immunohistochemistry analysis of paraffin embedded Human liver cancer tissue using 220929(SLC39A3 Antibody) at a dilution of 1/30(Cytoplasm).



In comparison with the IHC on the left, the same paraffin-embedded Human liver cancer tissue is first treated with the synthetic peptide and then with 220929(Anti-SLC39A3 Antibody) at dilution 1/30.



The image on the left is immunohistochemistry of paraffin-embedded Human esophagus cancer tissue using 220929(Anti-SLC39A3 Antibody) at a dilution of 1/30.



In comparison with the IHC on the left, the same paraffin-embedded Human esophagus cancer tissue is first treated with synthetic peptide and then with D262236(Anti-SLC39A3 Antibody) at dilution 1/30.