

SLC30A3 RABBIT PAB

Cat.#: S219370

Product Name: Anti-SLC30A3 Rabbit Polyclonal Antibody

Synonyms: ZNT3

UNIPROT ID: Q99726 (Gene Accession - BC028358)

Background: Involved in accumulation of zinc in synaptic vesicles.

Immunogen: Fusion protein of human SLC30A3

Applications: ELISA, WB, IHC

Recommended Dilutions: IHC: 50-100;WB: 500-2000;ELISA: 5000-10000

Host Species: Rabbit

Clonality: Rabbit Polyclonal

Isotype: Immunogen-specific rabbit IgG

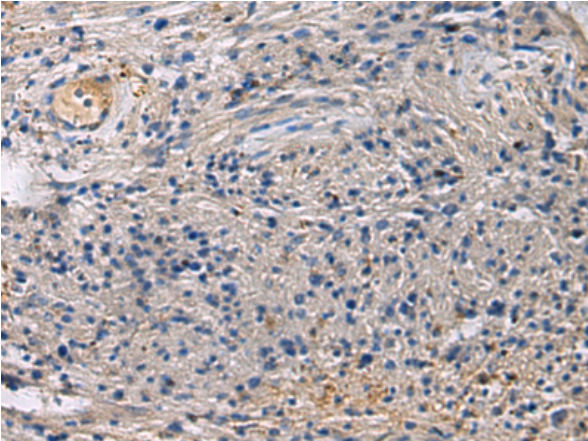
Purification: Antigen affinity purification

Species Reactivity: Human, Mouse, Rat

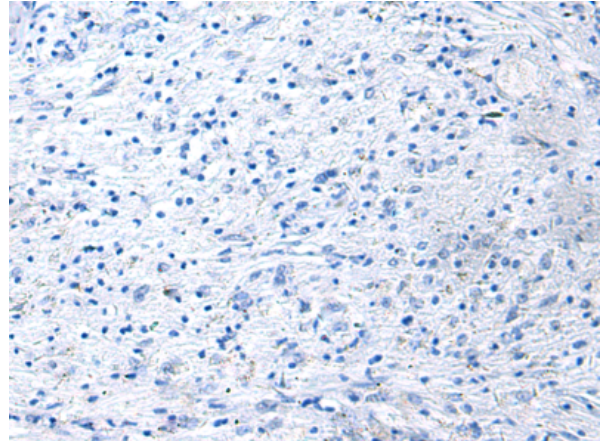
Constituents: PBS (without Mg²⁺ and Ca²⁺), pH 7.4, 150 mM NaCl, 0.05% Sodium Azide and 40% glycerol

Research Areas: Neuroscience

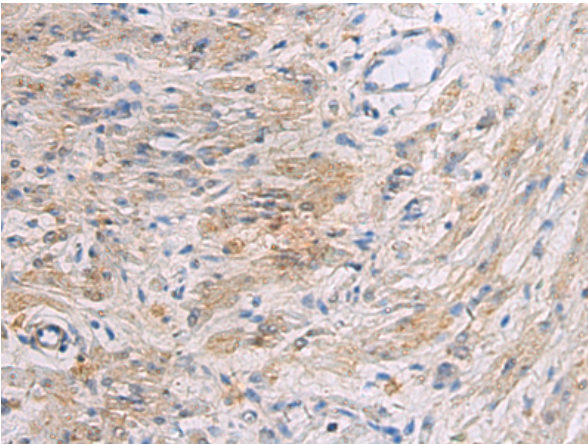
Storage & Shipping: Store at -20°C. Avoid repeated freezing and thawing



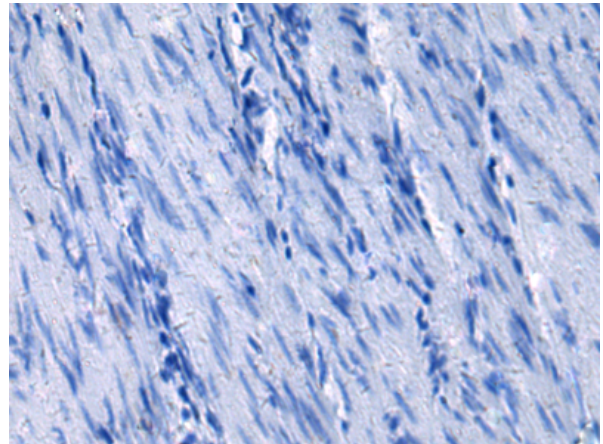
Immunohistochemistry analysis of paraffin embedded Human brain tissue using 219370(SLC30A3 Antibody) at a dilution of 1/55(Cytoplasm).



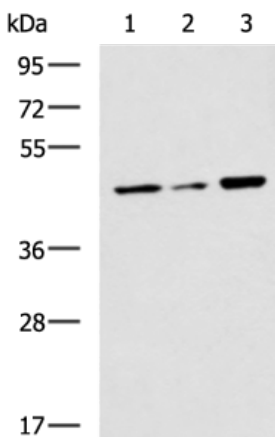
In comparison with the IHC on the left, the same paraffin-embedded Human brain tissue is first treated with the fusion protein and then with 219370(Anti-SLC30A3 Antibody) at dilution 1/55.



The image on the left is immunohistochemistry of paraffin-embedded Human gastric cancer tissue using 219370(Anti-SLC30A3 Antibody) at a dilution of 1/55.



In comparison with the IHC on the left, the same paraffin-embedded Human gastric cancer tissue is first treated with fusion protein and then with D226562(Anti-SLC30A3 Antibody) at dilution 1/55.



Gel: 8%SDS-PAGE, Lysate: 40 µg;
 Lane 1-3: K562, Jurkat and 293T cell lysates;
 Primary antibody: 219370(SLC30A3 Antibody) at dilution 1/550;
 Secondary antibody: HRP-conjugated Goat anti rabbit IgG at 1/5000 dilution;
 Exposure time: 10 seconds



Product Description

Pioneering GTPase and Oncogene Product Development since 2010
