

SLC2A6 RABBIT PAB

Cat.#: S215012

Product Name: Anti-SLC2A6 Rabbit Polyclonal Antibody

Synonyms: GLUT6; GLUT9; HSA011372

UNIPROT ID: Q9UGQ3 (Gene Accession - NP_060055)

Background: Members of the Glut family may enhance the metabolic activity of tumor cells. Glut6 is part of the third out of three classes of Gluts. Glut6 is mainly expressed in the brain, spleen and peripheral leukocytes. It appears to be regulated by subcellular redistribution, because it is targeted to intracellular compartments by di-leucine motifs, recycling itself in a Dynamin-dependent manner.

Immunogen: Synthetic peptide of human SLC2A6

Applications: ELISA, WB, IHC

Recommended Dilutions: IHC: 25-100;WB: 200-1000;ELISA: 5000-10000

Host Species: Rabbit

Clonality: Rabbit Polyclonal

Isotype: Immunogen-specific rabbit IgG

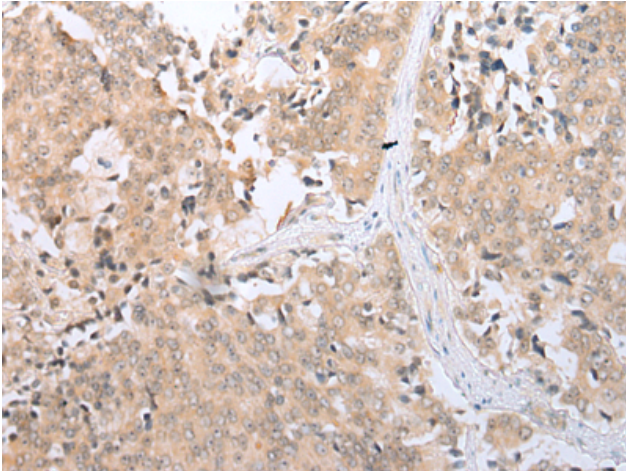
Purification: Antigen affinity purification

Species Reactivity: Human

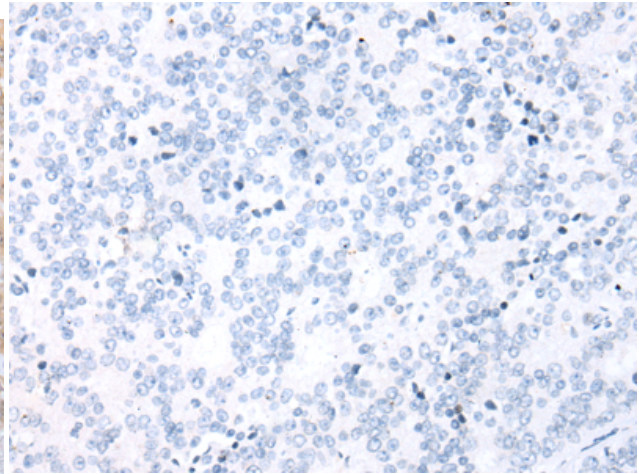
Constituents: PBS (without Mg²⁺ and Ca²⁺), pH 7.4, 150 mM NaCl, 0.05% Sodium Azide and 40% glycerol

Research Areas: Metabolism

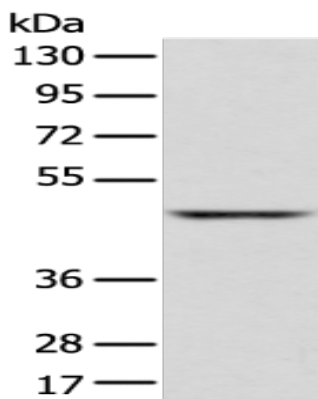
Storage & Shipping: Store at -20°C. Avoid repeated freezing and thawing



Immunohistochemistry analysis of paraffin embedded Human prostate cancer tissue using 215012 (SLC2A6 Antibody) at a dilution of 1/25 (Cytoplasm and Cell membrane).



In comparison with the IHC on the left, the same paraffin-embedded Human prostate cancer tissue is first treated with the synthetic peptide and then with 215012 (Anti-SLC2A6 Antibody) at dilution 1/25.



Gel: 8% SDS-PAGE, Lysate: 40 μ g;
Lane: Human fetal liver tissue;
Primary antibody: 215012 (SLC2A6 Antibody) at dilution 1/350;
Secondary antibody: Goat anti rabbit IgG at 1/8000 dilution;
Exposure time: 1 minute