

## SLC2A12 RABBIT PAB

**Cat.#:** S219825

**Product Name:** Anti-SLC2A12 Rabbit Polyclonal Antibody

**Synonyms:** GLUT8; GLUT12

**UNIPROT ID:** Q8TD20 (Gene Accession - NP\_660159)

**Background:** SLC2A12 belongs to a family of transporters that catalyze the uptake of sugars through facilitated diffusion (Rogers et al., 2002). This family of transporters show conservation of 12 transmembrane helices as well as functionally significant amino acid residues (Joost and Thorens, 2001 [PubMed 11780753]).

**Immunogen:** Synthetic peptide of human SLC2A12

**Applications:** ELISA, IHC

**Recommended Dilutions:** IHC: 50-100; ELISA: 5000-10000

**Host Species:** Rabbit

**Clonality:** Rabbit Polyclonal

**Isotype:** Immunogen-specific rabbit IgG

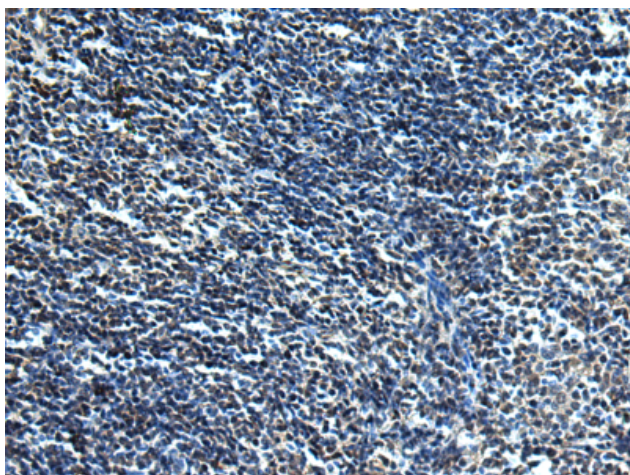
**Purification:** Antigen affinity purification

**Species Reactivity:** Human

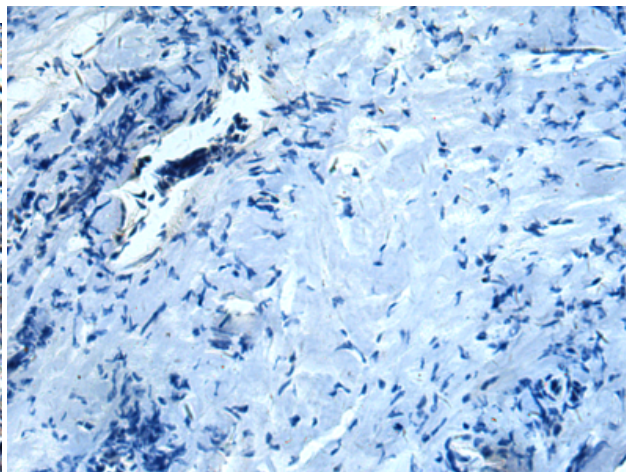
**Constituents:** PBS (without Mg<sup>2+</sup> and Ca<sup>2+</sup>), pH 7.4, 150 mM NaCl, 0.05% Sodium Azide and 40% glycerol

**Research Areas:** Metabolism, Cardiovascular

**Storage & Shipping:** Store at -20°C. Avoid repeated freezing and thawing



Immunohistochemistry analysis of paraffin embedded Human tonsil tissue using 219825(SLC2A12 Antibody) at a dilution of 1/30(Cytoplasm).



In comparison with the IHC on the left, the same paraffin-embedded Human tonsil tissue is first treated with the synthetic peptide and then with 219825(Anti-SLC2A12 Antibody) at dilution 1/30.