

SLC2A11 RABBIT PAB

Cat.#: S213576

Product Name: Anti-SLC2A11 Rabbit Polyclonal Antibody

Synonyms: GLUT10, GLUT11, SLC2A11- α , SLC2A11-c

UNIPROT ID: Q9BYW1 (Gene Accession - NP_110434)

Background: Solute carrier family 2, facilitated glucose transporter member 11 (SLC2A11) also known as glucose transporter type 10/11 (GLUT-10/11) is a protein that in humans is encoded by the SLC2A11 gene. SLC2A11 belongs to a family of plasma membrane proteins that mediate transport of sugars across the membrane by facilitative diffusion.

Immunogen: Synthetic peptide of human SLC2A11

Applications: ELISA, IHC

Recommended Dilutions: IHC: 100-300; ELISA: 2000-10000

Host Species: Rabbit

Clonality: Rabbit Polyclonal

Isotype: Immunogen-specific rabbit IgG

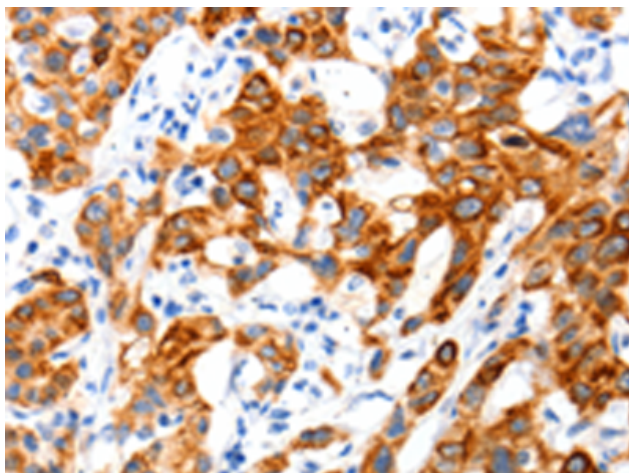
Purification: Antigen affinity purification

Species Reactivity: Human

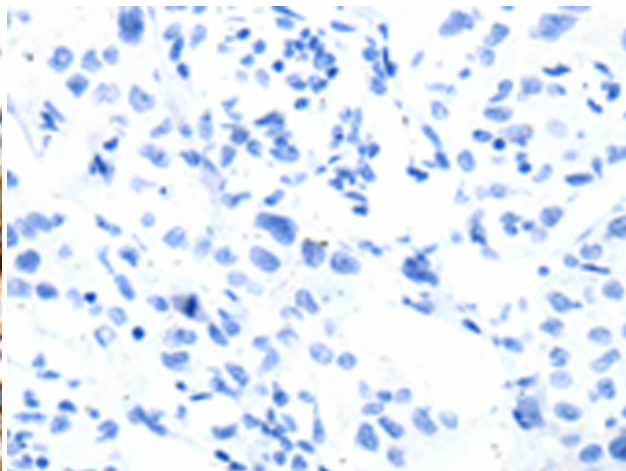
Constituents: PBS (without Mg²⁺ and Ca²⁺), pH 7.4, 150 mM NaCl, 0.05% Sodium Azide and 40% glycerol

Research Areas: Signal Transduction

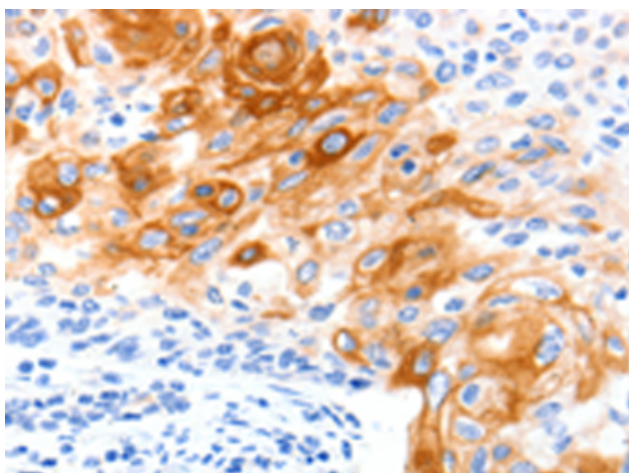
Storage & Shipping: Store at -20°C. Avoid repeated freezing and thawing



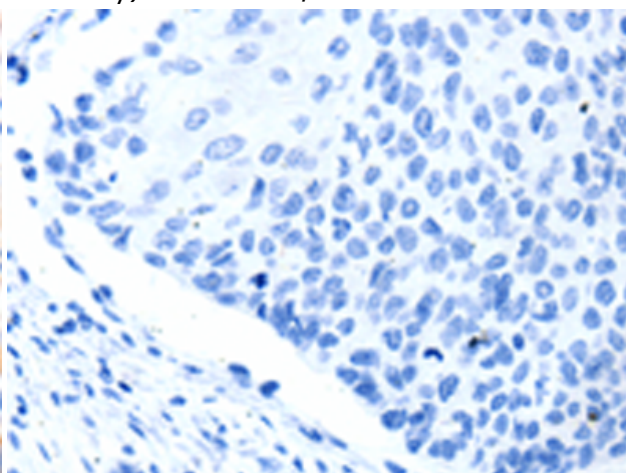
Immunohistochemistry analysis of paraffin embedded Human lung cancer tissue using 213576 (SLC2A11 Antibody) at a dilution of 1/140 (Cytoplasm, Cell membrane).



In comparison with the IHC on the left, the same paraffin-embedded Human lung cancer tissue is first treated with the synthetic peptide and then with 213576 (Anti-SLC2A11 Antibody) at dilution 1/140.



The image on the left is immunohistochemistry of paraffin-embedded Human cervical cancer tissue using 213576 (Anti-SLC2A11 Antibody) at a dilution of 1/140.



In comparison with the IHC on the left, the same paraffin-embedded Human cervical cancer tissue is first treated with synthetic peptide and then with D160439 (Anti-SLC2A11 Antibody) at dilution 1/140.