

SLC28A2 RABBIT PAB

Cat.#: S221887

Product Name: Anti-SLC28A2 Rabbit Polyclonal Antibody

Synonyms: CNT2; HCNT2; SPNT1; HsT17153

UNIPROT ID: O43868 (Gene Accession - NP_004203)

Background: Sodium-dependent and purine-selective transporter. Exhibits the transport characteristics of the nucleoside transport system cif or NI subtype (NI/cif) (selective for purine nucleosides and uridine). Plays a critical role in specific uptake and salvage of purine nucleosides in kidney and other tissues.

Immunogen: Synthetic peptide of human SLC28A2

Applications: ELISA, IHC

Recommended Dilutions: IHC: 20-100; ELISA: 5000-10000

Host Species: Rabbit

Clonality: Rabbit Polyclonal

Isotype: Immunogen-specific rabbit IgG

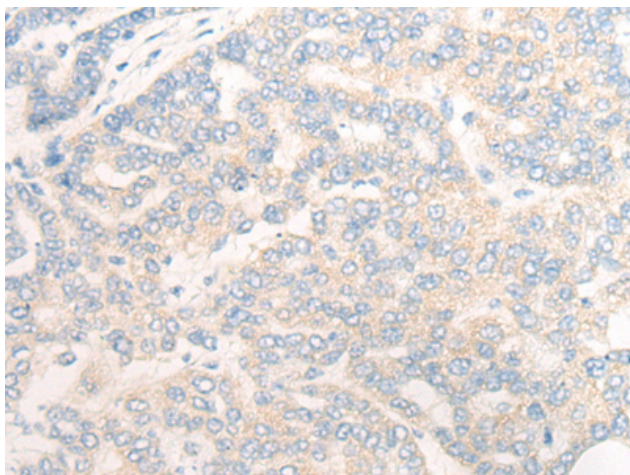
Purification: Antigen affinity purification

Species Reactivity: Human, Mouse, Rat

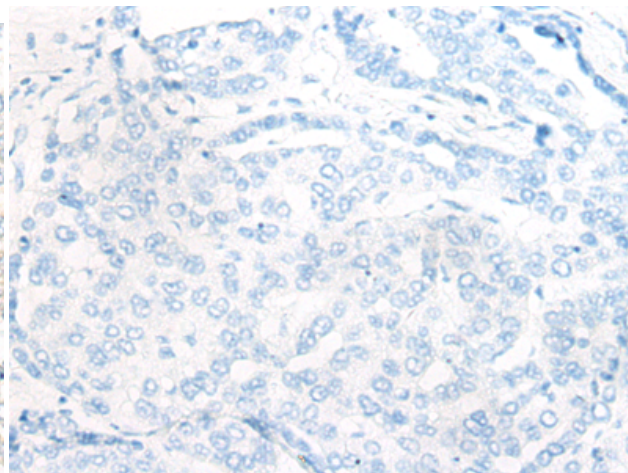
Constituents: PBS (without Mg²⁺ and Ca²⁺), pH 7.4, 150 mM NaCl, 0.05% Sodium Azide and 40% glycerol

Research Areas: Metabolism

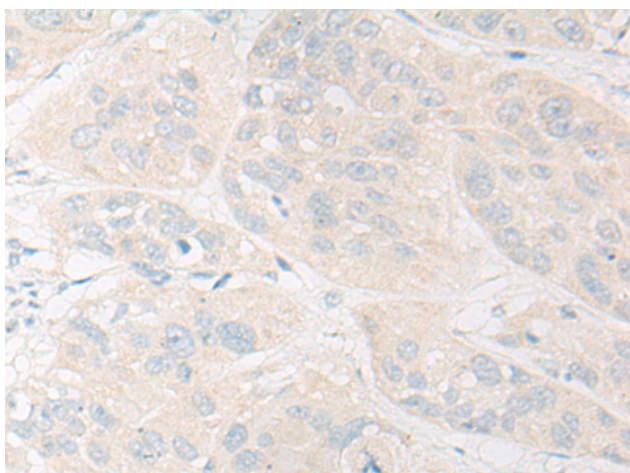
Storage & Shipping: Store at -20°C. Avoid repeated freezing and thawing



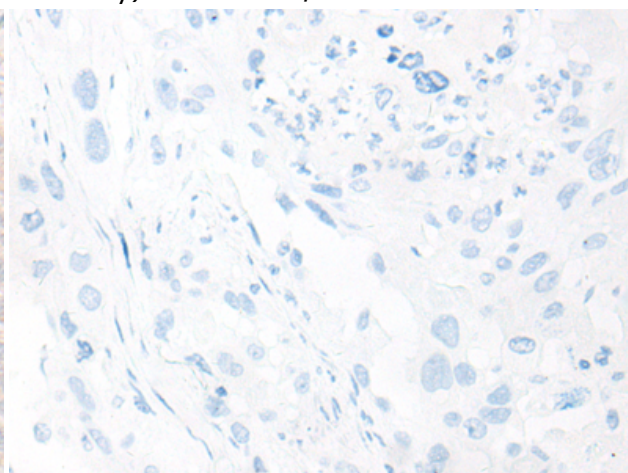
Immunohistochemistry analysis of paraffin-embedded Human liver cancer tissue using 221887 (SLC28A2 Antibody) at a dilution of 1/20 (Cell membrane and Cytoplasm).



In comparison with the IHC on the left, the same paraffin-embedded Human liver cancer tissue is first treated with the synthetic peptide and then with 221887 (Anti-SLC28A2 Antibody) at dilution 1/20.



The image on the left is immunohistochemistry of paraffin-embedded Human esophagus cancer tissue using 221887 (Anti-SLC28A2 Antibody) at a dilution of 1/20.



In comparison with the IHC on the left, the same paraffin-embedded Human esophagus cancer tissue is first treated with synthetic peptide and then with D263690 (Anti-SLC28A2 Antibody) at dilution 1/20.