

SLC28A1 RABBIT PAB

Cat.#: S222325

Product Name: Anti-SLC28A1 Rabbit Polyclonal Antibody

Synonyms: CNT1; HCNT1; URCTU

UNIPROT ID: O00337 (Gene Accession - NP_001274691)

Background: Enables azole transmembrane transporter activity; cytidine transmembrane transporter activity; and uridine transmembrane transporter activity. Involved in azole transmembrane transport; nucleoside transport; and pyrimidine-containing compound transmembrane transport. Located in cytosol; nuclear speck; and plasma membrane.

Immunogen: Synthetic peptide of human SLC28A1

Applications: ELISA, WB, IHC

Recommended Dilutions: IHC: 50-200;WB: 500-2000;ELISA: 5000-10000

Host Species: Rabbit

Clonality: Rabbit Polyclonal

Isotype: Immunogen-specific rabbit IgG

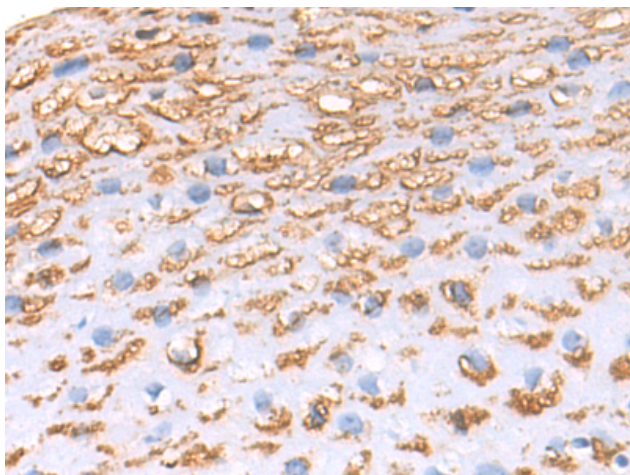
Purification: Antigen affinity purification

Species Reactivity: Human

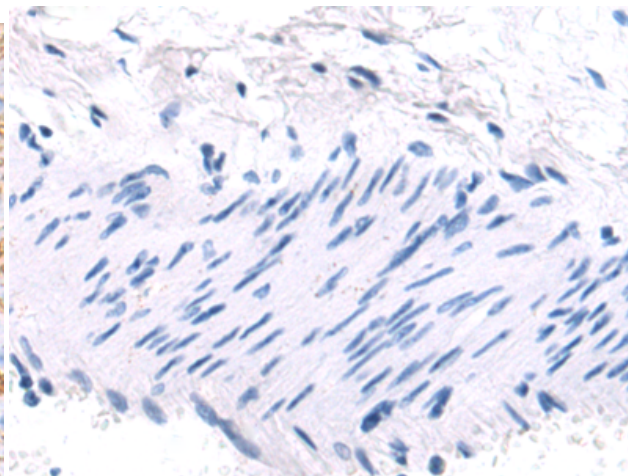
Constituents: PBS (without Mg²⁺ and Ca²⁺), pH 7.4, 150 mM NaCl, 0.05% Sodium Azide and 40% glycerol

Research Areas: Cell Biology

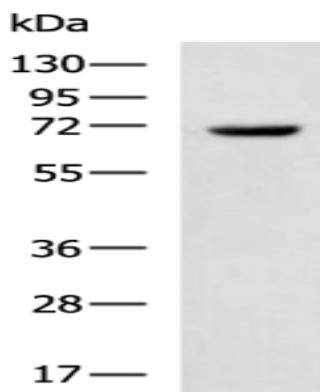
Storage & Shipping: Store at -20°C. Avoid repeated freezing and thawing



Immunohistochemistry analysis of paraffin embedded Human esophagus cancer tissue using 222325(SLC28A1 Antibody) at a dilution of 1/50(Cell membrane).



In comparison with the IHC on the left, the same paraffin-embedded Human esophagus cancer tissue is first treated with the synthetic peptide and then with 222325(Anti-SLC28A1 Antibody) at dilution 1/50.



Gel: 8%SDS-PAGE, Lysate: 40 μ g;
Lane: 293T cell lysate;
Primary antibody: 222325(SLC28A1 Antibody) at dilution 1/600;
Secondary antibody: HRP-conjugated Goat anti rabbit IgG at 1/5000 dilution;
Exposure time: 5 seconds