

## SLC26A5 RABBIT PAB

**Cat.#:** S220925

**Product Name:** Anti-SLC26A5 Rabbit Polyclonal Antibody

**Synonyms:** PRES; DFNB61

**UNIPROT ID:** P58743 (Gene Accession - NP\_945350 )

**Background:** This gene encodes a member of the SLC26A/SuIP transporter family. The protein functions as a molecular motor in motile outer hair cells (OHCs) of the cochlea, inducing changes in cell length that act to amplify sound levels. The transmembrane protein is an incomplete anion transporter, and does not allow anions to cross the cell membrane but instead undergoes a conformational change in response to changes in intracellular Cl<sup>-</sup> levels that results in a change in cell length. The protein functions at microsecond rates, which is several orders of magnitude faster than conventional molecular motor proteins. Mutations in this gene are potential candidates for causing neurosensory deafness. Multiple transcript variants encoding different isoforms have been found for this gene.[provided by RefSeq, Nov 2009]

**Immunogen:** Synthetic peptide of human SLC26A5

**Applications:** ELISA, IHC

**Recommended Dilutions:** IHC: 50-100; ELISA: 5000-10000

**Host Species:** Rabbit

**Clonality:** Rabbit Polyclonal

**Isotype:** Immunogen-specific rabbit IgG

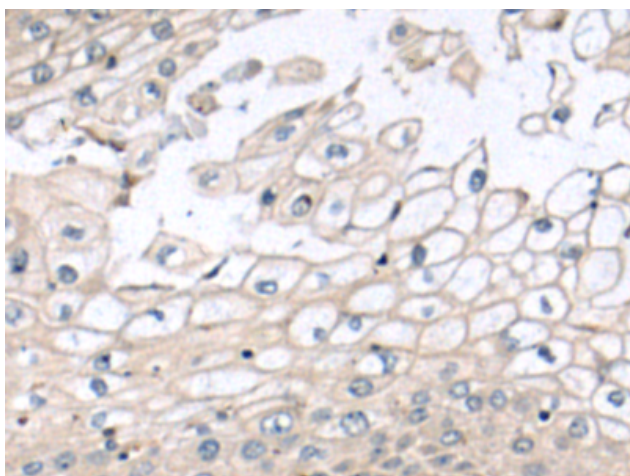
**Purification:** Antigen affinity purification

**Species Reactivity:** Human, Mouse, Rat

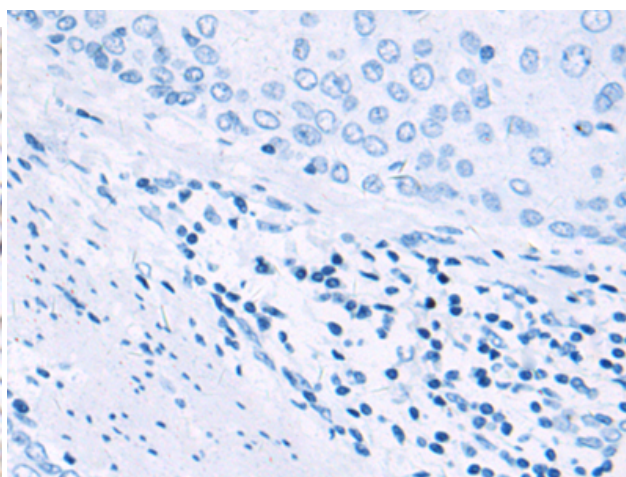
**Constituents:** PBS (without Mg<sup>2+</sup> and Ca<sup>2+</sup>), pH 7.4, 150 mM NaCl, 0.05% Sodium Azide and 40% glycerol

**Research Areas:** Neuroscience

**Storage & Shipping:** Store at -20°C. Avoid repeated freezing and thawing



Immunohistochemistry analysis of paraffin embedded Human esophagus cancer tissue using 220925(SLC26A5 Antibody) at a dilution of 1/50(Cell membrane).



In comparison with the IHC on the left, the same paraffin-embedded Human esophagus cancer tissue is first treated with the synthetic peptide and then with 220925(Anti-SLC26A5 Antibody) at dilution 1/50.



# Product Description

Pioneering GTPase and Oncogene Product Development since 2010

---