

## SLC25A27 RABBIT PAB

**Cat.#:** S215738

**Product Name:** Anti-SLC25A27 Rabbit Polyclonal Antibody

**Synonyms:** UCP4

**UNIPROT ID:** O95847 (Gene Accession - NP\_004268 )

**Background:** Mitochondrial uncoupling proteins (UCP) are members of the larger family of mitochondrial anion carrier proteins (MACP). UCPs separate oxidative phosphorylation from ATP synthesis with energy dissipated as heat, also referred to as the mitochondrial proton leak. UCPs facilitate the transfer of anions from the inner to the outer mitochondrial membrane and the return transfer of protons from the outer to the inner mitochondrial membrane. They also reduce the mitochondrial membrane potential in mammalian cells. Tissue specificity occurs for the different UCPs and the exact methods of how UCPs transfer H<sup>+</sup>/OH<sup>-</sup> are not known. UCPs contain the three homologous protein domains of MACPs. Transcripts of this gene are only detected in brain tissue and are specifically modulated by various environmental conditions. Alternative splicing results in multiple transcript variants.

**Immunogen:** Synthetic peptide of human SLC25A27

**Applications:** ELISA, WB, IHC

**Recommended Dilutions:** IHC: 20-100;WB: 500-2000;ELISA: 5000-10000

**Host Species:** Rabbit

**Clonality:** Rabbit Polyclonal

**Isotype:** Immunogen-specific rabbit IgG

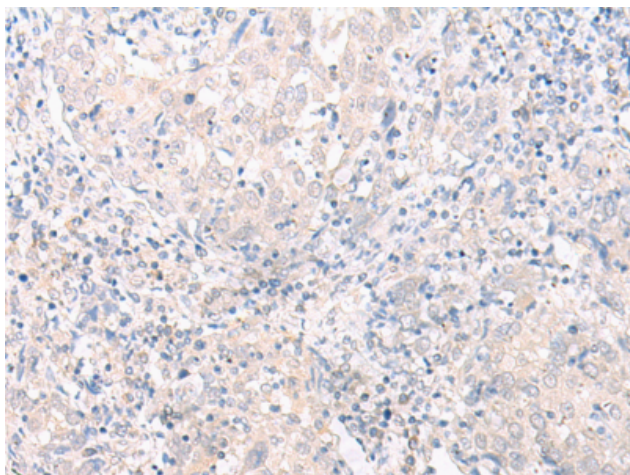
**Purification:** Antigen affinity purification

**Species Reactivity:** Human, Mouse, Rat

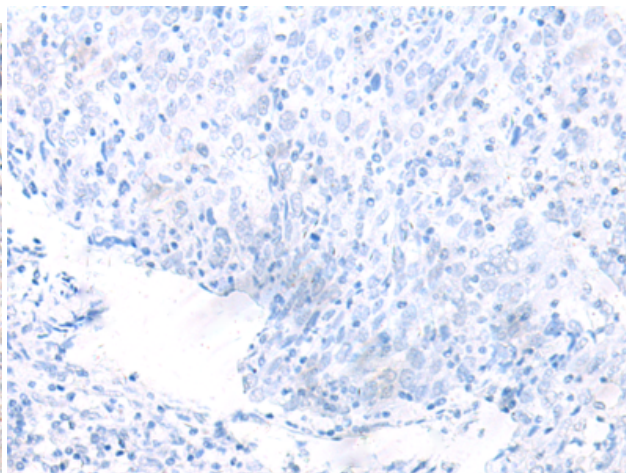
**Constituents:** PBS (without Mg<sup>2+</sup> and Ca<sup>2+</sup>), pH 7.4, 150 mM NaCl, 0.05% Sodium Azide and 40% glycerol

**Research Areas:** Metabolism

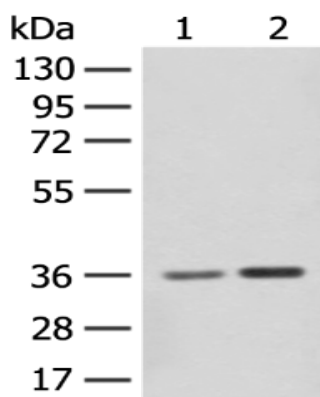
**Storage & Shipping:** Store at -20°C. Avoid repeated freezing and thawing



Immunohistochemistry analysis of paraffin embedded Human cervical cancer tissue using 215738 (SLC25A27 Antibody) at a dilution of 1/30 (Cell membrane).



In comparison with the IHC on the left, the same paraffin-embedded Human cervical cancer tissue is first treated with the synthetic peptide and then with 215738 (Anti-SLC25A27 Antibody) at dilution 1/30.



Gel: 8% SDS-PAGE, Lysate: 40  $\mu$ g;  
 Lane 1-2: Mouse brain tissue and Rat brain tissue lysates;  
 Primary antibody: 215738 (SLC25A27 Antibody) at dilution 1/350;  
 Secondary antibody: Goat anti rabbit IgG at 1/8000 dilution;  
 Exposure time: 2 minutes