

## SLC25A21 RABBIT PAB

**Cat.#:** S221296

**Product Name:** Anti-SLC25A21 Rabbit Polyclonal Antibody

**Synonyms:** ODC; ODC1

**UNIPROT ID:** Q9BQT8 (Gene Accession - NP\_085134 )

**Background:** SLC25A21 is a homolog of the *S. cerevisiae* ODC proteins, mitochondrial carriers that transport C5–C7 oxodicarboxylates across inner mitochondrial membranes. One of the species transported by ODC is 2-oxoadipate, a common intermediate in the catabolism of lysine, tryptophan, and hydroxylysine in mammals. Within mitochondria, 2-oxoadipate is converted into acetyl-CoA.

**Immunogen:** Synthetic peptide of human SLC25A21

**Applications:** ELISA, IHC

**Recommended Dilutions:** IHC: 20–100; ELISA: 5000–10000

**Host Species:** Rabbit

**Clonality:** Rabbit Polyclonal

**Isotype:** Immunogen-specific rabbit IgG

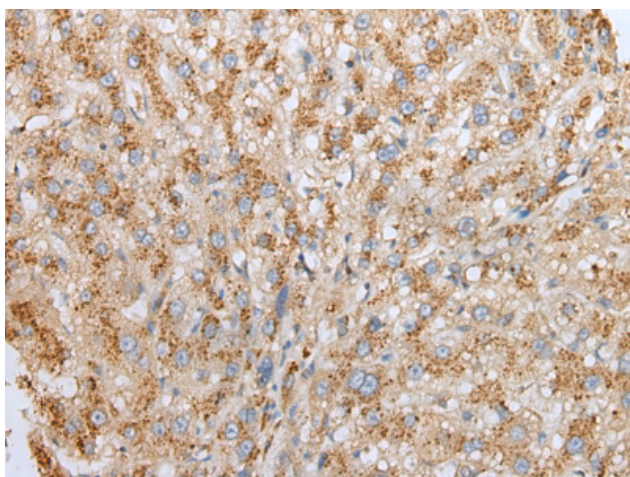
**Purification:** Antigen affinity purification

**Species Reactivity:** Human

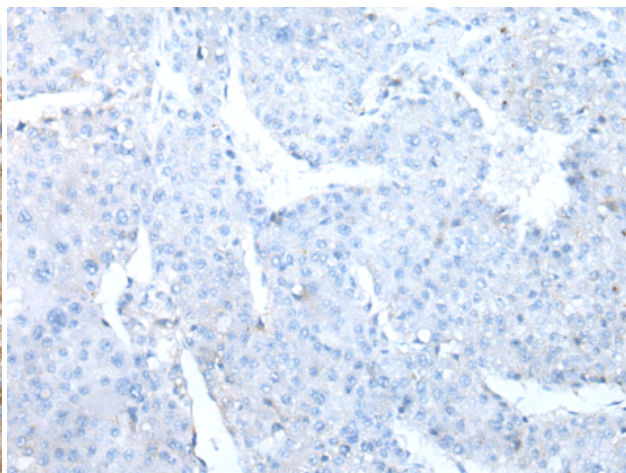
**Constituents:** PBS (without Mg<sup>2+</sup> and Ca<sup>2+</sup>), pH 7.4, 150 mM NaCl, 0.05% Sodium Azide and 40% glycerol

**Research Areas:** Metabolism

**Storage & Shipping:** Store at -20°C. Avoid repeated freezing and thawing



Immunohistochemistry analysis of paraffin embedded Human liver cancer tissue using 221296(SLC25A21 Antibody) at a dilution of 1/25(Cytoplasm).



In comparison with the IHC on the left, the same paraffin-embedded Human liver cancer tissue is first treated with the synthetic peptide and then with 221296(Anti-SLC25A21 Antibody) at dilution 1/25.