

## SLC25A11 RABBIT PAB

**Cat.#:** S210588

**Product Name:** Anti-SLC25A11 Rabbit Polyclonal Antibody

**Synonyms:** OGC, SLC20A4

**UNIPROT ID:** Q02978 (Gene Accession - BC006508 )

**Background:** The oxoglutarate/malate carrier transports 2-oxoglutarate across the inner membranes of mitochondria in an electroneutral exchange for malate or other dicarboxylic acids, and plays an important role in several metabolic processes, contains the malate-aspartate shuttle, the oxoglutarate/isocitrate shuttle, in gluconeogenesis from lactate, and in nitrogen metabolism.

**Immunogen:** Fusion protein of human SLC25A11

**Applications:** ELISA, WB, IHC

**Recommended Dilutions:** IHC: 25-100;WB: 500-2000;ELISA: 1000-5000

**Host Species:** Rabbit

**Clonality:** Rabbit Polyclonal

**Isotype:** Immunogen-specific rabbit IgG

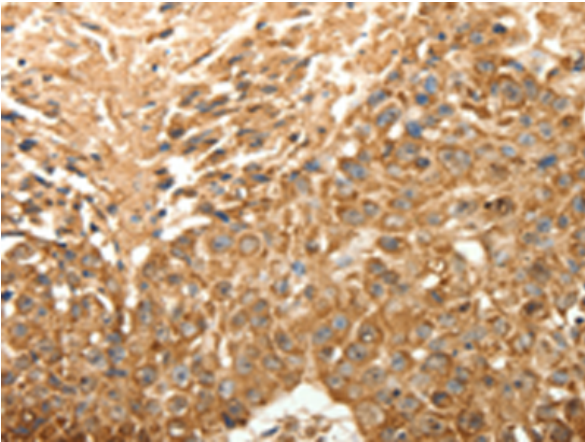
**Purification:** Antigen affinity purification

**Species Reactivity:** Human, Mouse, Rat

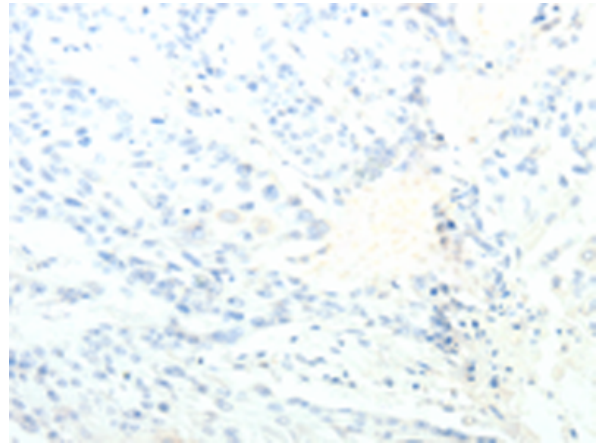
**Constituents:** PBS (without Mg<sup>2+</sup> and Ca<sup>2+</sup>), pH 7.4, 150 mM NaCl, 0.05% Sodium Azide and 40% glycerol

**Research Areas:** Metabolism, Cancer

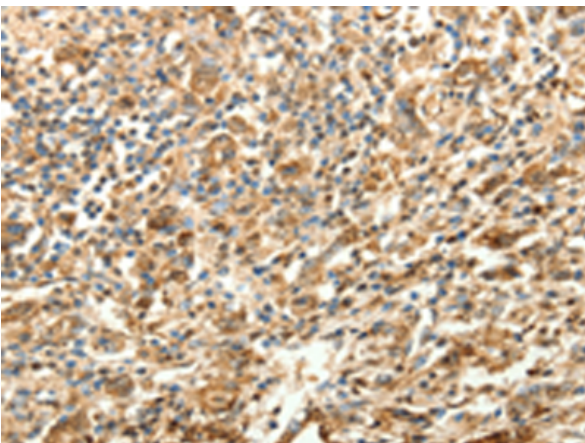
**Storage & Shipping:** Store at -20°C. Avoid repeated freezing and thawing



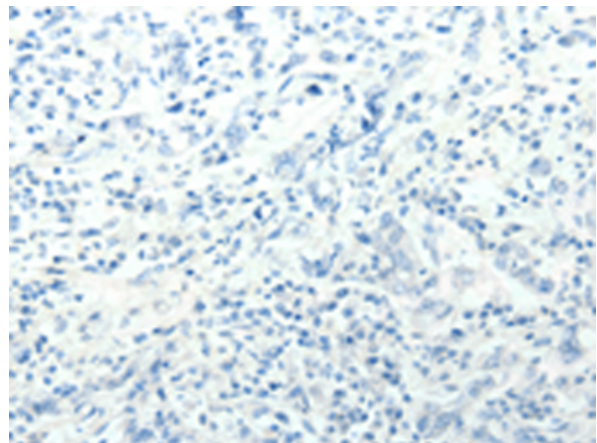
Immunohistochemistry analysis of paraffin embedded Human esophagus cancer tissue using 210588(SLC25A11 Antibody) at a dilution of 1/30(Cytoplasm).



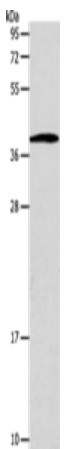
In comparison with the IHC on the left, the same paraffin-embedded Human esophagus cancer tissue is first treated with the fusion protein and then with 210588(Anti-SLC25A11 Antibody) at dilution 1/30.



The image on the left is immunohistochemistry of paraffin-embedded Human gastric cancer tissue using 210588(Anti-SLC25A11 Antibody) at a dilution of 1/30.



In comparison with the IHC on the left, the same paraffin-embedded Human gastric cancer tissue is first treated with fusion protein and then with D121231(Anti-SLC25A11 Antibody) at dilution 1/30.



Gel: 12%SDS-PAGE, Lysate: 40 µg;  
Lane: Human lymphoma tissue;  
Primary antibody: 210588(SLC25A11 Antibody) at dilution 1/600;  
Secondary antibody: Goat anti rabbit IgG at 1/8000 dilution;  
Exposure time: 20 seconds



# Product Description

Pioneering GTPase and Oncogene Product Development since 2010

---