

## SLC24A5 RABBIT PAB

**Cat.#:** S220922

**Product Name:** Anti-SLC24A5 Rabbit Polyclonal Antibody

**Synonyms:** JSX; OCA6; NCKX5; SHEP4

**UNIPROT ID:** Q71RS6 (Gene Accession - NP\_995322 )

**Background:** This gene is a member of the potassium-dependent sodium/calcium exchanger family and encodes an intracellular membrane protein with 2 large hydrophilic loops and 2 sets of multiple transmembrane-spanning segments. Sequence variation in this gene has been associated with differences in skin pigmentation.

**Immunogen:** Synthetic peptide of human SLC24A5

**Applications:** ELISA, IHC

**Recommended Dilutions:** IHC: 35-200; ELISA: 5000-10000

**Host Species:** Rabbit

**Clonality:** Rabbit Polyclonal

**Isotype:** Immunogen-specific rabbit IgG

**Purification:** Antigen affinity purification

**Species Reactivity:** Human

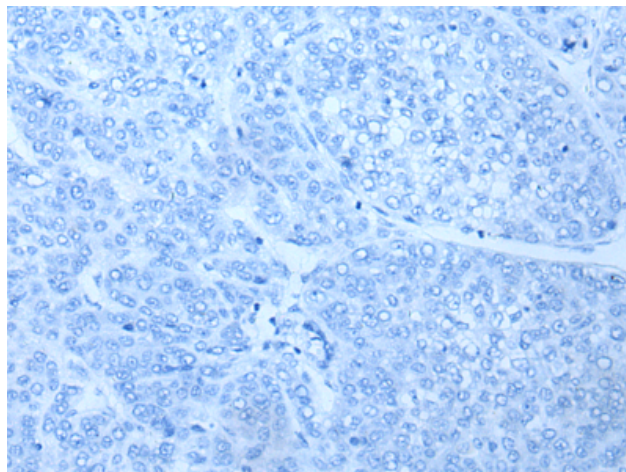
**Constituents:** PBS (without Mg<sup>2+</sup> and Ca<sup>2+</sup>), pH 7.4, 150 mM NaCl, 0.05% Sodium Azide and 40% glycerol

**Research Areas:** Metabolism

**Storage & Shipping:** Store at -20°C. Avoid repeated freezing and thawing



Immunohistochemistry analysis of paraffin embedded Human liver cancer tissue using 220922(SLC24A5 Antibody) at a dilution of 1/50(Cell membrane).



In comparison with the IHC on the left, the same paraffin-embedded Human liver cancer tissue is first treated with the synthetic peptide and then with 220922(Anti-SLC24A5 Antibody) at dilution 1/50.