

## SLC24A4 RABBIT PAB

**Cat.#:** S220921

**Product Name:** Anti-SLC24A4 Rabbit Polyclonal Antibody

**Synonyms:** AI2A5; NCKX4; SHEP6; SLC24A2

**UNIPROT ID:** Q8NFF2 (Gene Accession - NP\_705932 )

**Background:** This gene encodes a member of the potassium-dependent sodium/calcium exchanger protein family. Alternative splicing results in multiple transcript variants. Transports 1 Ca<sup>2+</sup> and 1 K<sup>+</sup> in exchange for 4 Na<sup>+</sup>. Controls the rapid response termination and proper regulation of adaptation in olfactory sensory neurons (OSNs) which subsequently influences how odor information is encoded and perceived.

**Immunogen:** Synthetic peptide of human SLC24A4

**Applications:** ELISA, IHC

**Recommended Dilutions:** IHC: 25-100; ELISA: 2000-5000

**Host Species:** Rabbit

**Clonality:** Rabbit Polyclonal

**Isotype:** Immunogen-specific rabbit IgG

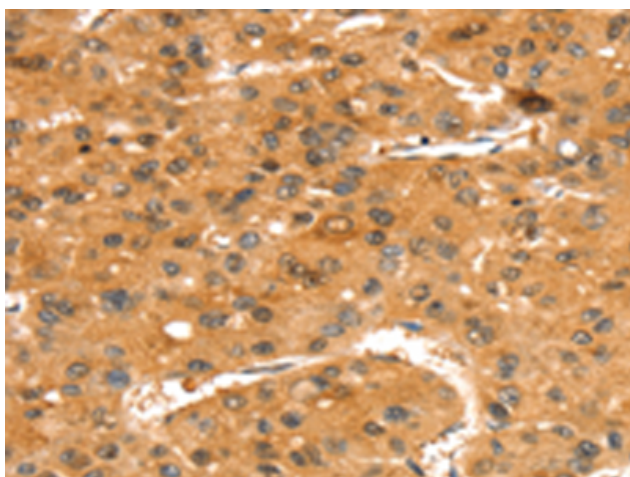
**Purification:** Antigen affinity purification

**Species Reactivity:** Human

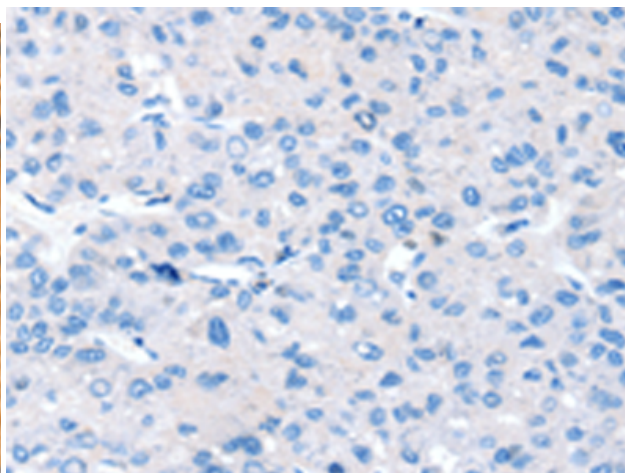
**Constituents:** PBS (without Mg<sup>2+</sup> and Ca<sup>2+</sup>), pH 7.4, 150 mM NaCl, 0.05% Sodium Azide and 40% glycerol

**Research Areas:** Metabolism

**Storage & Shipping:** Store at -20°C. Avoid repeated freezing and thawing



Immunohistochemistry analysis of paraffin embedded Human liver cancer tissue using 220921(SLC24A4 Antibody) at a dilution of 1/35(Cytoplasm and Cell membrane).



In comparison with the IHC on the left, the same paraffin-embedded Human liver cancer tissue is first treated with the synthetic peptide and then with 220921(Anti-SLC24A4 Antibody) at dilution 1/35.