

## SLC22A8 RABBIT PAB

**Cat.#:** S220157

**Product Name:** Anti-SLC22A8 Rabbit Polyclonal Antibody

**Synonyms:** OAT3

**UNIPROT ID:** Q8TCC7 (Gene Accession - NP\_004245 )

**Background:** This gene encodes a protein involved in the sodium-independent transport and excretion of organic anions, some of which are potentially toxic. The encoded protein is an integral membrane protein and appears to be localized to the basolateral membrane of the kidney. Multiple alternatively spliced transcript variants that encode different protein isoforms have been described for this gene.

**Immunogen:** Synthetic peptide of human SLC22A8

**Applications:** ELISA, IHC

**Recommended Dilutions:** IHC: 50-200; ELISA: 5000-10000

**Host Species:** Rabbit

**Clonality:** Rabbit Polyclonal

**Isotype:** Immunogen-specific rabbit IgG

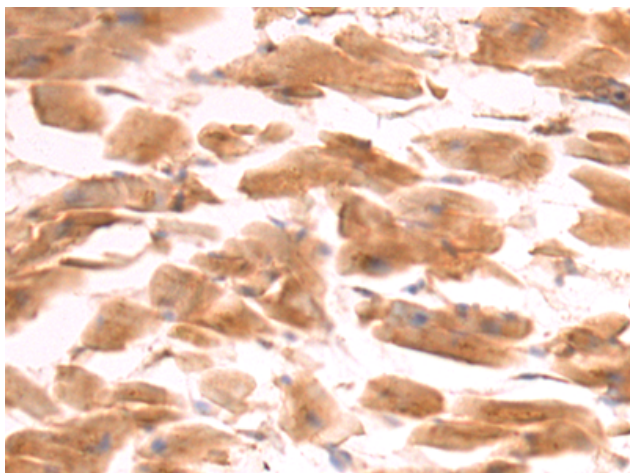
**Purification:** Antigen affinity purification

**Species Reactivity:** Human


**Constituents:** PBS (without Mg<sup>2+</sup> and Ca<sup>2+</sup>), pH 7.4, 150 mM NaCl, 0.05% Sodium Azide and 40% glycerol

**Research Areas:** Metabolism

**Storage & Shipping:** Store at -20°C. Avoid repeated freezing and thawing



Immunohistochemistry analysis of paraffin embedded Human kidney tissue using 220157(SLC22A8 Antibody) at a dilution of 1/50(Cytoplasm).

 In comparison with the IHC on the left, the same paraffin-embedded Human kidney tissue is first treated with the synthetic peptide and then with 220157(Anti-SLC22A8 Antibody) at dilution 1/50.