

SLC22A7 RABBIT PAB

Cat.#: S222387

Product Name: Anti-SLC22A7 Rabbit Polyclonal Antibody

Synonyms: NLT; OAT2; hOAT11

UNIPROT ID: Q9Y694 (Gene Accession - NP_696961)

Background: The protein encoded by this gene is involved in the sodium-independent transport and excretion of organic anions, some of which are potentially toxic. The encoded protein is an integral membrane protein and appears to be localized to the basolateral membrane of the kidney. Alternatively spliced transcript variants encoding different isoforms have been described.

Immunogen: Synthetic peptide of human SLC22A7

Applications: ELISA, IHC

Recommended Dilutions: IHC: 100-200; ELISA: 5000-10000

Host Species: Rabbit

Clonality: Rabbit Polyclonal

Isotype: Immunogen-specific rabbit IgG

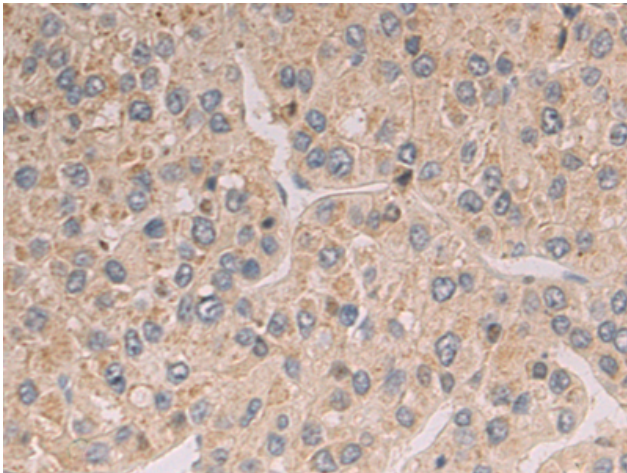
Purification: Antigen affinity purification

Species Reactivity: Human, Rat

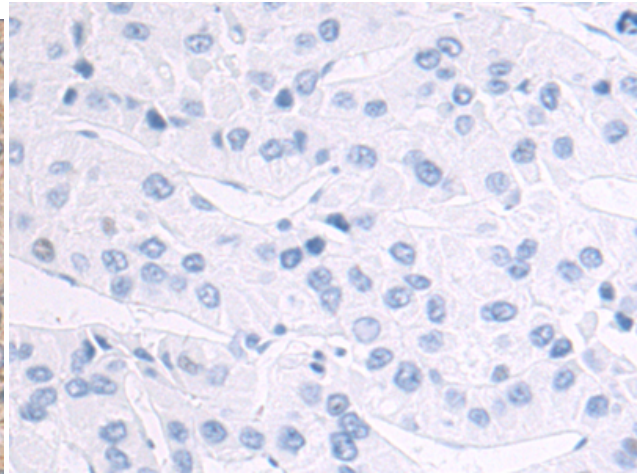
Constituents: PBS (without Mg²⁺ and Ca²⁺), pH 7.4, 150 mM NaCl, 0.05% Sodium Azide and 40% glycerol

Research Areas: Signal Transduction

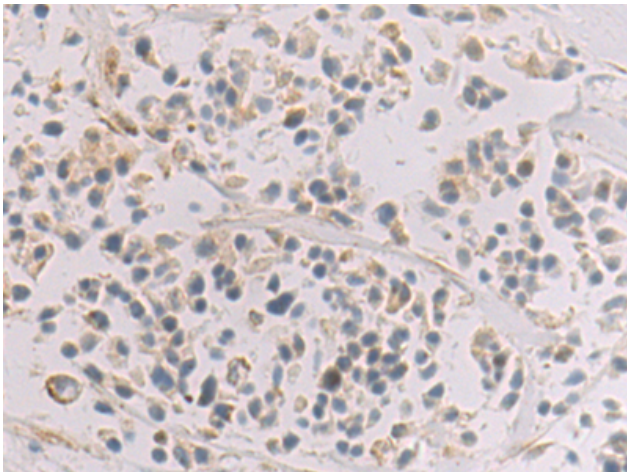
Storage & Shipping: Store at -20°C. Avoid repeated freezing and thawing



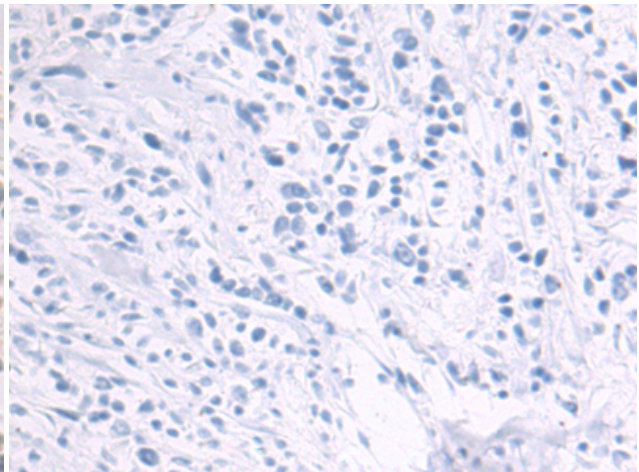
Immunohistochemistry analysis of paraffin embedded Human liver cancer tissue using 222387 (SLC22A7 Antibody) at a dilution of 1/100 (Cytoplasm).



In comparison with the IHC on the left, the same paraffin-embedded Human liver cancer tissue is first treated with the synthetic peptide and then with 222387 (Anti-SLC22A7 Antibody) at dilution 1/100.



The image on the left is immunohistochemistry of paraffin-embedded Human breast cancer tissue using 222387 (Anti-SLC22A7 Antibody) at a dilution of 1/100.



In comparison with the IHC on the left, the same paraffin-embedded Human breast cancer tissue is first treated with synthetic peptide and then with D264525 (Anti-SLC22A7 Antibody) at dilution 1/100.