

SLC22A3 RABBIT PAB

Cat.#: S220202

Product Name: Anti-SLC22A3 Rabbit Polyclonal Antibody

Synonyms: EMT; EMTH; OCT3

UNIPROT ID: O75751 (Gene Accession - NP_068812)

Background: Polyspecific organic cation transporters in the liver, kidney, intestine, and other organs are critical for elimination of many endogenous small organic cations as well as a wide array of drugs and environmental toxins. This gene is one of three similar cation transporter genes located in a cluster on chromosome 6. The encoded protein contains twelve putative transmembrane domains and is a plasma integral membrane protein.

Immunogen: Synthetic peptide of human SLC22A3

Applications: ELISA, WB, IHC

Recommended Dilutions: IHC: 50–200;WB: 500–2000;ELISA: 2000–5000

Host Species: Rabbit

Clonality: Rabbit Polyclonal

Isotype: Immunogen-specific rabbit IgG

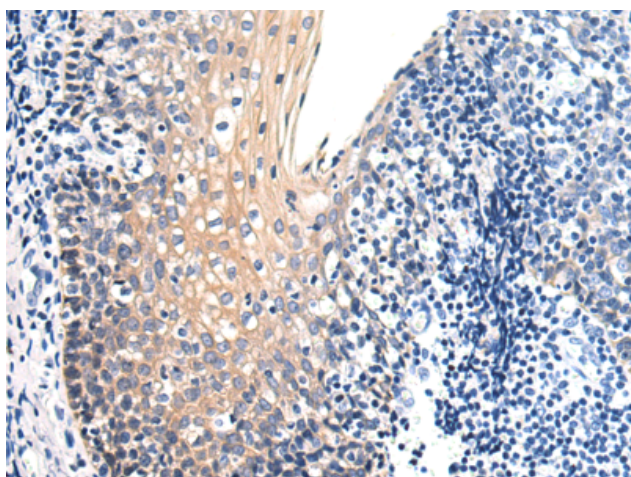
Purification: Antigen affinity purification

Species Reactivity: Human, Mouse, Rat

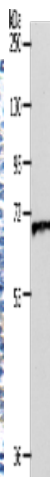
Constituents: PBS (without Mg²⁺ and Ca²⁺), pH 7.4, 150 mM NaCl, 0.05% Sodium Azide and 40% glycerol

Research Areas: Metabolism, Neuroscience

Storage & Shipping: Store at -20°C. Avoid repeated freezing and thawing



Immunohistochemistry analysis of paraffin-embedded Human tonsil tissue using 220202(SLC22A3 Antibody) at a dilution of 1/40(Cytoplasm and Cell membrane).



Gel: 10%SDS-PAGE, Lysate: 40 µg;
Lane: Human liver cancer tissue lysate;
Primary antibody: 220202(SLC22A3 Antibody) at dilution 1/600;
Secondary antibody: Goat anti rabbit IgG at 1/8000 dilution;
Exposure time: 1 minute