

## SLC22A12 RABBIT PAB

**Cat.#:** S220767

**Product Name:** Anti-SLC22A12 Rabbit Polyclonal Antibody

**Synonyms:** RST; OAT4L; URAT1

**UNIPROT ID:** Q96S37 (Gene Accession - NP\_001263255 )

**Background:** The protein encoded by this gene is a member of the organic anion transporter (OAT) family, and it acts as a urate transporter to regulate urate levels in blood. This protein is an integral membrane protein primarily found in epithelial cells of the proximal tubule of the kidney. An elevated level of serum urate, hyperuricemia, is associated with increased incidences of gout, and mutations in this gene cause renal hypouricemia type 1. Alternative splicing results in multiple transcript variants.

**Immunogen:** Synthetic peptide of human SLC22A12

**Applications:** ELISA, WB, IHC

**Recommended Dilutions:** IHC: 50-100;WB: 500-2000;ELISA: 5000-10000

**Host Species:** Rabbit

**Clonality:** Rabbit Polyclonal

**Isotype:** Immunogen-specific rabbit IgG

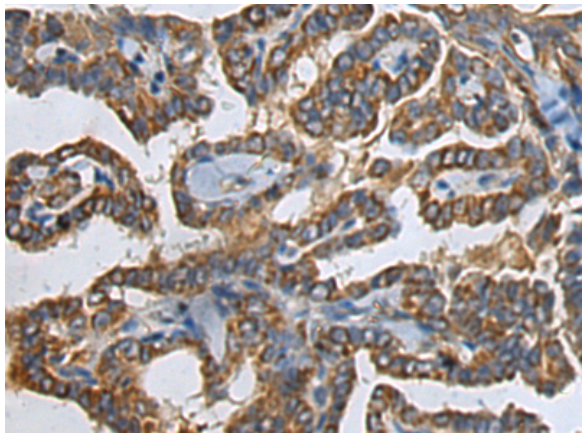
**Purification:** Antigen affinity purification

**Species Reactivity:** Human

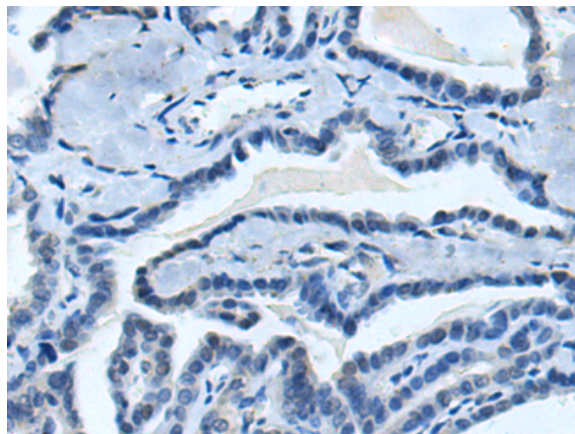
**Constituents:** PBS (without Mg<sup>2+</sup> and Ca<sup>2+</sup>), pH 7.4, 150 mM NaCl, 0.05% Sodium Azide and 40% glycerol

**Research Areas:** Metabolism

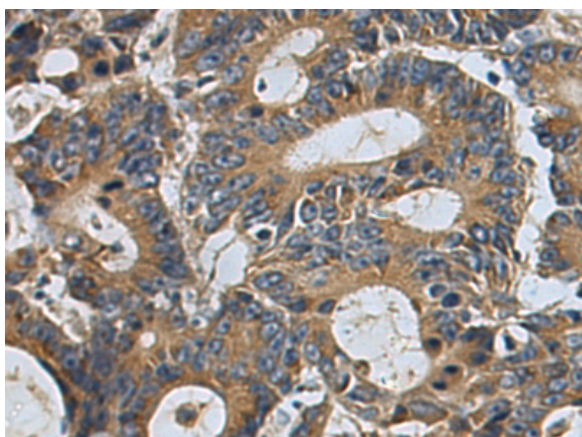
**Storage & Shipping:** Store at -20°C. Avoid repeated freezing and thawing



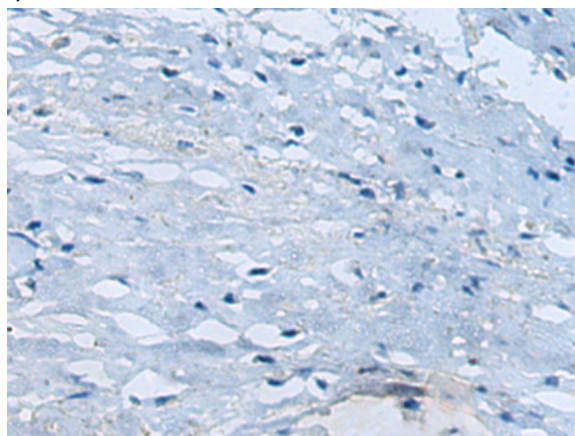
Immunohistochemistry analysis of paraffin embedded Human thyroid cancer tissue using 220767(SLC22A12 Antibody) at a dilution of 1/25(Cell membrane).



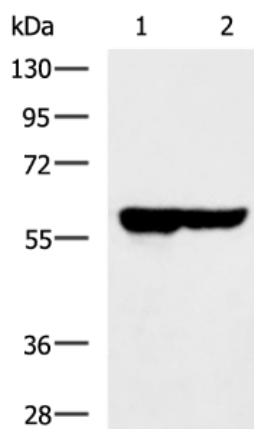
In comparison with the IHC on the left, the same paraffin-embedded Human thyroid cancer tissue is first treated with the synthetic peptide and then with 220767(Anti-SLC22A12 Antibody) at dilution 1/25.



The image on the left is immunohistochemistry of paraffin-embedded Human colorectal cancer tissue using 220767(Anti-SLC22A12 Antibody) at a dilution of 1/25.



In comparison with the IHC on the left, the same paraffin-embedded Human colorectal cancer tissue is first treated with synthetic peptide and then with D261983(Anti-SLC22A12 Antibody) at dilution 1/25.



Gel: 8%SDS-PAGE, Lysate: 40 µg;  
Lane 1-2: Hela and HepG2 cell lysates;  
Primary antibody: 220767(SLC22A12 Antibody) at dilution 1/700;  
Secondary antibody: HRP-conjugated Goat anti rabbit IgG at 1/5000 dilution;  
Exposure time: 1 minute



# Product Description

Pioneering GTPase and Oncogene Product Development since 2010

---