

## SLC1A7 RABBIT PAB

**Cat.#:** S220200

**Product Name:** Anti-SLC1A7 Rabbit Polyclonal Antibody

**Synonyms:** AAAT; EAAT5

**UNIPROT ID:** O00341 (Gene Accession - NP\_006662.3 )

**Background:** This gene belongs to the sodium:dicarboxylate (SDF) symporter (TC 2.A.23) family, SLC1A7 subfamily. As transporter of L-glutamate; the L-glutamate uptake is sodium- and voltage-dependent and chloride-independent. Its associated chloride conductance may participate in visual processing. It interacts with the PDZ domains of DLG4. Expressed primarily in retina. Detectable in liver, heart, muscle and brain.

**Immunogen:** Synthetic peptide of human SLC1A7

**Applications:** ELISA, IHC

**Recommended Dilutions:** IHC: 50-200; ELISA: 2000-5000

**Host Species:** Rabbit

**Clonality:** Rabbit Polyclonal

**Isotype:** Immunogen-specific rabbit IgG

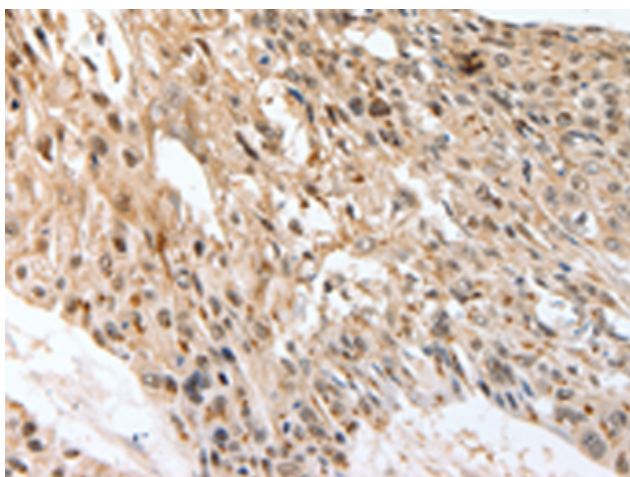
**Purification:** Antigen affinity purification

**Species Reactivity:** Human, Mouse

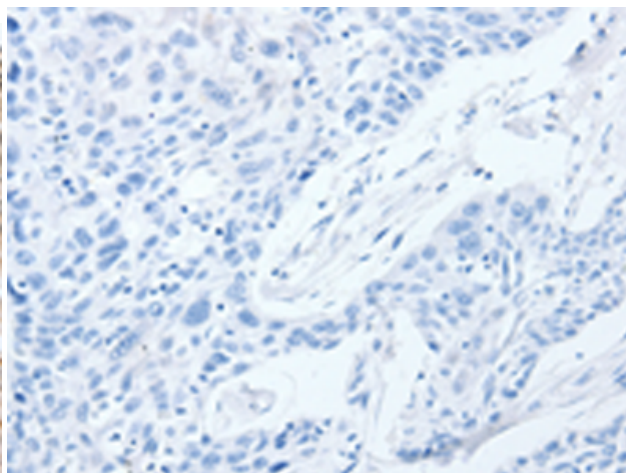
**Constituents:** PBS (without Mg<sup>2+</sup> and Ca<sup>2+</sup>), pH 7.4, 150 mM NaCl, 0.05% Sodium Azide and 40% glycerol

**Research Areas:** Metabolism

**Storage & Shipping:** Store at -20°C. Avoid repeated freezing and thawing



Immunohistochemistry analysis of paraffin embedded Human esophagus cancer tissue using 220200(SLC1A7 Antibody) at a dilution of 1/60(Cytoplasm).



In comparison with the IHC on the left, the same paraffin-embedded Human esophagus cancer tissue is first treated with the synthetic peptide and then with 220200(Anti-SLC1A7 Antibody) at dilution 1/60.