

SLC1A6 RABBIT PAB

Cat.#: S219753

Product Name: Anti-SLC1A6 Rabbit Polyclonal Antibody

Synonyms: EAAT4

UNIPROT ID: P48664 (Gene Accession - NP_005062)

Background: Excitatory Amino Acid Transporters (EAATs) are membrane-bound proteins that are localized in glial cells and pre-synaptic glutamatergic nerve endings. EAATs transport the excitatory neurotransmitters L-glutamate and D-aspartate, a process that is essential for terminating the postsynaptic action of glutamate. The re-uptake of amino acid neurotransmitters by EAAT proteins has been shown to protect neurons from excitotoxicity, which is caused by the accumulation of amino acid neurotransmitters. EAAT4 is an aspartate/glutamate transporter that is expressed predominantly in the cerebellum. The transport activity encoded by EAAT4 has high apparent affinity for L-aspartate and L-glutamate, and has a pharmacologic profile consistent with previously described cerebellar transport activities. EAAT5 is a glutamate transporter coupled to a chloride conductance which is expressed primarily in retina. Although EAAT5 shares the structural homologies of the EAAT family, a novel feature of the EAAT5 sequence is a carboxy-terminal motif previously identified in N-ethyl-D-aspartate receptors and potassium channels and shown to confer interactions with a family of synaptic proteins that promote ion channel clustering.

Immunogen: Synthetic peptide of human SLC1A6

Applications: ELISA, WB, IHC

Recommended Dilutions: IHC: 50-200;WB: 500-2000;ELISA: 2000-5000

Host Species: Rabbit

Clonality: Rabbit Polyclonal

Isotype: Immunogen-specific rabbit IgG

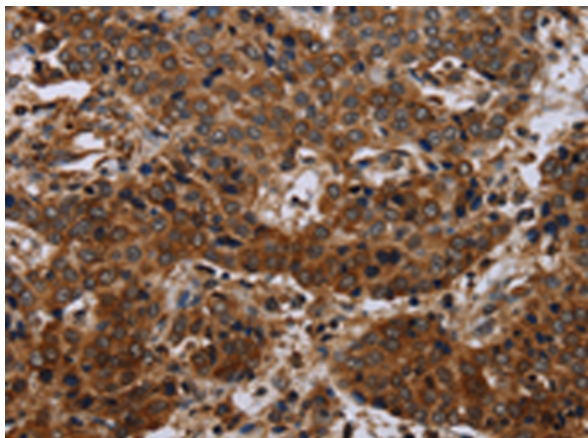
Purification: Antigen affinity purification

Species Reactivity: Human, Mouse, Rat

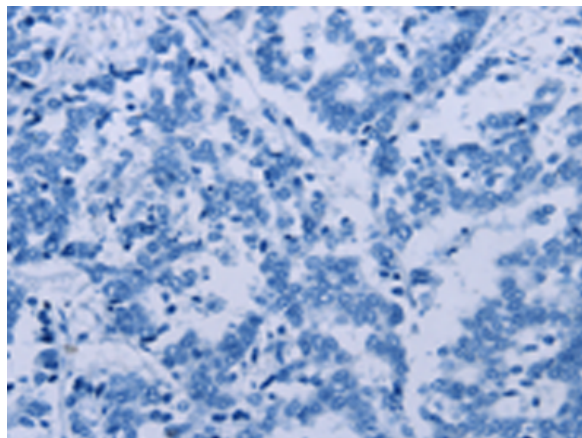
Constituents: PBS (without Mg²⁺ and Ca²⁺), pH 7.4, 150 mM NaCl, 0.05% Sodium Azide and 40% glycerol

Research Areas: Neuroscience

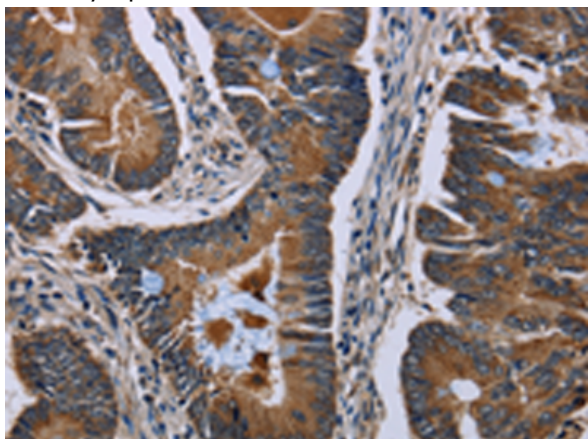
Storage & Shipping: Store at -20°C. Avoid repeated freezing and thawing



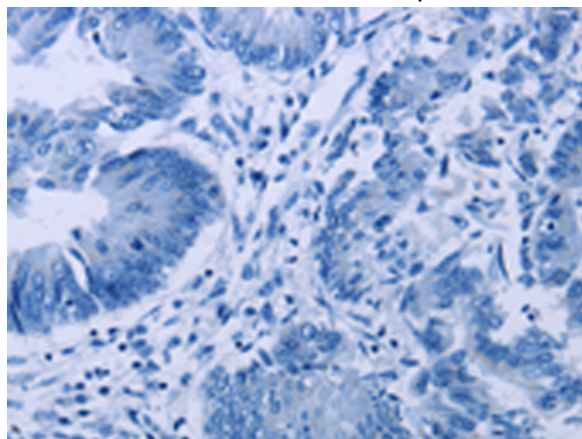
Immunohistochemistry analysis of paraffin embedded Human liver cancer tissue using 219753(SLC1A6 Antibody) at a dilution of 1/40(Cytoplasm).



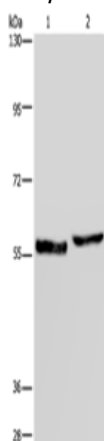
In comparison with the IHC on the left, the same paraffin-embedded Human liver cancer tissue is first treated with the synthetic peptide and then with 219753(Anti-SLC1A6 Antibody) at dilution 1/40.



The image on the left is immunohistochemistry of paraffin-embedded Human colon cancer tissue using 219753(Anti-SLC1A6 Antibody) at a dilution of 1/40.



In comparison with the IHC on the left, the same paraffin-embedded Human colon cancer tissue is first treated with synthetic peptide and then with D260282(Anti-SLC1A6 Antibody) at dilution 1/40.



Gel: 6%SDS-PAGE, Lysate: 40 µg;
 Lane 1-2: Human testis tissue, A375 cells;
 Primary antibody: 219753(SLC1A6 Antibody) at dilution 1/400;
 Secondary antibody: Goat anti rabbit IgG at 1/8000 dilution;
 Exposure time: 10 seconds



Product Description

Pioneering GTPase and Oncogene Product Development since 2010
