

## SLC1A4 RABBIT PAB

**Cat.#:** S219990

**Product Name:** Anti-SLC1A4 Rabbit Polyclonal Antibody

**Synonyms:** SATT, ASCT1

**UNIPROT ID:** P43007 (Gene Accession - NP\_003029 )

**Background:** Neutral amino acid transporter A is a protein that in humans is encoded by the SLC1A4 gene. In melanocytic cells SLC1A4 gene expression may be regulated by MITF. ASCT1 does not transport glutamate or aspartate but alanine, serine, cysteine, and threonine instead. ASCT1 transporter functions primarily as an amino acid exchanger. Transport is associated with a chloride channel activity that is thermodynamically uncoupled from amino acid transport.

**Immunogen:** Synthetic peptide of human SLC1A4

**Applications:** ELISA, WB, IHC

**Recommended Dilutions:** IHC: 100–300;WB: 1000–5000;ELISA: 2000–10000

**Host Species:** Rabbit

**Clonality:** Rabbit Polyclonal

**Isotype:** Immunogen-specific rabbit IgG

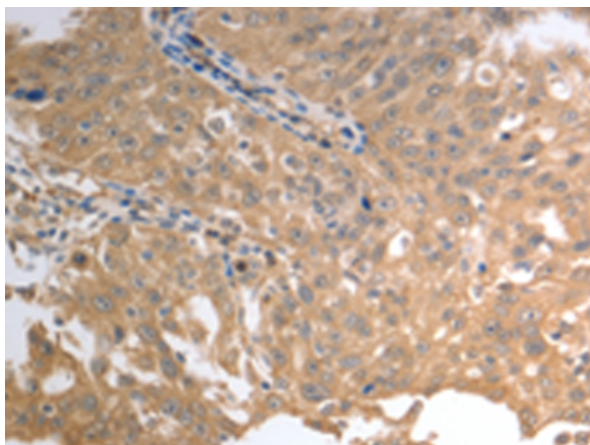
**Purification:** Antigen affinity purification

**Species Reactivity:** Human, Mouse

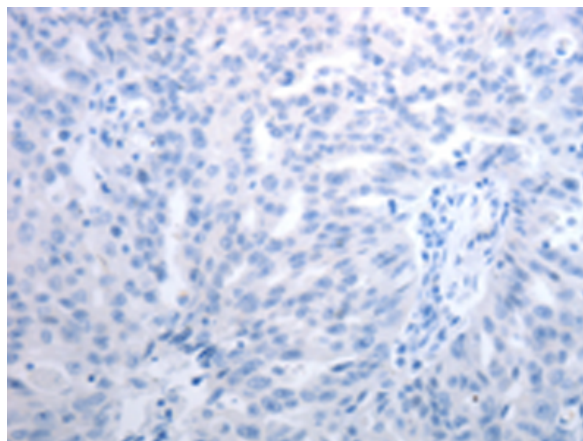
**Constituents:** PBS (without Mg<sup>2+</sup> and Ca<sup>2+</sup>), pH 7.4, 150 mM NaCl, 0.05% Sodium Azide and 40% glycerol

**Research Areas:** Metabolism

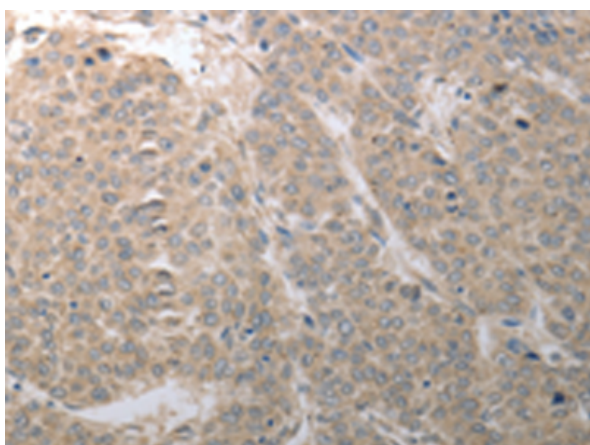
**Storage & Shipping:** Store at -20°C. Avoid repeated freezing and thawing



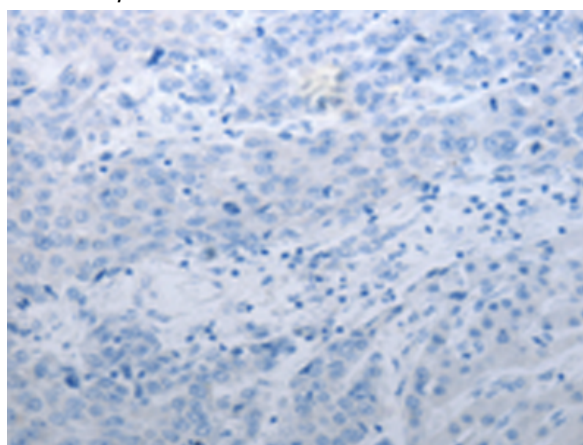
Immunohistochemistry analysis of paraffin embedded Human ovarian cancer tissue using 219990(SLC1A4 Antibody) at a dilution of 1/70(Cytoplasm).



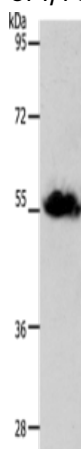
In comparison with the IHC on the left, the same paraffin-embedded Human ovarian cancer tissue is first treated with the synthetic peptide and then with 219990(Anti-SLC1A4 Antibody) at dilution 1/70.



The image on the left is immunohistochemistry of paraffin-embedded Human liver cancer tissue using 219990(Anti-SLC1A4 Antibody) at a dilution of 1/70.



In comparison with the IHC on the left, the same paraffin-embedded Human liver cancer tissue is first treated with synthetic peptide and then with D260739(Anti-SLC1A4 Antibody) at dilution 1/70.



Gel: 10+12%SDS-PAGE, Lysate: 30 µg;  
Lane: Human liver cancer tissue;  
Primary antibody: 219990(SLC1A4 Antibody) at dilution 1/1250;  
Secondary antibody: Goat anti rabbit IgG at 1/8000 dilution;  
Exposure time: 20 seconds



# Product Description

Pioneering GTPase and Oncogene Product Development since 2010

---