

## SLC18A1 RABBIT PAB

**Cat.#:** S213292

**Product Name:** Anti-SLC18A1 Rabbit Polyclonal Antibody

**Synonyms:** CGAT, VAT1, VMAT1

**UNIPROT ID:** P54219 (Gene Accession - NP\_001135797 )

**Background:** The vesicular monoamine transporter acts to accumulate cytosolic monoamines into vesicles, using the proton gradient maintained across the vesicular membrane. Its proper function is essential to the correct activity of the monoaminergic systems that have been implicated in several human neuropsychiatric disorders. The transporter is a site of action of important drugs, including reserpine and tetrabenazine.

**Immunogen:** Synthetic peptide of human SLC18A1

**Applications:** ELISA, WB, IHC

**Recommended Dilutions:** IHC: Oct-50;WB: 500-2000;ELISA: 2000-20000

**Host Species:** Rabbit

**Clonality:** Rabbit Polyclonal

**Isotype:** Immunogen-specific rabbit IgG

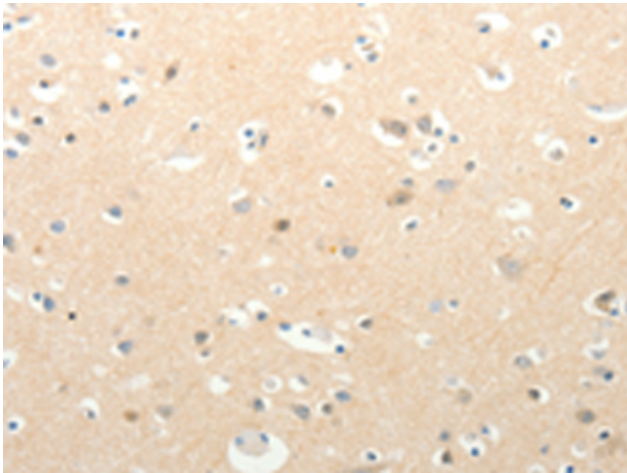
**Purification:** Antigen affinity purification

**Species Reactivity:** Human

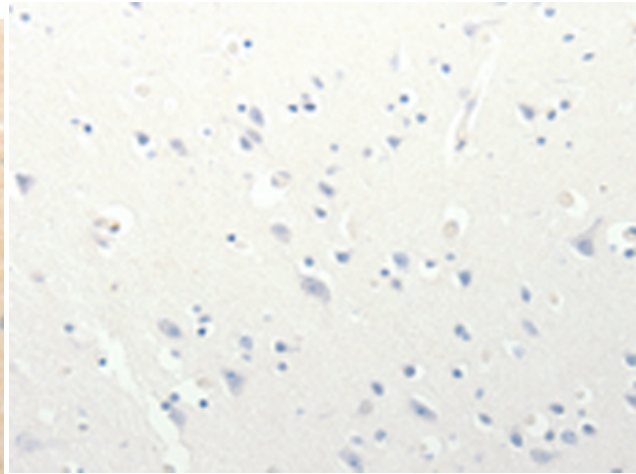
**Constituents:** PBS (without Mg<sup>2+</sup> and Ca<sup>2+</sup>), pH 7.4, 150 mM NaCl, 0.05% Sodium Azide and 40% glycerol

**Research Areas:** Neuroscience

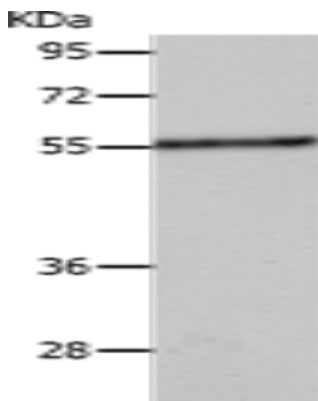
**Storage & Shipping:** Store at -20°C. Avoid repeated freezing and thawing



Immunohistochemistry analysis of paraffin embedded Human brain tissue using 213292(SLC18A1 Antibody) at a dilution of 1/13(Cytoplasm).



In comparison with the IHC on the left, the same paraffin-embedded Human brain tissue is first treated with the synthetic peptide and then with 213292(Anti-SLC18A1 Antibody) at dilution 1/13.



Gel: 10%SDS-PAGE, Lysate: 40 µg;  
Lane: A549 cells;  
Primary antibody: 213292(SLC18A1 Antibody) at dilution 1/400;  
Secondary antibody: Goat anti rabbit IgG at 1/8000 dilution;  
Exposure time: 45 seconds