

## SLC16A8 RABBIT PAB

**Cat.#:** S220916

**Product Name:** Anti-SLC16A8 Rabbit Polyclonal Antibody

**Synonyms:** MCT3; REMP

**UNIPROT ID:** O95907 (Gene Accession - NP\_037488 )

**Background:** SLC16A8 is a member of a family of proton-coupled monocarboxylate transporters that mediate lactate transport across cell membranes. Proton-linked monocarboxylate transporter. Catalyzes the rapid transport across the plasma membrane of many monocarboxylates such as lactate, pyruvate, branched-chain oxo acids derived from leucine, valine and isoleucine, and the ketone bodies acetoacetate, beta-hydroxybutyrate and acetate.

**Immunogen:** Synthetic peptide of human SLC16A8

**Applications:** ELISA, WB, IHC

**Recommended Dilutions:** IHC: 40-150;WB: 500-2000;ELISA: 2000-5000

**Host Species:** Rabbit

**Clonality:** Rabbit Polyclonal

**Isotype:** Immunogen-specific rabbit IgG

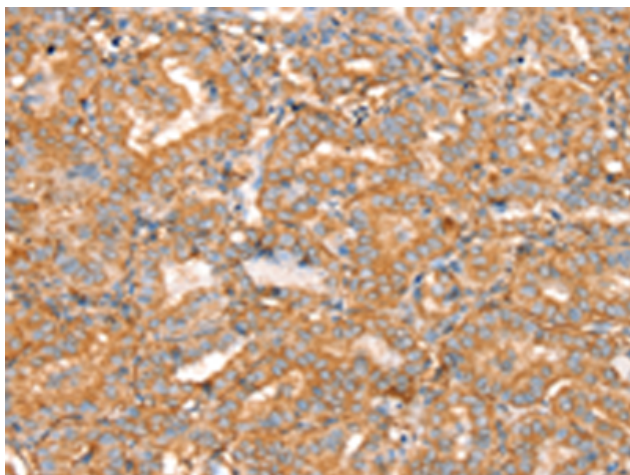
**Purification:** Antigen affinity purification

**Species Reactivity:** Human

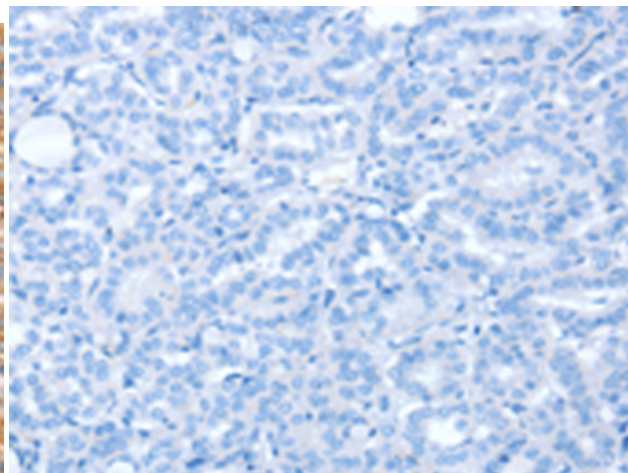
**Constituents:** PBS (without Mg<sup>2+</sup> and Ca<sup>2+</sup>), pH 7.4, 150 mM NaCl, 0.05% Sodium Azide and 40% glycerol

**Research Areas:** Metabolism, Cancer

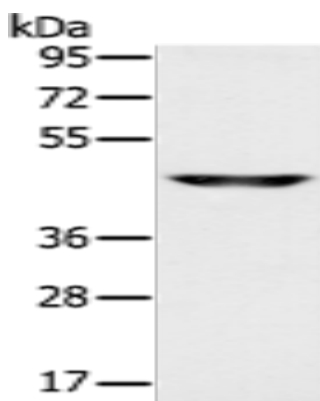
**Storage & Shipping:** Store at -20°C. Avoid repeated freezing and thawing



Immunohistochemistry analysis of paraffin embedded Human thyroid cancer tissue using 220916(SLC16A8 Antibody) at a dilution of 1/40(Cytoplasm or Cell membrane).



In comparison with the IHC on the left, the same paraffin-embedded Human thyroid cancer tissue is first treated with the synthetic peptide and then with 220916(Anti-SLC16A8 Antibody) at dilution 1/40.



Gel: 8%SDS-PAGE, Lysate: 40  $\mu$ g;  
Lane: Human fetal brain tissue;  
Primary antibody: 220916(SLC16A8 Antibody) at dilution 1/200;  
Secondary antibody: Goat anti rabbit IgG at 1/8000 dilution;  
Exposure time: 1 minute