

SLC16A6 RABBIT PAB

Cat.#: S221380

Product Name: Anti-SLC16A6 Rabbit Polyclonal Antibody

Synonyms: MCT6; MCT7

UNIPROT ID: O15403 (Gene Accession - NP_004685)

Background: Proton-linked monocarboxylate transporter. Catalyzes the rapid transport across the plasma membrane of many monocarboxylates such as lactate, pyruvate, branched-chain oxo acids derived from leucine, valine and isoleucine, and the ketone bodies acetoacetate, beta-hydroxybutyrate and acetate.

Immunogen: Synthetic peptide of human SLC16A6

Applications: ELISA, IHC

Recommended Dilutions: IHC: 50-100; ELISA: 5000-10000

Host Species: Rabbit

Clonality: Rabbit Polyclonal

Isotype: Immunogen-specific rabbit IgG

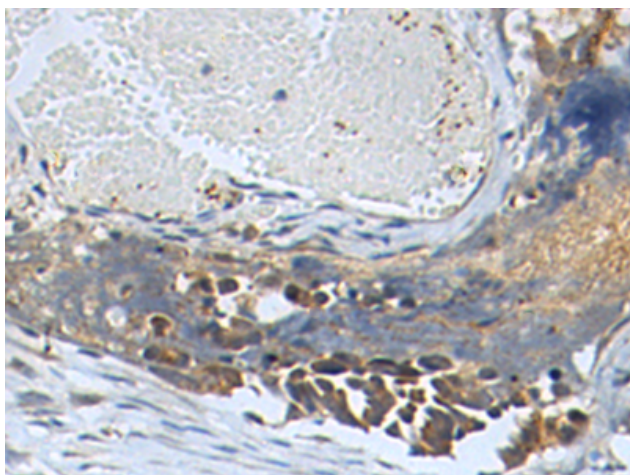
Purification: Antigen affinity purification

Species Reactivity: Human

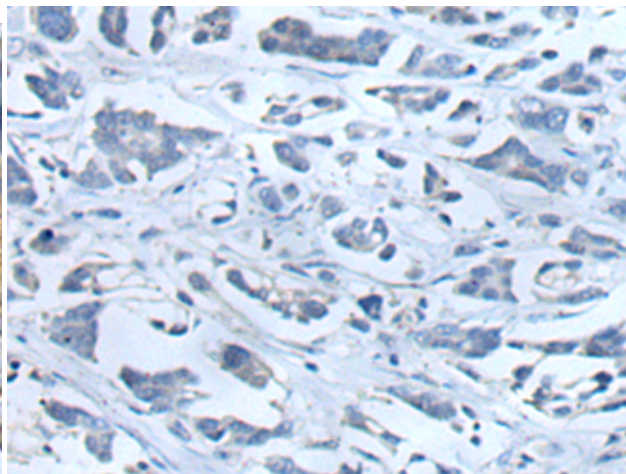
Constituents: PBS (without Mg²⁺ and Ca²⁺), pH 7.4, 150 mM NaCl, 0.05% Sodium Azide and 40% glycerol

Research Areas: Signal Transduction

Storage & Shipping: Store at -20°C. Avoid repeated freezing and thawing



Immunohistochemistry analysis of paraffin embedded Human colorectal cancer tissue using 221380 (SLC16A6 Antibody) at a dilution of 1/45 (Cytoplasm).



In comparison with the IHC on the left, the same paraffin-embedded Human colorectal cancer tissue is first treated with the synthetic peptide and then with 221380 (Anti-SLC16A6 Antibody) at dilution 1/45.