

SLC16A11 RABBIT PAB

Cat.#: S220918

Product Name: Anti-SLC16A11 Rabbit Polyclonal Antibody

Synonyms: MCT11; MCT 11

UNIPROT ID: Q8NCK7 (Gene Accession - NP_699188)

Background: Enables pyruvate transmembrane transporter activity. Involved in lipid metabolic process. Located in endoplasmic reticulum membrane and plasma membrane.

Immunogen: Synthetic peptide of human SLC16A11

Applications: ELISA, WB, IHC

Recommended Dilutions: IHC: 50-200;WB: 1000-5000;ELISA: 5000-10000

Host Species: Rabbit

Clonality: Rabbit Polyclonal

Isotype: Immunogen-specific rabbit IgG

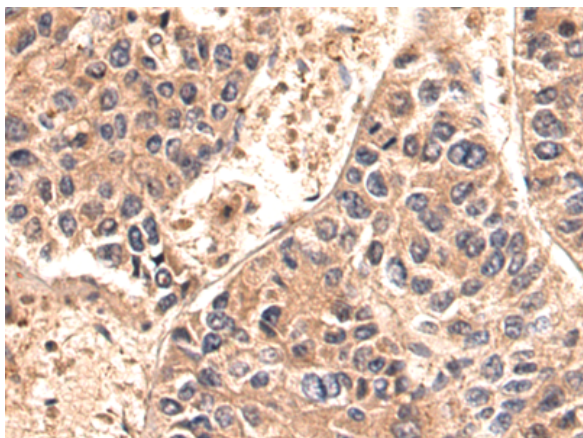
Purification: Antigen affinity purification

Species Reactivity: Human, Mouse

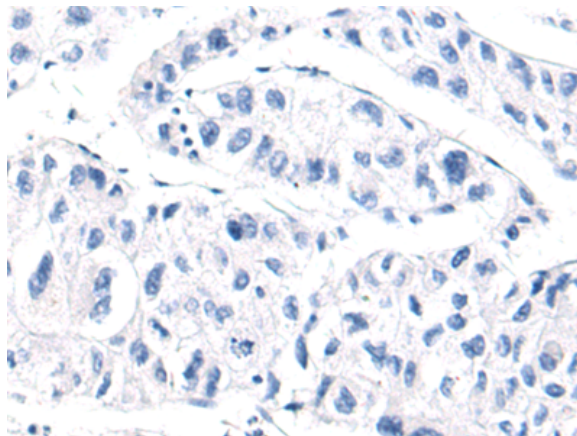
Constituents: PBS (without Mg²⁺ and Ca²⁺), pH 7.4, 150 mM NaCl, 0.05% Sodium Azide and 40% glycerol

Research Areas: Metabolism

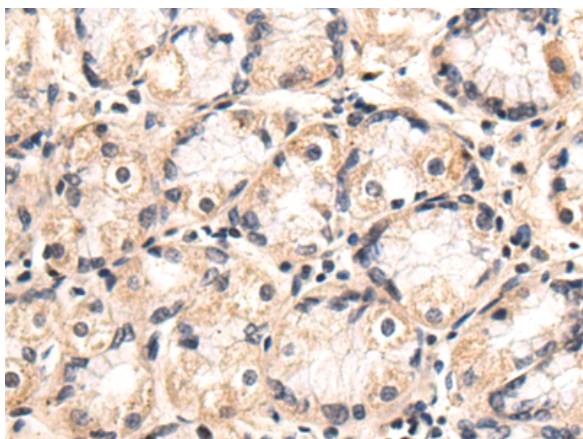
Storage & Shipping: Store at -20°C. Avoid repeated freezing and thawing



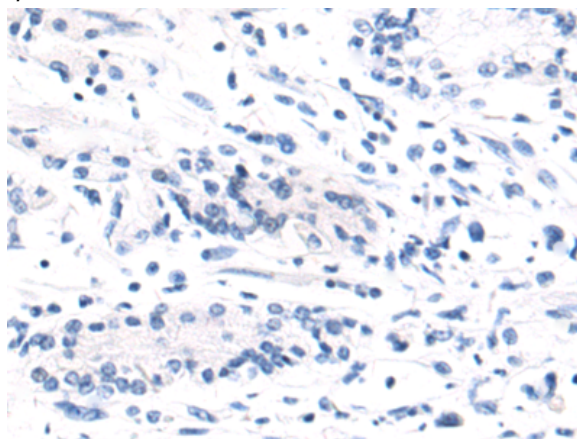
Immunohistochemistry analysis of paraffin embedded Human liver cancer tissue using 220918(SLC16A11 Antibody) at a dilution of 1/50(Cytoplasm).



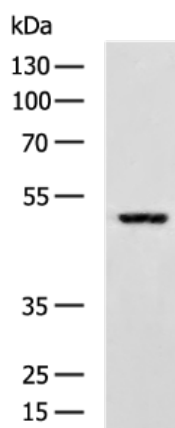
In comparison with the IHC on the left, the same paraffin-embedded Human liver cancer tissue is first treated with the synthetic peptide and then with 220918(Anti-SLC16A11 Antibody) at dilution 1/50.



The image on the left is immunohistochemistry of paraffin-embedded Human gastric cancer tissue using 220918(Anti-SLC16A11 Antibody) at a dilution of 1/50.



In comparison with the IHC on the left, the same paraffin-embedded Human gastric cancer tissue is first treated with synthetic peptide and then with D262216(Anti-SLC16A11 Antibody) at dilution 1/50.



Gel: 12%SDS-PAGE, Lysate: 40 μ g;
Lane: Mouse kidney tissue lysate;
Primary antibody: 220918(SLC16A11 Antibody) at dilution 1/1200;
Secondary antibody: HRP-conjugated Goat anti rabbit IgG at 1/5000 dilution;
Exposure time: 5 seconds



Product Description

Pioneering GTPase and Oncogene Product Development since 2010
