

SLC16A1 RABBIT PAB

Cat.#: S219907

Product Name: Anti-SLC16A1 Rabbit Polyclonal Antibody

Synonyms: MCT; HHF7; MCT1; MCT1D

UNIPROT ID: P53985 (Gene Accession - NP_001159968)

Background: The protein encoded by this gene is a proton-linked monocarboxylate transporter that catalyzes the movement of many monocarboxylates, such as lactate and pyruvate, across the plasma membrane. Mutations in this gene are associated with erythrocyte lactate transporter defect. Alternatively spliced transcript variants have been found for this gene.[provided by RefSeq, Oct 2009]

Immunogen: Synthetic peptide of human SLC16A1

Applications: ELISA, IHC

Recommended Dilutions: IHC: 50-100; ELISA: 5000-10000

Host Species: Rabbit

Clonality: Rabbit Polyclonal

Isotype: Immunogen-specific rabbit IgG

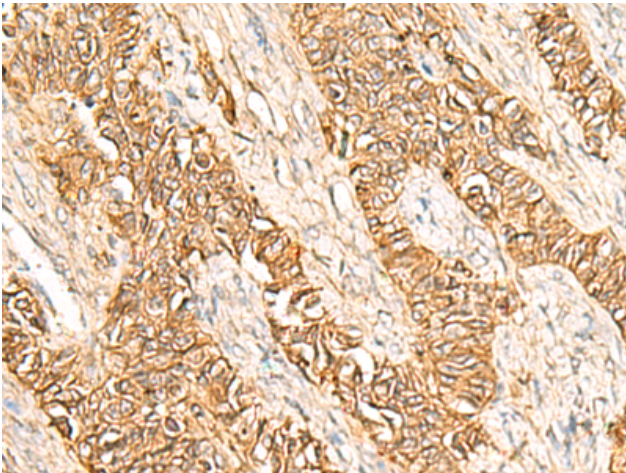
Purification: Antigen affinity purification

Species Reactivity: Human

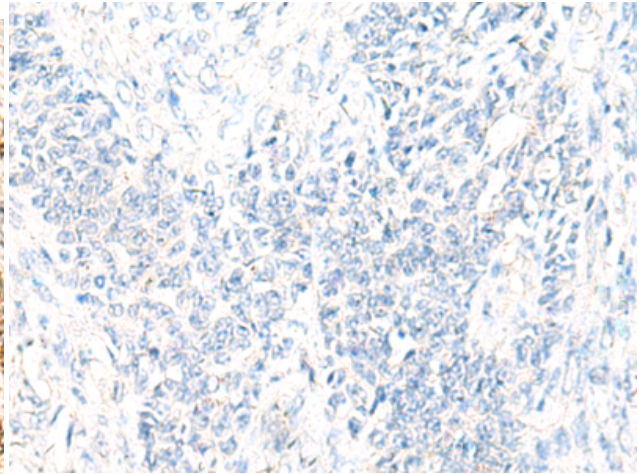
Constituents: PBS (without Mg²⁺ and Ca²⁺), pH 7.4, 150 mM NaCl, 0.05% Sodium Azide and 40% glycerol

Research Areas: Metabolism, Cancer

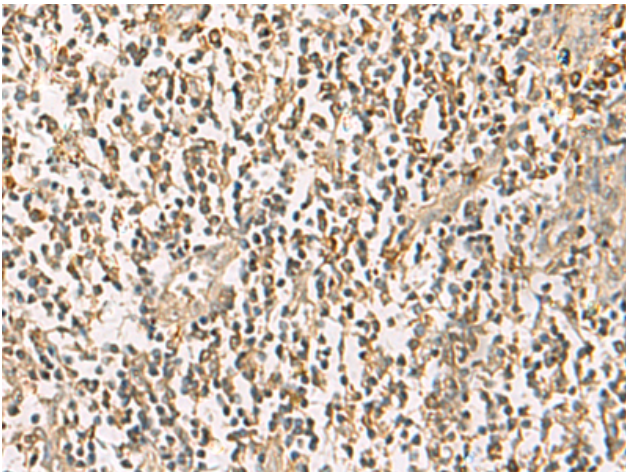
Storage & Shipping: Store at -20°C. Avoid repeated freezing and thawing



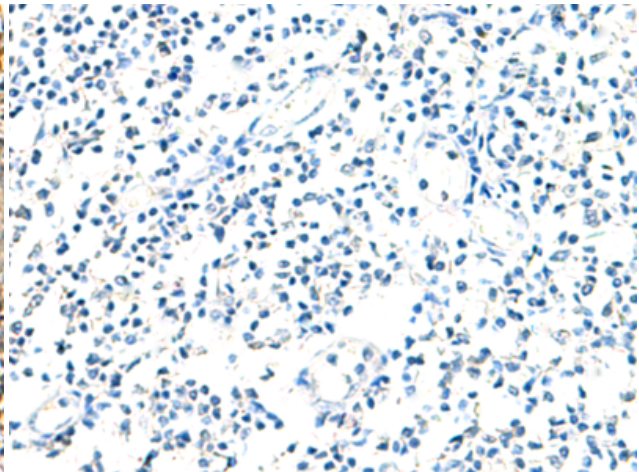
Immunohistochemistry analysis of paraffin embedded Human ovarian cancer tissue using 219907(SLC16A1 Antibody) at a dilution of 1/40(Cell membrane and Cytoplasm).



In comparison with the IHC on the left, the same paraffin-embedded Human ovarian cancer tissue is first treated with the synthetic peptide and then with 219907(Anti-SLC16A1 Antibody) at dilution 1/40.



The image on the left is immunohistochemistry of paraffin-embedded Human tonsil tissue using 219907(Anti-SLC16A1 Antibody) at a dilution of 1/40.



In comparison with the IHC on the left, the same paraffin-embedded Human tonsil tissue is first treated with synthetic peptide and then with D260593(Anti-SLC16A1 Antibody) at dilution 1/40.