

SLC12A7 RABBIT PAB

Cat.#: S222278

Product Name: Anti-SLC12A7 Rabbit Polyclonal Antibody

Synonyms: KCC4

UNIPROT ID: Q9Y666 (Gene Accession - NP_006589)

Background: Mediates electroneutral potassium-chloride cotransport when activated by cell swelling. May mediate K⁺ uptake into Deiters' cells in the cochlea and contribute to K⁺ recycling in the inner ear. Important for the survival of cochlear outer and inner hair cells and the maintenance of the organ of Corti. May be required for basolateral Cl⁻ extrusion in the kidney and contribute to renal acidification (By similarity).

Immunogen: Synthetic peptide of human SLC12A7

Applications: ELISA, IHC

Recommended Dilutions: IHC: 25-100; ELISA: 5000-10000

Host Species: Rabbit

Clonality: Rabbit Polyclonal

Isotype: Immunogen-specific rabbit IgG

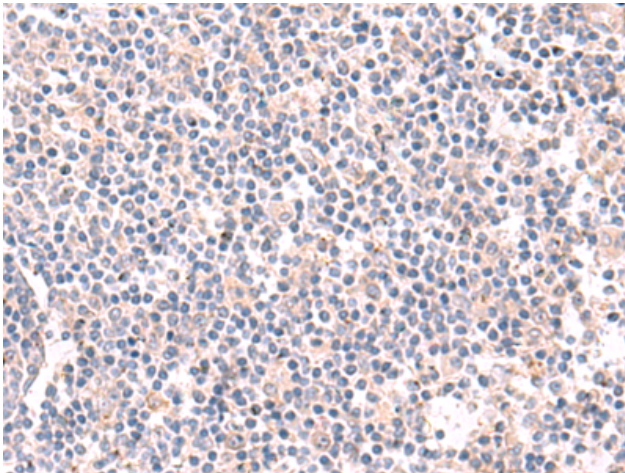
Purification: Antigen affinity purification

Species Reactivity: Human

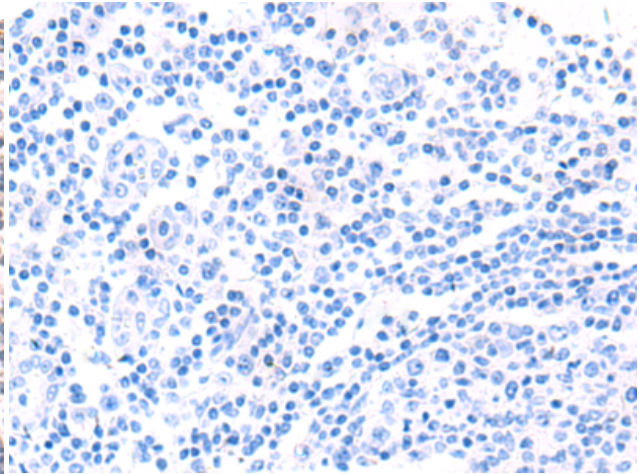
Constituents: PBS (without Mg²⁺ and Ca²⁺), pH 7.4, 150 mM NaCl, 0.05% Sodium Azide and 40% glycerol

Research Areas: Neuroscience

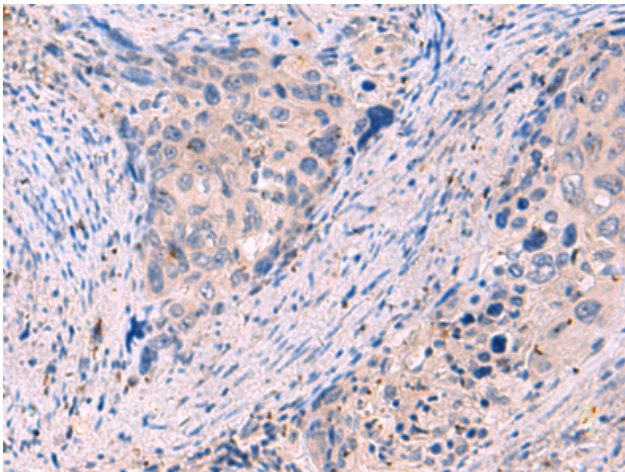
Storage & Shipping: Store at -20°C. Avoid repeated freezing and thawing



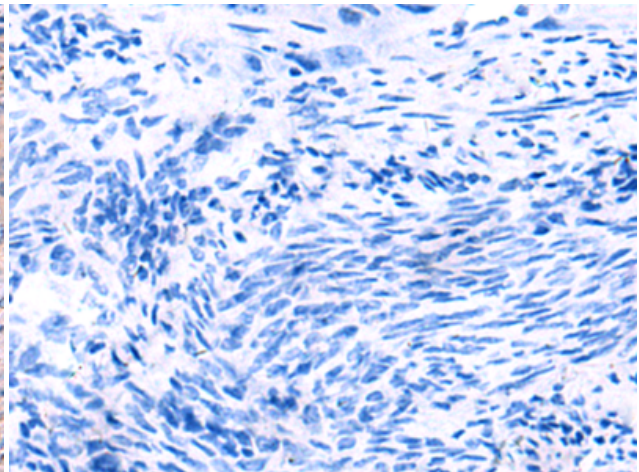
Immunohistochemistry analysis of paraffin embedded Human tonsil tissue using 222278(SLC12A7 Antibody) at a dilution of 1/35(Cytoplasm).



In comparison with the IHC on the left, the same paraffin-embedded Human tonsil tissue is first treated with the synthetic peptide and then with 222278(Anti-SLC12A7 Antibody) at dilution 1/35.



The image on the left is immunohistochemistry of paraffin-embedded Human cervical cancer tissue using 222278(Anti-SLC12A7 Antibody) at a dilution of 1/35.



In comparison with the IHC on the left, the same paraffin-embedded Human cervical cancer tissue is first treated with synthetic peptide and then with D264322(Anti-SLC12A7 Antibody) at dilution 1/35.