

## SLC10A1 RABBIT PAB

**Cat.#:** S213697

**Product Name:** Anti-SLC10A1 Rabbit Polyclonal Antibody

**Synonyms:** NTCP

**UNIPROT ID:** Q14973 (Gene Accession - NP\_003040 )

**Background:** The protein encoded by this gene belongs to the sodium/bile acid cotransporter family, which are integral membrane glycoproteins that participate in the enterohepatic circulation of bile acids. Two homologous transporters are involved in the reabsorption of bile acids; the ileal sodium/bile acid cotransporter with an apical cell localization that absorbs bile acids from the intestinal lumen, bile duct and kidney, and the liver-specific sodium/bile acid cotransporter, represented by this protein, that is found in the basolateral membranes of hepatocytes. Bile acids are the catabolic product of cholesterol metabolism, hence this protein is important for cholesterol homeostasis.

**Immunogen:** Synthetic peptide of human SLC10A1

**Applications:** ELISA, IHC

**Recommended Dilutions:** IHC: 15–50; ELISA: 1000–2000

**Host Species:** Rabbit

**Clonality:** Rabbit Polyclonal

**Isotype:** Immunogen-specific rabbit IgG

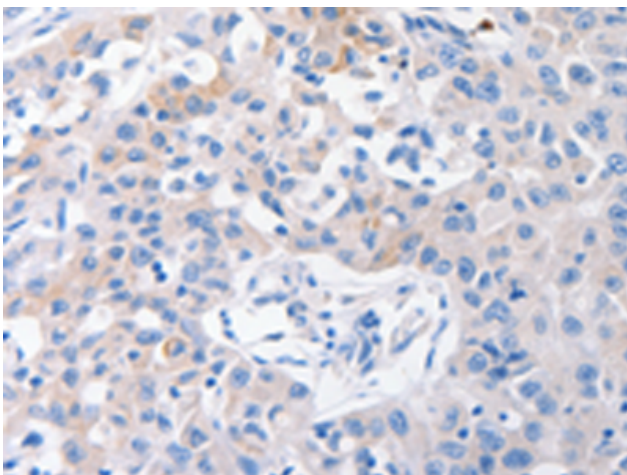
**Purification:** Antigen affinity purification

**Species Reactivity:** Human, Mouse

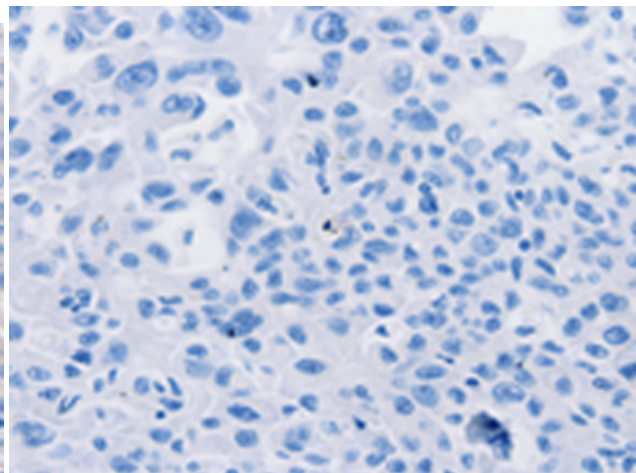
**Constituents:** PBS (without Mg<sup>2+</sup> and Ca<sup>2+</sup>), pH 7.4, 150 mM NaCl, 0.05% Sodium Azide and 40% glycerol

**Research Areas:** Metabolism, Cancer

**Storage & Shipping:** Store at -20°C. Avoid repeated freezing and thawing



Immunohistochemistry analysis of paraffin embedded Human lung cancer tissue using 213697(SLC10A1 Antibody) at a dilution of 1/31(Cytoplasm).



In comparison with the IHC on the left, the same paraffin-embedded Human lung cancer tissue is first treated with the synthetic peptide and then with 213697(Anti-SLC10A1 Antibody) at dilution 1/31.



# Product Description

Pioneering GTPase and Oncogene Product Development since 2010

---