

## SIL1 RABBIT PAB

**Cat.#:** S219473

**Product Name:** Anti-SIL1 Rabbit Polyclonal Antibody

**Synonyms:** BAP; MSS; ULG5

**UNIPROT ID:** Q9HI73 (Gene Accession - BC011568 )

**Background:** This gene encodes a resident endoplasmic reticulum (ER), N-linked glycoprotein with an N-terminal ER targeting sequence, 2 putative N-glycosylation sites, and a C-terminal ER retention signal. This protein functions as a nucleotide exchange factor for another unfolded protein response protein. Mutations in this gene have been associated with Marinesco-Sjogren syndrome. Alternate transcriptional splice variants have been characterized.

**Immunogen:** Fusion protein of human SIL1

**Applications:** ELISA, WB, IHC

**Recommended Dilutions:** IHC: 150-300;WB: 500-2000;ELISA: 5000-10000

**Host Species:** Rabbit

**Clonality:** Rabbit Polyclonal

**Isotype:** Immunogen-specific rabbit IgG

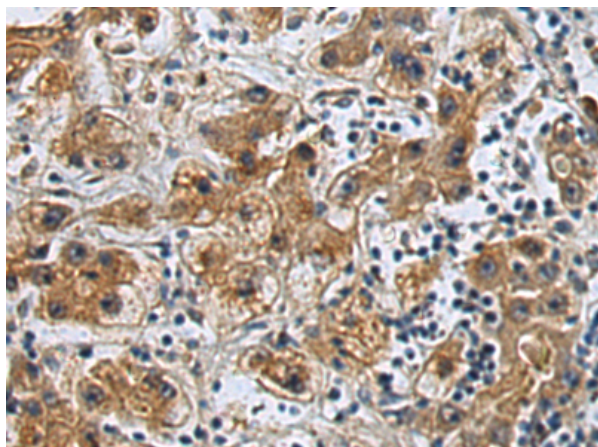
**Purification:** Antigen affinity purification

**Species Reactivity:** Human, Mouse, Rat

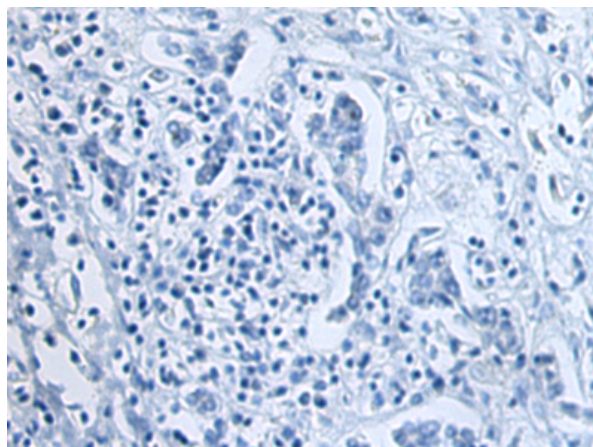
**Constituents:** PBS (without Mg<sup>2+</sup> and Ca<sup>2+</sup>), pH 7.4, 150 mM NaCl, 0.05% Sodium Azide and 40% glycerol

**Research Areas:** Signal Transduction

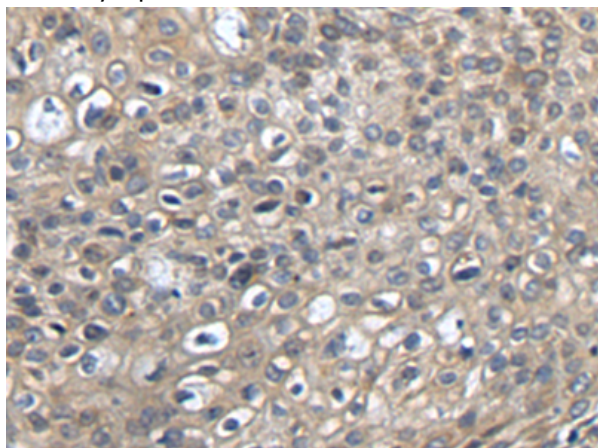
**Storage & Shipping:** Store at -20°C. Avoid repeated freezing and thawing



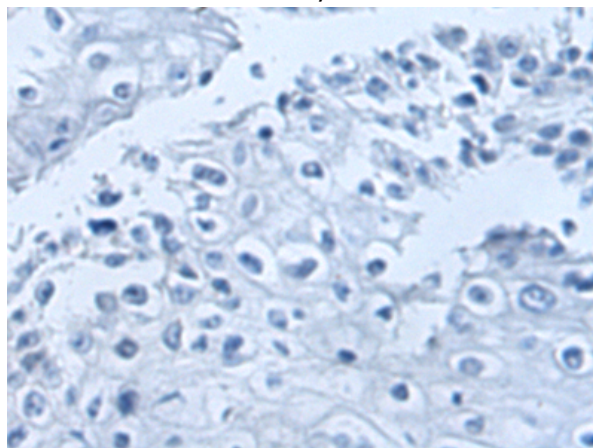
Immunohistochemistry analysis of paraffin embedded Human liver cancer tissue using 219473(SIL1 Antibody) at a dilution of 1/130(Cytoplasm).



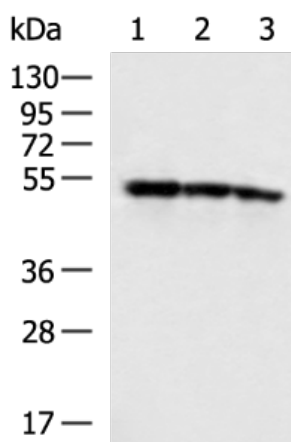
In comparison with the IHC on the left, the same paraffin-embedded Human liver cancer tissue is first treated with the fusion protein and then with 219473(Anti-SIL1 Antibody) at dilution 1/130.



The image on the left is immunohistochemistry of paraffin-embedded Human esophagus cancer tissue using 219473(Anti-SIL1 Antibody) at a dilution of 1/130.



In comparison with the IHC on the left, the same paraffin-embedded Human esophagus cancer tissue is first treated with fusion protein and then with D227290(Anti-SIL1 Antibody) at dilution 1/130.



Gel: 8%SDS-PAGE, Lysate: 40 µg;  
 Lane 1-3: HeLa, K562 and HepG2 cell lysates;  
 Primary antibody: 219473(SIL1 Antibody) at dilution 1/400;  
 Secondary antibody: HRP-conjugated Goat anti rabbit IgG at 1/5000 dilution;  
 Exposure time: 10 seconds



# Product Description

Pioneering GTPase and Oncogene Product Development since 2010

---