

SIK1 RABBIT PAB

Cat.#: S214727

Product Name: Anti-SIK1 Rabbit Polyclonal Antibody

Synonyms: MSK; SIK; SNFILK

UNIPROT ID: P57059 (Gene Accession - NP_775490)

Background: SIK1 (salt-inducible kinase 1), also known as SNFILK or MSK, is a 783 amino acid protein that contains one UBA domain and one protein kinase domain and belongs to the Ser/Thr protein kinase family. Localized to both the nucleus and the cytoplasm, SIK1 uses magnesium as a cofactor to catalyze the ATP-dependent phosphorylation of target proteins and is thought to be important for the early stages of skeletal muscle growth and myocardial cell differentiation. Additionally, SIK1 has a potential role in regulation of the G2/M cell cycle transition, as well as in inhibitory control of CREB protein function.

Immunogen: Synthetic peptide of human SIK1

Applications: ELISA, IHC

Recommended Dilutions: IHC: 25-100; ELISA: 1000-2000

Host Species: Rabbit

Clonality: Rabbit Polyclonal

Isotype: Immunogen-specific rabbit IgG

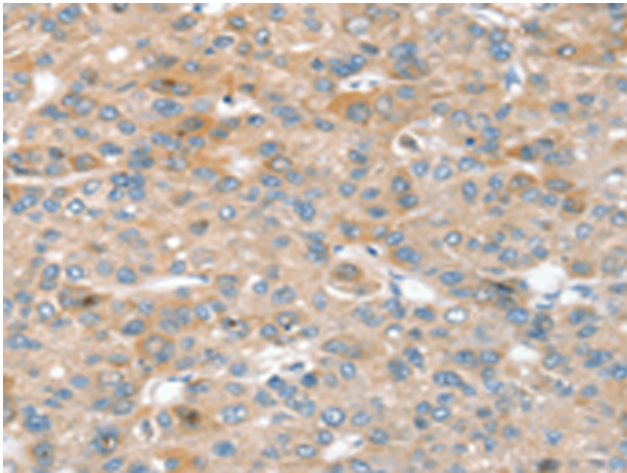
Purification: Antigen affinity purification

Species Reactivity: Human, Mouse, Rat

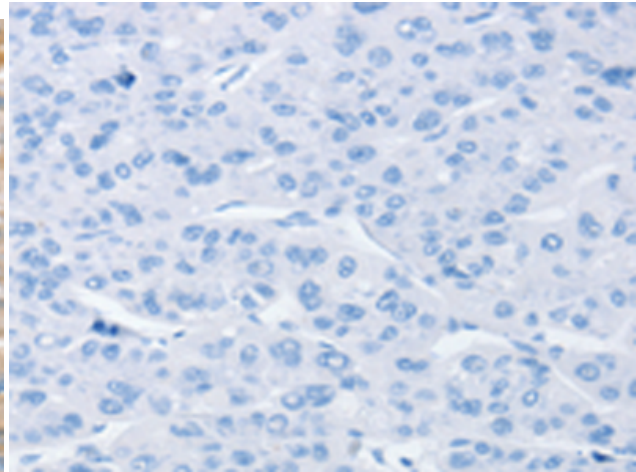
Constituents: PBS (without Mg²⁺ and Ca²⁺), pH 7.4, 150 mM NaCl, 0.05% Sodium Azide and 40% glycerol

Research Areas: Signal Transduction, Epigenetics and Nuclear Signaling, Cancer, Cardiovascular

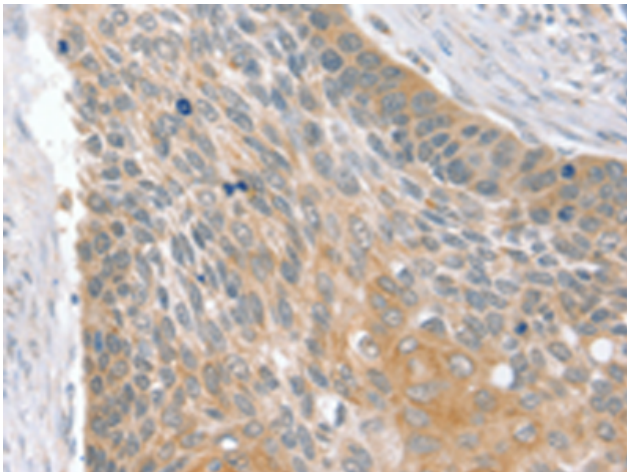
Storage & Shipping: Store at -20°C. Avoid repeated freezing and thawing



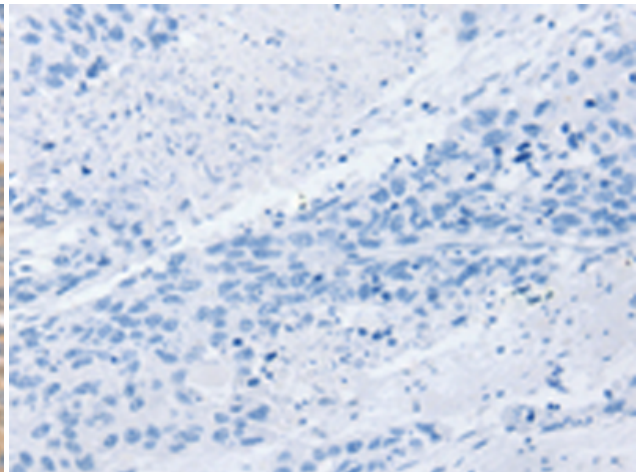
Immunohistochemistry analysis of paraffin-embedded Human liver cancer tissue using 214727(SIK1 Antibody) at a dilution of 1/30(Cytoplasm or Nucleus).



In comparison with the IHC on the left, the same paraffin-embedded Human liver cancer tissue is first treated with the synthetic peptide and then with 214727(Anti-SIK1 Antibody) at dilution 1/30.



The image on the left is immunohistochemistry of paraffin-embedded Human esophagus cancer tissue using 214727(Anti-SIK1 Antibody) at a dilution of 1/30.



In comparison with the IHC on the left, the same paraffin-embedded Human esophagus cancer tissue is first treated with synthetic peptide and then with D162280(Anti-SIK1 Antibody) at dilution 1/30.