

SIGMAR1 RABBIT PAB

Cat.#: S217093

Product Name: Anti-SIGMAR1 Rabbit Polyclonal Antibody

Synonyms: SRBP; ALS16; OPR1; SR-BP; SIG-1R; SR-BP1; sigma1R

UNIPROT ID: Q99720 (Gene Accession - BC004899)

Background: This gene encodes a receptor protein that interacts with a variety of psychotomimetic drugs, including cocaine and amphetamines. The receptor is believed to play an important role in the cellular functions of various tissues associated with the endocrine, immune, and nervous systems. As indicated by its previous name, opioid receptor sigma 1 (OPR1), the product of this gene was erroneously thought to function as an opioid receptor; it is now thought to be a non-opioid receptor. Mutations in this gene has been associated with juvenile amyotrophic lateral sclerosis 16. Alternative splicing of this gene results in transcript variants encoding distinct isoforms.

Immunogen: Fusion protein of human SIGMAR1

Applications: ELISA, WB, IHC

Recommended Dilutions: IHC: 100-300;WB: 500-2000;ELISA: 2000-5000

Host Species: Rabbit

Clonality: Rabbit Polyclonal

Isotype: Immunogen-specific rabbit IgG

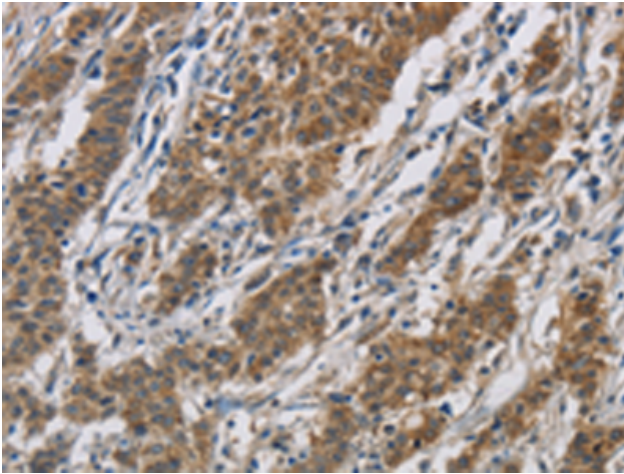
Purification: Antigen affinity purification

Species Reactivity: Human, Mouse, Rat

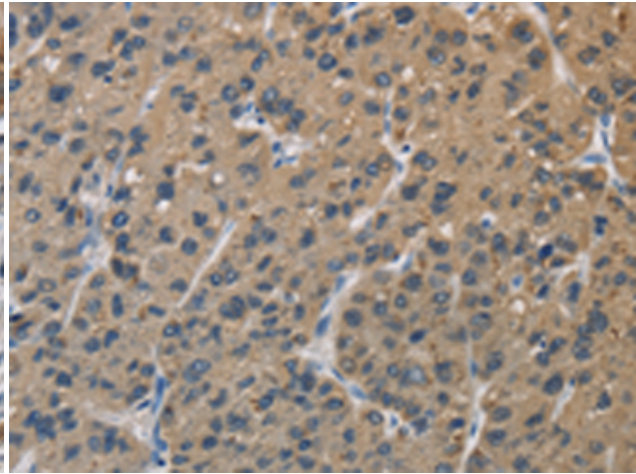
Constituents: PBS (without Mg²⁺ and Ca²⁺), pH 7.4, 150 mM NaCl, 0.05% Sodium Azide and 40% glycerol

Research Areas: Signal Transduction, Cancer, Neuroscience, Cardiovascular

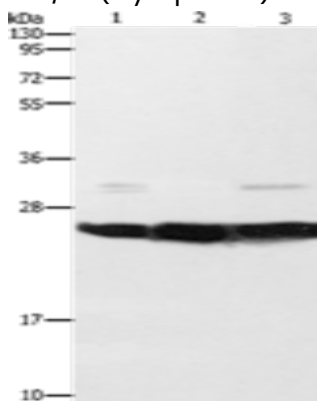
Storage & Shipping: Store at -20°C. Avoid repeated freezing and thawing



Immunohistochemistry analysis of paraffin-embedded Human gastric cancer tissue using 217093(SIGMAR1 Antibody) at a dilution of 1/50(Cytoplasm).



Immunohistochemistry analysis of paraffin-embedded Human liver cancer tissue using 217093(Anti-SIGMAR1 Antibody) at a dilution of 1/50.



Gel: 10%SDS-PAGE, Lysate: 40 µg;
Lane 1-3: Mouse liver tissue, Mouse brain tissue, A549 cells;
Primary antibody: 217093(SIGMAR1 Antibody) at dilution 1/310;
Secondary antibody: Goat anti rabbit IgG at 1/8000 dilution;
Exposure time: 1 second